
Subject: Paris 3.0 on XP Strange Startup
Posted by [Nicolas Jacques](#) on Fri, 15 Jun 2007 00:33:19 GMT
[View Forum Message](#) <> [Reply to Message](#)

Hello All!

Have been running Paris 3.0 on Xp for more than a year now, with not much problems.

I just decided to send this now to have your view on this.

When i startup the Paris Application, the Splash screen appears, and the communication to the MEC starts.

For me a "normal" startup will show the Internal reference light up, then the sample rate, then Master Clip and then Abit24 Clip.

But sometimes, maybe once on 5 attemps, there will be no communication with the MEC.

The light up sequence will not occur. then if i check in my Patchbay window, there are some components missing.

I close up the App and start it up immediatly and it is then ok...

Has it happened to anyone,, any ideas? any driver update?

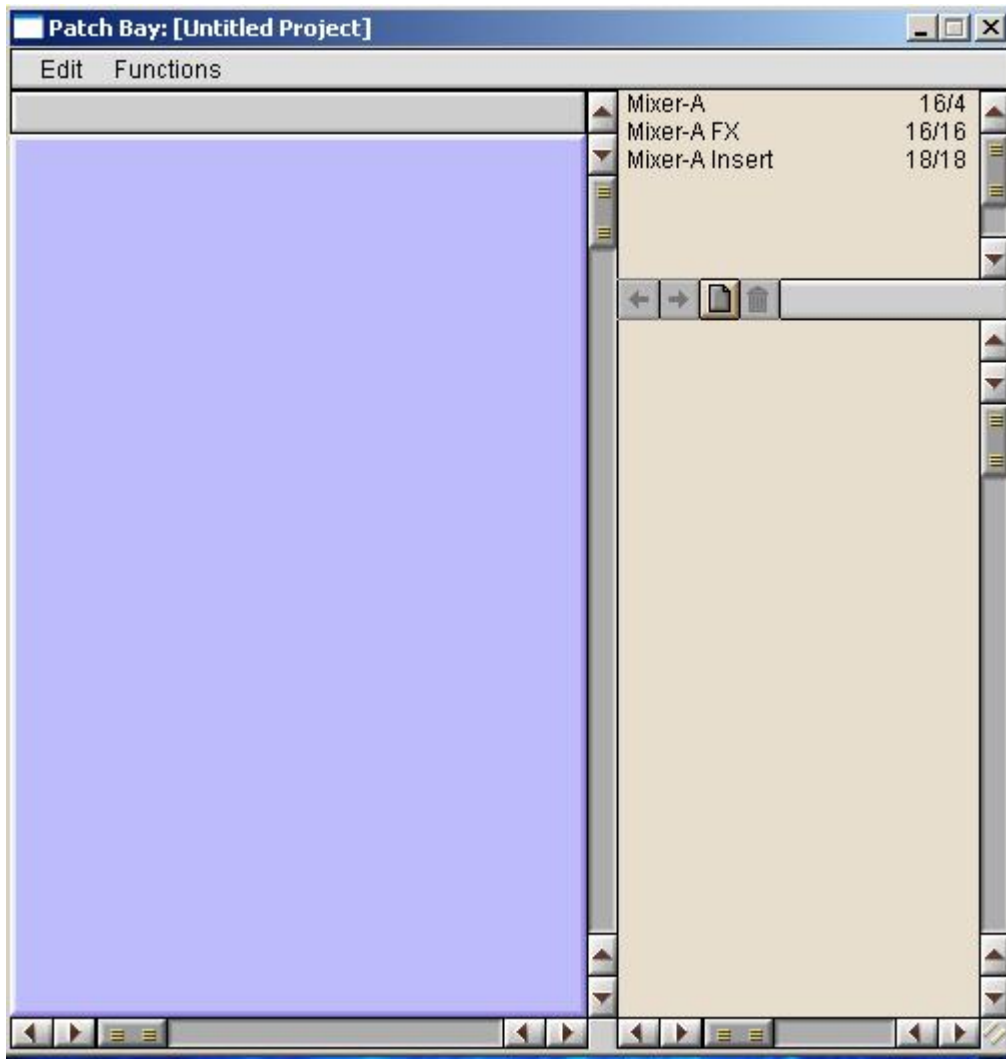
See the provided Attached images just in case

thank you!

NJ

File Attachments

1) [patchbay-missing.JPG](#), downloaded 94 times



2) [INTERFACE-MEC.JPG](#), downloaded 100 times

Sync Source
 internal

SAMPLE RATE
 44.1K
 48K

CLIP
 SIG

EDS - MEC MASTER

CLIP

SIG

CLIP

SIG

CLIP

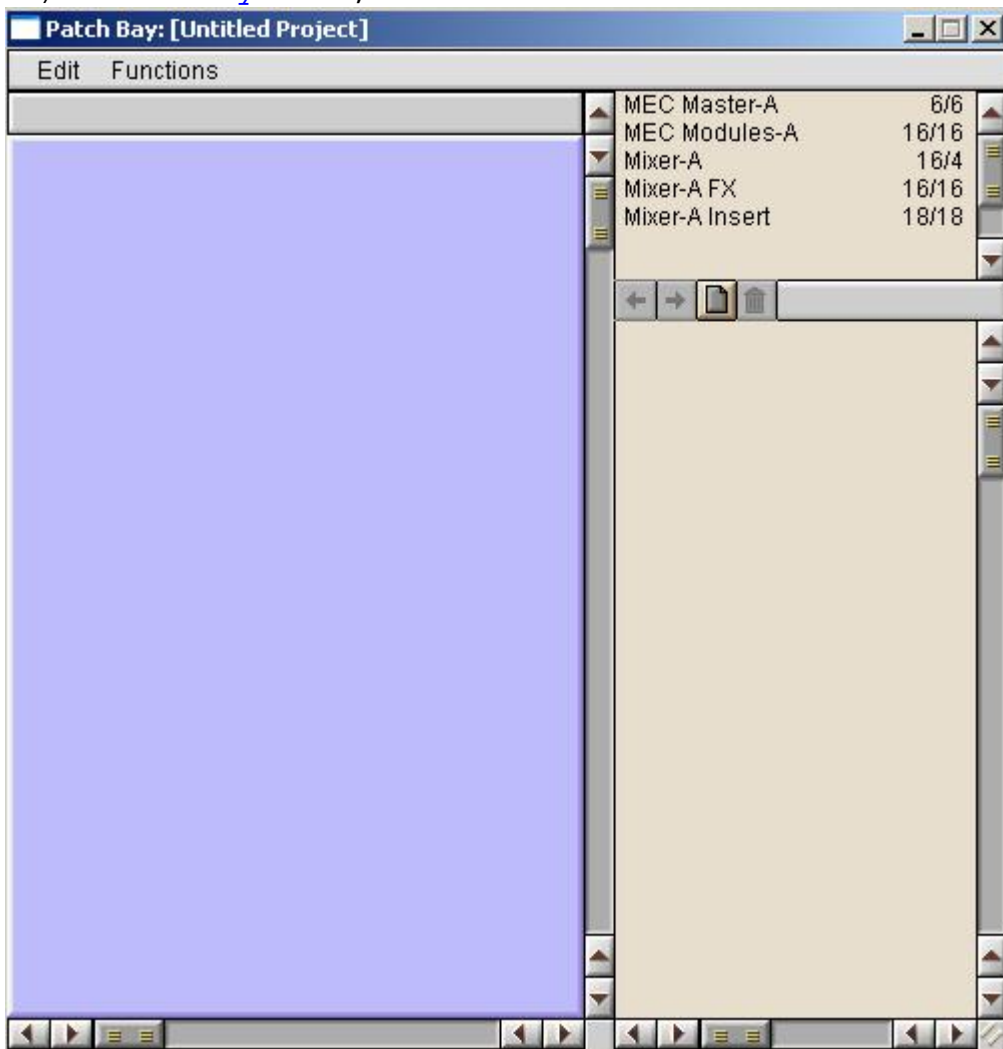
SIG

CLIP

SIG

EDS - ABIT - 24

3) [Patchbay.JPG](#), downloaded 103 times



Subject: Re: Paris 3.0 on XP Strange Startup
Posted by [Ed](#) on Sun, 17 Jun 2007 01:45:51 GMT

[View Forum Message](#) <> [Reply to Message](#)

I'd say, welcome to world of Microsoft Windows XP... Unless it is an issue that can be repeatedly duplicated, nothing can be done. Of course, there could be a hardware that is starting to fail on you. I've had that happen many times... it's almost like XP wants to squeeze every bit of life out of the video card or whatever... ~ Ed

"Nicolas Jacques" <webbit@videotron.ca> wrote in message
news:4671e001@linux...

> Hello All!

>

> Have been running Paris 3.0 on Xp for more than a year now, with not much
> problems.
>
> I just decided to send this now to have your view on this.
>
> When i startup the Paris Application, the Splash screen appears, and the
> communication to the MEC starts.
>
> For me a "normal" startup will show the Internal reference light up, then
> the sample rate, then Master Clip and then Abit24 Clip.
>
> But sometimes, maybe once on 5 attemps, there will be no communication
> with
> the MEC.
>
> The light up sequence will not occur. then if i check in my Patchbay
> window,
> there are some components missing.
>
> I close up the App and start it up immediatly and it is then ok...
>
> Has it happened to anyone,, any ideas? any driver update?
>
> See the provided Attached images just in case
>
> thank you!
>
> NJ
>
>
>
>
>
>
>
