
Subject: PARIS Launch, RESTART, in Windows 10 Issue - Solution

Posted by [Rich.Kelley](#) on Sun, 05 Apr 2020 17:58:45 GMT

[View Forum Message](#) <> [Reply to Message](#)

I, and a couple of others, have reported a problem when using Windows 10 that after the initial boot up of the PC, a RESTART is required in order to get PARIS to launch. This is being discussed in two other threads, but I thought I'd consolidate it here and make the discussion and solution easy to search and find.

I was able to fix the issue by disabling fast startup in power options.

Technical Detail

This is what I think is happening. When you select "Shut down" in the Windows 10, it's default behavior (Fast Startup) is to write a file that saves certain settings so that booting the PC is faster next time. It's a hybrid of a full shutdown, where all system settings are discarded, and hibernate, where the entire system state including all open programs are saved so that you can quickly resume where you left off.

In contrast, when you select "Restart" everything is discarded.

Apparently something is being saved in the Fast Startup file that PARIS doesn't like. This issue was actually causing my entire system to hang on boot up after I installed a video card.

This would also explain a weird behavior that I saw on my system when I was testing it. If I made any change to the number or location of EDS cards in the Magma chassis, I could launch PARIS the first time I booted the PC after the change. However all subsequent boot ups required a RESTART before PARIS would launch. I think that hardware change forced the PC to disregard the Fast Startup file that it had written during the last shut down.

Procedure

I went into Start Menu > Settings > Power & Sleep > Additional power settings (under the Related settings header near the bottom of the window). A Power Options window will open.

In the Power Options window select Choose what the power buttons do that is located on the left side of the window. Another window open that looks like this:

- Select Change settings that are currently unavailable so that you can change the Shutdown settings at the bottom of the window.

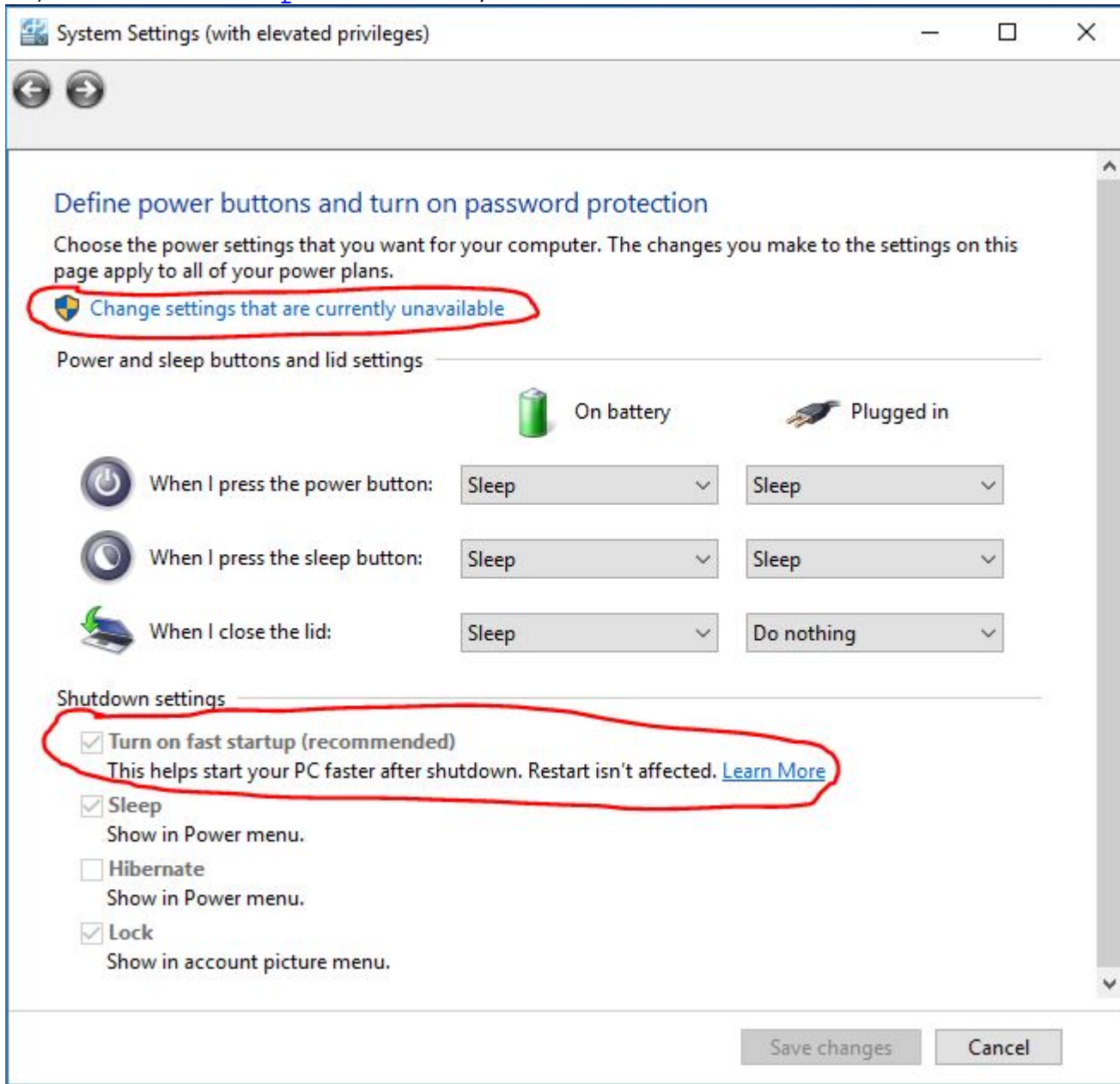
- Then uncheck Turn on fast startup (recommended)

Results

This fixed both the video card hang issue and the PARIS launch issue. Interested to see if others have a similar experience.

File Attachments

1) [Fast Startup Menu.JPG](#), downloaded 3221 times



2) [Power Options Window.JPG](#), downloaded 3222 times



Subject: Re: PARIS Launch, RESTART, in Windows 10 Issue - Solution
Posted by [SummingStrange](#) on Sun, 05 Apr 2020 19:25:56 GMT
[View Forum Message](#) <> [Reply to Message](#)

You're a legend!
I don't know if I will get this issue but if I do, now I'll be able to fix it.

Subject: Re: PARIS Launch, RESTART, in Windows 10 Issue - Solution
Posted by [Ted Gerber](#) on Sun, 05 Apr 2020 22:41:37 GMT
[View Forum Message](#) <> [Reply to Message](#)

Here's an article about Fast Startup with some more context if people would like to read:
<https://www.windowscentral.com/how-disable-windows-10-fast-startup>

With Fast Startup disabled, how fast _does_ your box actually start up now?

Ted

Subject: Re: PARIS Launch, RESTART, in Windows 10 Issue - Solution

Posted by [Rich.Kelley](#) on Mon, 06 Apr 2020 00:21:26 GMT

[View Forum Message](#) <> [Reply to Message](#)

Hey Ted,

25s from button push to ready to launch an app.

The only apps loaded onto this PC right now are PARIS and Adobe Reader. I'm going to load REAPER and a few other things. This PC has never been on the internet and has no virus protection software loaded.

Great article. Thanks.

Subject: Re: PARIS Launch, RESTART, in Windows 10 Issue - Solution

Posted by [Philip](#) on Sat, 12 Sep 2020 17:07:29 GMT

[View Forum Message](#) <> [Reply to Message](#)

I am not having any issue when I power up and start PARIS. I am completely unable to run PARIS after the computer goes to sleep or hibernates. After either of those events, I have to shut down and restart, so with my basic understanding of the quick boot feature and what you are describing, I think you are probably on to something.

-Phil

Subject: Re: PARIS Launch, RESTART, in Windows 10 Issue - Solution

Posted by [Kim W.](#) on Sun, 13 Sep 2020 09:19:40 GMT

[View Forum Message](#) <> [Reply to Message](#)

I'm having this exact problem with Windows 7 64 bit. It only started happening when I switched to SSD drives. The system boots in about 10 seconds, instead of the old 45 seconds or so.

I wonder if the underlying problem is the same??

Thanks for your investigations into this.

One thing that allows me to launch PARIS after first boot, is waiting about a minute before launch.

Weird, but predictable. No biggie.

Cheers,

Kim

Subject: Re: PARIS Launch, RESTART, in Windows 10 Issue - Solution

Posted by [lastlaf51](#) on Sun, 13 Sep 2020 23:36:19 GMT

[View Forum Message](#) <> [Reply to Message](#)

Yes, that fixed the problem here...the pc is ready to rock about 22 seconds after hitting the power switch... Both Paris and Reaper load quickly without issue. Nice!!
