
Subject: Updates on computer setup.

Posted by [Tom Bruhl](#) on Wed, 10 Dec 2008 04:45:08 GMT

[View Forum Message](#) <> [Reply to Message](#)

I hope this graphic is legible. This is where I am in the IRQ department. 16 is the only one sharing but sharing heavily. I chose this though because Deej says this new system is very forgiving and I want 18 for the Creamware card.

The only other choice I had was 19 which shares with the SATA RAID controller.

I figured that would be a bad place to start bottle necking.

Speaking of which have you seen these:

<http://www.tigerdirect.com/applications/SearchTools/item-details.asp?EdpNo=4177125&CatId=139>

I've seen them for less but whoa there's some throughput.

The new comps are really alot faster is so many ways.

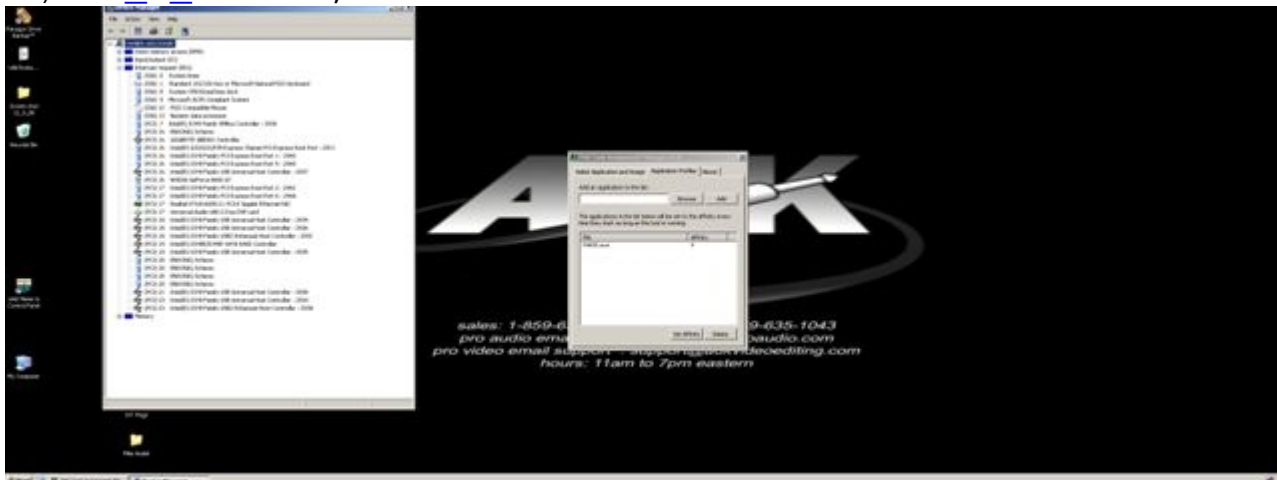
My comp is running with a FSB 1333. Lordy Mama.

Time to clone.

Tom

File Attachments

1) [12_9_08.JPG](#), downloaded 117 times



Subject: Re: Updates on computer setup.

Posted by [Tom Bruhl](#) on Wed, 10 Dec 2008 04:50:02 GMT

Guess you won't be able to read that!
4 cards are on IRQ 20. That's the good news.
I didn't want to send a 7mb pic.

By the way I was wrong about the slots that were sharing IRQ 20.

In my box they were 1, 5, 8 & 12. Flat cable 13 slot Magma.

T.

"Tom Bruhl" <arpeggio@comcast.net> wrote in message news:493f4d51@linux...

> I hope this graphic is legible. This is where I am in the IRQ department.

> 16 is the only one sharing but sharing heavily. I chose this though

> because

> DeeJ says this new system is very forgiving and I want 18 for the

> Creamware card.

> The only other choice I had was 19 which shares with the SATA RAID

> controller.

> I figured that would be a bad place to start bottle necking.

>

> Speaking of which have you seen these:

> <http://www.tigerdirect.com/applications/SearchTools/item-details.asp?EdpNo=4177125&CatId=139>

>

> I've seen them for less but whoa there's some throughput.

>

> The new comps are really alot faster is so many ways.

> My comp is running with a FSB 1333. Lordy Mama.

>

> Time to clone.

>

> Tom

>

>

>

Subject: Re: Updates on computer setup.

Posted by [Tom Bruhl](#) on Wed, 10 Dec 2008 07:18:27 GMT

[View Forum Message](#) <> [Reply to Message](#)

Ran a little audio for the first time. CPU was at
0-3% throughout.

I'll start loading in some plugins and see what happens.

"Tom Bruhl" <arpeggio@comcast.net> wrote in message news:493f4e74\$1@linux...

> Guess you won't be able to read that!

> 4 cards are on IRQ 20. That's the good news.

> I didn't want to send a 7mb pic.

>

> By the way I was wrong about the slots that were sharing IRQ 20.

>

> In my box they were 1, 5, 8 & 12. Flat cable 13 slot Magma.

>

> T.

>

>

>

> "Tom Bruhl" <arpeggio@comcast.net> wrote in message news:493f4d51@linux...

>> I hope this graphic is legible. This is where I am in the IRQ

>> department.

>> 16 is the only one sharing but sharing heavily. I chose this though

>> because

>> DeeJ says this new system is very forgiving and I want 18 for the

>> Creamware card.

>> The only other choice I had was 19 which shares with the SATA RAID

>> controller.

>> I figured that would be a bad place to start bottle necking.

>>

>> Speaking of which have you seen these:

>> <http://www.tigerdirect.com/applications/SearchTools/item-details.asp?EdpNo=4177125&CatId=139>

>>

>> I've seen them for less but whoa there's some throughput.

>>

>> The new comps are really alot faster is so many ways.

>> My comp is running with a FSB 1333. Lordy Mama.

>>

>> Time to clone.

>>

>> Tom

>>

>>

>>

>

>

Subject: Re: Updates on computer setup.
Posted by [kerryg](#) on Wed, 10 Dec 2008 07:22:41 GMT
[View Forum Message](#) <> [Reply to Message](#)

WoooHOO! Watching this with great interest.

- K

On 12/9/08 11:18 PM, in article 493f713c@linux, "Tom Bruhl"
<arpegio@comcast.net> wrote:

> Ran a little audio for the first time. CPU was at
> 0-3% throughout.
>
> I'll start loading in some plugins and see what happens.

Subject: Re: Updates on computer setup.
Posted by [Tom Bruhl](#) on Tue, 16 Dec 2008 18:19:07 GMT
[View Forum Message](#) <> [Reply to Message](#)

Okay, Chris L and Mikes technique got the quad core
working with Paris and C-16s. This is not using Mike's new drivers yet.
Went all night in loop mode with the C-16s showing up after 12 hours.

You may have noticed the Macro Express thread. I can't tell you
how much time that program saves me while working with Paris.
If you're not using it you should be. I developed the macros to
work on my rig. Not sure everyone else's will work perfectly.

Today I plan to get external word clock, three mecs and a 442 working.
Once that's stable I will install the Creamware Pro card then Cubase 4.
Backing up before each new step of course!

Tom

"Kerry Galloway" <kg@kerrygalloway.com> wrote in message
news:C564AE41.C04C%kg@kerrygalloway.com...

> WoooHOO! Watching this with great interest.

>

> - K

>

> On 12/9/08 11:18 PM, in article 493f713c@linux, "Tom Bruhl"

> <arpegio@comcast.net> wrote:

>

>> Ran a little audio for the first time. CPU was at

>> 0-3% throughout.

>>
>> I'll start loading in some plugins and see what happens.
>

Subject: Re: Updates on computer setup.
Posted by [Tom Bruhl](#) on Sat, 20 Dec 2008 19:47:49 GMT
[View Forum Message](#) <> [Reply to Message](#)

External clock brings no joy. I will report back after
Mike's drivers are implemented.

"Tom Bruhl" <arpegio@comcast.net> wrote in message news:4947f4ab\$1@linux...

> Okay, Chris L and Mikes technique got the quad core
> working with Paris and C-16s. This is not using Mike's new drivers yet.
> Went all night in loop mode with the C-16s showing up after 12 hours.
>
> You may have noticed the Macro Express thread. I can't tell you
> how much time that program saves me while working with Paris.
> If you're not using it you should be. I developed the macros to
> work on my rig. Not sure everyone else's will work perfectly.
>
> Today I plan to get external word clock, three mecs and a 442 working.
> Once that's stable I will install the Creamware Pro card then Cubase 4.
> Backing up before each new step of course!

>
> Tom

>
>
> "Kerry Galloway" <kg@kerrygalloway.com> wrote in message
> news:C564AE41.C04C%kg@kerrygalloway.com...
>> WoooHOO! Watching this with great interest.

>>
>> - K

>>
>> On 12/9/08 11:18 PM, in article 493f713c@linux, "Tom Bruhl"
>> <arpegio@comcast.net> wrote:

>>
>>> Ran a little audio for the first time. CPU was at
>>> 0-3% throughout.

>>>
>>> I'll start loading in some plugins and see what happens.

>>
>
>

Subject: Re: Updates on computer setup.
Posted by [Tom Bruhl](#) on Sun, 21 Dec 2008 00:03:37 GMT
[View Forum Message](#) <> [Reply to Message](#)

Hi Rod,

Ya, UseHouseSync=1 still no go. Tom's Hardware fix for the C-16, int affinity tool too.

I'm having trouble seeing all the mecs and the one 442. They show in the master position only. Even with internal sync. I've tried wc cables in series (used to work for me) and parallel.

Mecs attached to first card-last card, first card-second card. Nothing, just the master mec. Swapped cables, eds cards mecs and every thing works except extra mecs.

I am trying Mikes drivers tonight.

This is the same thing that was happening when I started smoking mecs with a bad scsi2 cable. That was /is reason enough for me to drop Paris.

I'll get it going one way or another.

Tom

"Rod Lincoln" <rlincoln@nospam.kc.rr.com> wrote in message news:494d7dd2\$1@linux...

>

> Did you remember to add "Usehousesync" to the config file?

> Rod

> "Tom Bruhl" <arpegio@comcast.net> wrote:

>> External clock brings no joy. I will report back after

>> Mike's drivers are implemented.

>>

>>

>> "Tom Bruhl" <arpegio@comcast.net> wrote in message

>> news:4947f4ab\$1@linux...

>>> Okay, Chris L and Mikes technique got the quad core

>>> working with Paris and C-16s. This is not using Mike's new drivers yet.

>>> Went all night in loop mode with the C-16s showing up after 12 hours.

>>>

>>> You may have noticed the Macro Express thread. I can't tell you

>>> how much time that program saves me while working with Paris.

>>> If you're not using it you should be. I developed the macros to

>>> work on my rig. Not sure everyone else's will work perfectly.
>>>
>>> Today I plan to get external word clock, three mecs and a 442 working.
>>> Once that's stable I will install the Creamware Pro card then Cubase 4.
>>> Backing up before each new step of course!
>>>
>>> Tom
>>>
>>>
>>> "Kerry Galloway" <kg@kerrygalloway.com> wrote in message
>>> news:C564AE41.C04C%kg@kerrygalloway.com...
>>>> WoooHOO! Watching this with great interest.
>>>>
>>>> - K
>>>>
>>>> On 12/9/08 11:18 PM, in article 493f713c@linux, "Tom Bruhl"
>>>> <arpeggio@comcast.net> wrote:
>>>>
>>>>> Ran a little audio for the first time. CPU was at
>>>>> 0-3% throughout.
>>>>>
>>>>> I'll start loading in some plugins and see what happens.
>>>>>
>>>
>>>
>>
>>
>

Subject: Re: Updates on computer setup.
Posted by [Rod Lincoln](#) on Sun, 21 Dec 2008 00:20:50 GMT
[View Forum Message](#) <> [Reply to Message](#)

Did you remember to add "Usehousesync" to the config file?
Rod
"Tom Bruhl" <arpeggio@comcast.net> wrote:
>External clock brings no joy. I will report back after
>Mike's drivers are implemented.
>
>
>"Tom Bruhl" <arpeggio@comcast.net> wrote in message news:4947f4ab\$1@linux...
>> Okay, Chris L and Mikes technique got the quad core
>> working with Paris and C-16s. This is not using Mike's new drivers yet.
>> Went all night in loop mode with the C-16s showing up after 12 hours.
>>
>> You may have noticed the Macro Express thread. I can't tell you
>> how much time that program saves me while working with Paris.

>> If you're not using it you should be. I developed the macros to
>> work on my rig. Not sure everyone else's will work perfectly.
>>
>> Today I plan to get external word clock, three mecs and a 442 working.
>> Once that's stable I will install the Creamware Pro card then Cubase 4.
>> Backing up before each new step of course!
>>
>> Tom
>>
>>
>> "Kerry Galloway" <kg@kerrygalloway.com> wrote in message
>> news:C564AE41.C04C%kg@kerrygalloway.com...
>>> WoooHOO! Watching this with great interest.
>>>
>>> - K
>>>
>>> On 12/9/08 11:18 PM, in article 493f713c@linux, "Tom Bruhl"
>>> <arpeggio@comcast.net> wrote:
>>>
>>>> Ran a little audio for the first time. CPU was at
>>>> 0-3% throughout.
>>>>
>>>> I'll start loading in some plugins and see what happens.
>>>
>>
>>
>
>

Subject: Re: Updates on computer setup.
Posted by [Tom Bruhl](#) on Sun, 21 Dec 2008 23:32:11 GMT
[View Forum Message](#) <> [Reply to Message](#)

Mike Audet has come to the rescue and made my quad core run very well with internal clock and two Mecs. Later tonight I will try the Lucid one more time and add a 442 into the mix.

I will report as soon as I know. Mikes newest PSCL ver1.01 and Scherzo drivers are a must to make this setup work. No other work arounds are needed anymore.

Tom

"Tom Bruhl" <arpeggio@comcast.net> wrote in message news:494d8bf3\$1@linux...
> Hi Rod,
>

> Ya, UseHouseSync=1 still no go. Tom's Hardware fix
> for the C-16, int affinity tool too.
>
> I'm having trouble seeing all the mecs and the one 442.
> They show in the master position only. Even with
> internal sync. I've tried wc cables in series (used to work for me)
> and parallel.
> Meocs attached to first card-last card, first card-second card.
> Nothing, just the master mec. Swapped cables, eds cards
> meocs and every thing works except extra meocs.
>
> I am trying Mikes drivers tonight.
>
> This is the same thing that was happening when I started
> smoking meocs with a bad scsi2 cable. That was /is reason enough
> for me to drop Paris.
>
> I'll get it going one way or another.
>
> Tom
>
>
>
>
> "Rod Lincoln" <rlincoln@nospam.kc.rr.com> wrote in message
> news:494d7dd2\$1@linux...
>>
>> Did you remember to add "Usehousesync" to the config file?
>> Rod
>> "Tom Bruhl" <arpegio@comcast.net> wrote:
>>> External clock brings no joy. I will report back after
>>> Mike's drivers are implemented.
>>>
>>>
>>> "Tom Bruhl" <arpegio@comcast.net> wrote in message
>>> news:4947f4ab\$1@linux...
>>>> Okay, Chris L and Mikes technique got the quad core
>>>> working with Paris and C-16s. This is not using Mike's new drivers
>>>> yet.
>>>> Went all night in loop mode with the C-16s showing up after 12 hours.
>>>>
>>>> You may have noticed the Macro Express thread. I can't tell you
>>>> how much time that program saves me while working with Paris.
>>>> If you're not using it you should be. I developed the macros to
>>>> work on my rig. Not sure everyone else's will work perfectly.
>>>>
>>>> Today I plan to get external word clock, three meocs and a 442 working.
>>>> Once that's stable I will install the Creamware Pro card then Cubase 4.

>>>> Backing up before each new step of course!
>>>>
>>>> Tom
>>>>
>>>>
>>>> "Kerry Galloway" <kg@kerrygalloway.com> wrote in message
>>>> news:C564AE41.C04C%kg@kerrygalloway.com...
>>>>> WoooHOO! Watching this with great interest.
>>>>>
>>>>> - K
>>>>>
>>>>> On 12/9/08 11:18 PM, in article 493f713c@linux, "Tom Bruhl"
>>>>> <arpeggio@comcast.net> wrote:
>>>>>
>>>>>> Ran a little audio for the first time. CPU was at
>>>>>> 0-3% throughout.
>>>>>>
>>>>>> I'll start loading in some plugins and see what happens.
>>>>>>
>>>>>
>>>>
>>>>
>>>>
>>>
>>>
>>
>
>

Subject: Re: Updates on computer setup.
Posted by [Aaron Allen](#) on Mon, 22 Dec 2008 04:57:36 GMT
[View Forum Message](#) <> [Reply to Message](#)

Are you using multiple Adat cards with the adat updated drivers, per chance?
AA

"Tom Bruhl" <arpeggio@comcast.net> wrote in message news:494ed5a4@linux...
> Mike Audet has come to the rescue and made my quad core run
> very well with internal clock and two Mecs. Later tonight I will
> try the Lucid one more time and add a 442 into the mix.
>
> I will report as soon as I know. Mikes newest PSCL ver1.01 and
> Scherzo drivers are a must to make this setup work. No other
> work arounds are needed anymore.
>
> Tom
>
>

> "Tom Bruhl" <arpegio@comcast.net> wrote in message
> news:494d8bf3\$1@linux...
>> Hi Rod,
>>
>> Ya, UseHouseSync=1 still no go. Tom's Hardware fix
>> for the C-16, int affinity tool too.
>>
>> I'm having trouble seeing all the mecs and the one 442.
>> They show in the master position only. Even with
>> internal sync. I've tried wc cables in series (used to work for me)
>> and parallel.
>> Mecs attached to first card-last card, first card-second card.
>> Nothing, just the master mec. Swapped cables, eds cards
>> mecs and every thing works except extra mecs.
>>
>> I am trying Mikes drivers tonight.
>>
>> This is the same thing that was happening when I started
>> smoking mecs with a bad scsi2 cable. That was /is reason enough
>> for me to drop Paris.
>>
>> I'll get it going one way or another.
>>
>> Tom
>>
>>
>>
>>
>> "Rod Lincoln" <rlincoln@nospam.kc.rr.com> wrote in message
>> news:494d7dd2\$1@linux...
>>>
>>> Did you remember to add "Usehousesync" to the config file?
>>> Rod
>>> "Tom Bruhl" <arpegio@comcast.net> wrote:
>>>> External clock brings no joy. I will report back after
>>>> Mike's drivers are implemented.
>>>>
>>>>
>>>> "Tom Bruhl" <arpegio@comcast.net> wrote in message
>>>> news:4947f4ab\$1@linux...
>>>>> Okay, Chris L and Mikes technique got the quad core
>>>>> working with Paris and C-16s. This is not using Mike's new drivers
>>>>> yet.
>>>>> Went all night in loop mode with the C-16s showing up after 12 hours.
>>>>>
>>>>> You may have noticed the Macro Express thread. I can't tell you
>>>>> how much time that program saves me while working with Paris.
>>>>> If you're not using it you should be. I developed the macros to

>>>> work on my rig. Not sure everyone else's will work perfectly.
>>>>
>>>> Today I plan to get external word clock, three mecs and a 442 working.
>>>> Once that's stable I will install the Creamware Pro card then Cubase
>>>> 4.
>>>> Backing up before each new step of course!
>>>>
>>>> Tom
>>>>
>>>>
>>>> "Kerry Galloway" <kg@kerrygalloway.com> wrote in message
>>>> news:C564AE41.C04C%kg@kerrygalloway.com...
>>>>> WoooHOO! Watching this with great interest.
>>>>>
>>>>> - K
>>>>>
>>>>> On 12/9/08 11:18 PM, in article 493f713c@linux, "Tom Bruhl"
>>>>> <arpeggio@comcast.net> wrote:
>>>>>
>>>>>> Ran a little audio for the first time. CPU was at
>>>>>> 0-3% throughout.
>>>>>>
>>>>>>> I'll start loading in some plugins and see what happens.
>>>>>>
>>>>>
>>>>>
>>>>
>>>>
>>>
>>
>>
>
>

Subject: Re: Updates on computer setup.
Posted by [Mike Audet](#) on Mon, 22 Dec 2008 11:47:18 GMT
[View Forum Message](#) <> [Reply to Message](#)

Aaron Allen wrote:
> Are you using multiple Adat cards with the adat updated drivers, per chance?
> AA
>
Hi Aaron,

Have you tried that yet, or are you just considering trying it?

If there are any issues, I want to fix them. :)

All the best,

Mike

Subject: Re: Updates on computer setup.
Posted by [Aaron Allen](#) on Mon, 22 Dec 2008 14:04:27 GMT
[View Forum Message](#) <> [Reply to Message](#)

A new box is in consideration, and maybe a few more adat cards to link up my Creamware setup to it.

AA

"Mike Audet" <mike@mikeaudet.com> wrote in message news:494f81fa\$1@linux...

> Aaron Allen wrote:

>> Are you using multiple Adat cards with the adat updated drivers, per

>> chance?

>> AA

>>

> Hi Aaron,

>

> Have you tried that yet, or are you just considering trying it?

>

> If there are any issues, I want to fix them. :)

>

> All the best,

>

> Mike

Subject: Re: Updates on computer setup.
Posted by [Tom Bruhl](#) on Mon, 22 Dec 2008 15:03:55 GMT
[View Forum Message](#) <> [Reply to Message](#)

I'll slap two adats into MEC 2 and see what happens for you guys.

Tom

"Aaron Allen" <know-spam@not_here.dude> wrote in message news:494fa209@linux...

>A new box is in consideration, and maybe a few more adat cards to link up
>my Creamware setup to it.

>

> AA

>
> "Mike Audet" <mike@mikeaudet.com> wrote in message
> news:494f81fa\$1@linux...
>> Aaron Allen wrote:
>>> Are you using multiple Adat cards with the adat updated drivers, per
>>> chance?
>>> AA
>>>
>> Hi Aaron,
>>
>> Have you tried that yet, or are you just considering trying it?
>>
>> If there are any issues, I want to fix them. :)
>>
>> All the best,
>>
>> Mike
>
>

Subject: Re: Updates on computer setup.
Posted by [Tom Bruhl](#) on Mon, 22 Dec 2008 17:41:09 GMT
[View Forum Message](#) <> [Reply to Message](#)

Two ADATs show up in Mec 2 in a 5 eds card -
two mec setup using a quad core. One ADAT
also was installed in Mec 1 at the time. I can't
confirm ADAT sync at this time but the gui operated
as expected in the patchbay.

I'll need to pick up a creamware sync plate for that test.
I may try the adat machine after all is well here.

Tom

"Tom Bruhl" <arpeggio@comcast.net> wrote in message news:494faffc@linux...
> I'll slap two adats into MEC 2 and see what happens for you guys.
>
> Tom
>
>
> "Aaron Allen" <know-spam@not_here.dude> wrote in message
> news:494fa209@linux...
>>A new box is in consideration, and maybe a few more adat cards to link up
>>my Creamware setup to it.
>>

>> AA
>>
>> "Mike Audet" <mike@mikeaudet.com> wrote in message
>> news:494f81fa\$1@linux...
>>> Aaron Allen wrote:
>>>> Are you using multiple Adat cards with the adat updated drivers, per
>>>> chance?
>>>> AA
>>>>
>>> Hi Aaron,
>>>
>>> Have you tried that yet, or are you just considering trying it?
>>>
>>> If there are any issues, I want to fix them. :)
>>>
>>> All the best,
>>>
>>> Mike
>>
>>
>
>

Subject: Re: Updates on computer setup.
Posted by [Tom Bruhl](#) on Mon, 29 Dec 2008 22:06:01 GMT
[View Forum Message](#) <> [Reply to Message](#)

Well everyone, Mike has saved the day by updating the PSCl for me in particular. I was receiving a new error never seen before. After more than a few tries Mike seems to have nailed it. Again no funny workarounds with XP Pro, 2 mecs, 5 eds, Magma, UAD-2, Quadcore, etc..

I will continue loading plugins then finally add the Creamware card.

1 EDS card is sharing with video, USB controllers and a few other less important things. Not a glitch in operation and the beast is smooth and stable. Config in Paris is 64, 160, 210,000. I know, weird but not an error in sight and that's dragging 10 tracks in time all over the editor and dropping them whereva... while it's playing 24 tracks with edits. The gui is displaying at the sample level on 4 submixes too.

I think you will all like this very very much.

Happy as a lark,
Tom

"Tom Bruhl" <arpegio@comcast.net> wrote in message news:494fd4d4\$1@linux...

> Two ADATs show up in Mec 2 in a 5 eds card -
> two mec setup using a quad core. One ADAT
> also was installed in Mec 1 at the time. I can't
> confirm ADAT sync at this time but the gui operated
> as expected in the patchbay.

>

> I'll need to pick up a creamware sync plate for that test.
> I may try the adat machine after all is well here.

>

> Tom

>

>

> "Tom Bruhl" <arpegio@comcast.net> wrote in message news:494faffc@linux...

>> I'll slap two adats into MEC 2 and see what happens for you guys.

>>

>> Tom

>>

>>

>> "Aaron Allen" <know-spam@not_here.dude> wrote in message
>> news:494fa209@linux...

>>> A new box is in consideration, and maybe a few more adat cards to link up
>>> my Creamware setup to it.

>>>

>>> AA

>>>

>>> "Mike Audet" <mike@mikeaudet.com> wrote in message
>>> news:494f81fa\$1@linux...

>>>> Aaron Allen wrote:

>>>>> Are you using multiple Adat cards with the adat updated drivers, per
>>>>> chance?

>>>>> AA

>>>>>

>>>>> Hi Aaron,

>>>>>

>>>>> Have you tried that yet, or are you just considering trying it?

>>>>>

>>>>> If there are any issues, I want to fix them. :)

>>>>>

>>>>> All the best,

>>>>>

>>>>> Mike

>>>>

>>>>

>>>>

>>>>

>
>

Subject: Re: Updates on computer setup.
Posted by [kerryg](#) on Tue, 30 Dec 2008 02:49:44 GMT
[View Forum Message](#) <> [Reply to Message](#)

Huge news, Tom - congratulations, and thanks for trailblazing for everyone!
I'll be watching the process with extreme interest - my production buddy is all PC and he wants to have a pretty brawny computer in the studio, so this couldn't have come at a better time for me.

Mike, looks like you hit it out of the park.

- K

On 12/29/08 2:06 PM, in article 49594d55@linux, "Tom Bruhl" <arpegio@comcast.net> wrote:

> Well everyone, Mike has saved the day by updating the
> PSCL for me in particular. I was receiving a new error
> never seen before. After more than a few trys Mike seems
> to have nailed it. Again no funny workarounds with XP Pro,
> 2 mecs, 5 eds, Magma, UAD-2, Quadcore, etc..
>
> I will continue loading plugins then finally add the Creamware card.
>
> 1 EDS card is sharing with video, USB controllers and a few other
> less important things. Not a glitch in operation and the beast is smooth
> and stable. Config in Paris is 64, 160, 210,000. I know, weird but
> not an error in sight and that's dragging 10 tracks in time all over the
> editor and dropping them whereva... while it's playing 24 tracks with edits.
> The gui is displaying at the sample level on 4 submixes too.
>
> I think you will all like this very very much.
>
> Happy as a lark,
> Tom
>
>
>
> "Tom Bruhl" <arpegio@comcast.net> wrote in message news:494fd4d4\$1@linux...
>> Two ADATs show up in Mec 2 in a 5 eds card -
>> two mec setup using a quad core. One ADAT
>> also was installed in Mec 1 at the time. I can't
>> confirm ADAT sync at this time but the gui operated

>> as expected in the patchbay.
>>
>> I'll need to pick up a creamware sync plate for that test.
>> I may try the adat machine after all is well here.
>>
>> Tom
>>
>>
>> "Tom Bruhl" <arpegio@comcast.net> wrote in message news:494faffc@linux...
>>> I'll slap two adats into MEC 2 and see what happens for you guys.
>>>
>>> Tom
>>>
>>>
>>> "Aaron Allen" <know-spam@not_here.dude> wrote in message
>>> news:494fa209@linux...
>>>> A new box is in consideration, and maybe a few more adat cards to link up
>>>> my Creamware setup to it.
>>>>
>>>> AA
>>>>
>>>> "Mike Audet" <mike@mikeaudet.com> wrote in message
>>>> news:494f81fa\$1@linux...
>>>>> Aaron Allen wrote:
>>>>>> Are you using multiple Adat cards with the adat updated drivers, per
>>>>>> chance?
>>>>>> AA
>>>>>>
>>>>>> Hi Aaron,
>>>>>>
>>>>>> Have you tried that yet, or are you just considering trying it?
>>>>>>
>>>>>> If there are any issues, I want to fix them. :)
>>>>>>
>>>>>> All the best,
>>>>>>
>>>>>> Mike
>>>>
>>>>
>>>
>>>
>>
>>
>
>

Subject: Re: Updates on computer setup.
Posted by [Tom Bruhl](#) on Tue, 30 Dec 2008 04:04:17 GMT
[View Forum Message](#) <> [Reply to Message](#)

Hi Kerry,

Ya Mike is a major league player regarding Paris that's for sure. I have been installing many plugins and so far with great success. I am about to wrap them and see how they function. Many are DX and work right out of the box. Some of the VSTs do too. The Waves SSL is sweet and didn't show it's quirky display problem that shut the transport down in my old comp. There is a driver update for some video cards because of it.

I am going back at it and will try to make it quit from abuse again only this time with as many SIRs as I can get going as inserts. This should be fun!

I'll post back.
Tom

"Kerry Galloway" <kg@kerrygalloway.com> wrote in message news:C57ECC48.C1AF%kg@kerrygalloway.com...
> Huge news, Tom - congratulations, and thanks for trailblazing for
> everyone!
> I'll be watching the process with extreme interest - my production buddy
> is
> all PC and he wants to have a pretty brawny computer in the studio, so
> this
> couldn't have come at a better time for me.
>
> Mike, looks like you hit it out of the park.
>
> - K
>
>
> On 12/29/08 2:06 PM, in article 49594d55@linux, "Tom Bruhl"
> <arpeggio@comcast.net> wrote:
>
>> Well everyone, Mike has saved the day by updating the
>> PSCL for me in particular. I was receiving a new error
>> never seen before. After more than a few trys Mike seems
>> to have nailed it. Again no funny workarounds with XP Pro,
>> 2 mecs, 5 eds, Magma, UAD-2, Quadcore, etc..
>>
>> I will continue loading plugins then finally add the Creamware card.

>>
>> 1 EDS card is sharing with video, USB controllers and a few other
>> less important things. Not a glitch in operation and the beast is smooth
>> and stable. Config in Paris is 64, 160, 210,000. I know, weird but
>> not an error in sight and that's dragging 10 tracks in time all over the
>> editor and dropping them whereva... while it's playing 24 tracks with
>> edits.
>> The gui is displaying at the sample level on 4 submixes too.
>>
>> I think you will all like this very very much.
>>
>> Happy as a lark,
>> Tom
>>
>>
>>
>> "Tom Bruhl" <arpeggio@comcast.net> wrote in message
>> news:494fd4d4\$1@linux...
>>> Two ADATs show up in Mec 2 in a 5 eds card -
>>> two mec setup using a quad core. One ADAT
>>> also was installed in Mec 1 at the time. I can't
>>> confirm ADAT sync at this time but the gui operated
>>> as expected in the patchbay.
>>>
>>> I'll need to pick up a creamware sync plate for that test.
>>> I may try the adat machine after all is well here.
>>>
>>> Tom
>>>
>>>
>>> "Tom Bruhl" <arpeggio@comcast.net> wrote in message
>>> news:494faffc@linux...
>>>> I'll slap two adats into MEC 2 and see what happens for you guys.
>>>>
>>>> Tom
>>>>
>>>>
>>>> "Aaron Allen" <know-spam@not_here.dude> wrote in message
>>>> news:494fa209@linux...
>>>>> A new box is in consideration, and maybe a few more adat cards to link
>>>>> up
>>>>> my Creamware setup to it.
>>>>>
>>>>> AA
>>>>>
>>>>> "Mike Audet" <mike@mikeaudet.com> wrote in message
>>>>> news:494f81fa\$1@linux...
>>>>>> Aaron Allen wrote:

T.

"Tom Bruhl" <arpeggio@comcast.net> wrote in message news:4959a14a@linux...

> Hi Kerry,

>

> Ya Mike is a major league player regarding Paris that's for sure.

> I have been installing many plugins and

> so far with great success. I am about to wrap them and see

> how they function. Many are DX and work right out of the

> box. Some of the VSTs do too. The Waves SSL is sweet

> and didn't show it's quirky display problem that shut the

> transport down in my old comp. There is a driver update

> for some video cards because of it.

>

> I am going back at it and will try to make it quit from

> abuse again only this time with as many SIRs as I can get

> going as inserts. This should be fun!

>

> I'll post back.

> Tom

>

>

>

> "Kerry Galloway" <kg@kerrygalloway.com> wrote in message

> news:C57ECC48.C1AF%kg@kerrygalloway.com...

>> Huge news, Tom - congratulations, and thanks for trailblazing for

>> everyone!

>> I'll be watching the process with extreme interest - my production buddy

>> is

>> all PC and he wants to have a pretty brawny computer in the studio, so

>> this

>> couldn't have come at a better time for me.

>>

>> Mike, looks like you hit it out of the park.

>>

>> - K

>>

>>

>> On 12/29/08 2:06 PM, in article 49594d55@linux, "Tom Bruhl"

>> <arpeggio@comcast.net> wrote:

>>

>>> Well everyone, Mike has saved the day by updating the

>>> PSCL for me in particular. I was receiving a new error

>>> never seen before. After more than a few tries Mike seems

>>> to have nailed it. Again no funny workarounds with XP Pro,

>>> 2 mecs, 5 eds, Magma, UAD-2, Quadcore, etc..

>>>

>>> I will continue loading plugins then finally add the Creamware card.
>>>
>>> 1 EDS card is sharing with video, USB controllers and a few other
>>> less important things. Not a glitch in operation and the beast is
>>> smooth
>>> and stable. Config in Paris is 64, 160, 210,000. I know, weird but
>>> not an error in sight and that's dragging 10 tracks in time all over the
>>> editor and dropping them whereeva... while it's playing 24 tracks with
>>> edits.
>>> The gui is displaying at the sample level on 4 submixes too.
>>>
>>> I think you will all like this very very much.
>>>
>>> Happy as a lark,
>>> Tom
>>>
>>>
>>>
>>> "Tom Bruhl" <arpegio@comcast.net> wrote in message
>>> news:494fd4d4\$1@linux...
>>>> Two ADATs show up in Mec 2 in a 5 eds card -
>>>> two mec setup using a quad core. One ADAT
>>>> also was installed in Mec 1 at the time. I can't
>>>> confirm ADAT sync at this time but the gui operated
>>>> as expected in the patchbay.
>>>>
>>>> I'll need to pick up a creamware sync plate for that test.
>>>> I may try the adat machine after all is well here.
>>>>
>>>> Tom
>>>>
>>>>
>>>> "Tom Bruhl" <arpegio@comcast.net> wrote in message
>>>> news:494faffc@linux...
>>>>> I'll slap two adats into MEC 2 and see what happens for you guys.
>>>>>
>>>>> Tom
>>>>>
>>>>>
>>>>> "Aaron Allen" <know-spam@not_here.dude> wrote in message
>>>>> news:494fa209@linux...
>>>>>> A new box is in consideration, and maybe a few more adat cards to
>>>>>> link up
>>>>>> my Creamware setup to it.
>>>>>>
>>>>>> AA
>>>>>>
>>>>>> "Mike Audet" <mike@mikeaudet.com> wrote in message

> UAD comps and eqs so I'm not too worried anyway.
> Of course there were Paris plugs all over the place too.
>
> I did encounter a crazy error trying to install a stereo SIR
> across unequal length tracks. That's to be expected still.
> All plugs were loaded while the transport was running.
> Autotune made the transport stop but not SIR.
>
> Next I will install Cubase and lock with Paris. Those soft synths
> should give it a work out.
>
> Ha ha ha hahahahaaaaaaa,
> T.
>
>
> "Tom Bruhl" <arpeggio@comcast.net> wrote in message news:4959a14a@linux...
>> Hi Kerry,
>>
>> Ya Mike is a major league player regarding Paris that's for sure.
>> I have been installing many plugins and
>> so far with great success. I am about to wrap them and see
>> how they function. Many are DX and work right out of the
>> box. Some of the VSTs do too. The Waves SSL is sweet
>> and didn't show it's quirky display problem that shut the
>> transport down in my old comp. There is a driver update
>> for some video cards because of it.
>>
>> I am going back at it and will try to make it quit from
>> abuse again only this time with as many SIRs as I can get
>> going as inserts. This should be fun!
>>
>> I'll post back.
>> Tom
>>
>>
>>
>> "Kerry Galloway" <kg@kerrygalloway.com> wrote in message
>> news:C57ECC48.C1AF%kg@kerrygalloway.com...
>>> Huge news, Tom - congratulations, and thanks for trailblazing for
>>> everyone!
>>> I'll be watching the process with extreme interest - my production buddy
>>> is
>>> all PC and he wants to have a pretty brawny computer in the studio, so
>>> this
>>> couldn't have come at a better time for me.
>>>
>>> Mike, looks like you hit it out of the park.
>>>

>>> - K
>>>
>>>
>>> On 12/29/08 2:06 PM, in article 49594d55@linux, "Tom Bruhl"
>>> <arpeggio@comcast.net> wrote:
>>>
>>>> Well everyone, Mike has saved the day by updating the
>>>> PSCL for me in particular. I was receiving a new error
>>>> never seen before. After more than a few trys Mike seems
>>>> to have nailed it. Again no funny workarounds with XP Pro,
>>>> 2 mecs, 5 eds, Magma, UAD-2, Quadcore, etc..
>>>>
>>>> I will continue loading plugins then finally add the Creamware card.
>>>>
>>>> 1 EDS card is sharing with video, USB controllers and a few other
>>>> less important things. Not a glitch in operation and the beast is
>>>> smooth
>>>> and stable. Config in Paris is 64, 160, 210,000. I know, weird but
>>>> not an error in sight and that's dragging 10 tracks in time all over
>>>> the
>>>> editor and dropping them whereeva... while it's playing 24 tracks with
>>>> edits.
>>>> The gui is displaying at the sample level on 4 submixes too.
>>>>
>>>> I think you will all like this very very much.
>>>>
>>>> Happy as a lark,
>>>> Tom
>>>>
>>>>
>>>>
>>>> "Tom Bruhl" <arpeggio@comcast.net> wrote in message
>>>> news:494fd4d4\$1@linux...
>>>>> Two ADATs show up in Mec 2 in a 5 eds card -
>>>>> two mec setup using a quad core. One ADAT
>>>>> also was installed in Mec 1 at the time. I can't
>>>>> confirm ADAT sync at this time but the gui operated
>>>>> as expected in the patchbay.
>>>>>
>>>>> I'll need to pick up a creamware sync plate for that test.
>>>>> I may try the adat machine after all is well here.
>>>>>
>>>>> Tom
>>>>>
>>>>>
>>>>> "Tom Bruhl" <arpeggio@comcast.net> wrote in message
>>>>> news:494faffc@linux...
>>>>>> I'll slap two adats into MEC 2 and see what happens for you guys.

Aaron,

SIR was the same to the ear.

I wondered the same thing. I haven't got Faderworks installed yet. That's tomorrow. I think it remains the same though.

Tom

"Aaron Allen" <know-spam@not_here.dude> wrote in message news:4959d4a7\$1@linux...

> Just curious... are there any latency changes in native or UAD plugs with
> the new rig or have those remained consistent at previous values?

>

> AA

>

>

> "Tom Bruhl" <arpegio@comcast.net> wrote in message news:4959d112@linux...

>> Grunt test #1:

>> 24 track mix with silly amounts of plugins.

>>

>> I added 12 mono instances of SIR. 1 Autotune.

>> 4 drumagog, 1 editor at sample level showing 6 tracks.

>> CPU averaged between 16-25%. If this can all be doubled

>> and raise the average to 50% CPU I think we'll be in good

>> shape with these newfangled computers. I use primarily

>> UAD comps and eqs so I'm not too worried anyway.

>> Of course there were Paris plugs all over the place too.

>>

>> I did encounter a crazy error trying to install a stereo SIR

>> across unequal length tracks. That's to be expected still.

>> All plugs were loaded while the transport was running.

>> Autotune made the transport stop but not SIR.

>>

>> Next I will install Cubase and lock with Paris. Those soft synths

>> should give it a work out.

>>

>> Ha ha ha hahahahaaaaaa,

>> T.

>>

>>

>> "Tom Bruhl" <arpegio@comcast.net> wrote in message news:4959a14a@linux...

>>> Hi Kerry,

>>>

>>> Ya Mike is a major league player regarding Paris that's for sure.
>>> I have been installing many plugins and
>>> so far with great success. I am about to wrap them and see
>>> how they function. Many are DX and work right out of the
>>> box. Some of the VSTs do too. The Waves SSL is sweet
>>> and didn't show it's quirky display problem that shut the
>>> transport down in my old comp. There is a driver update
>>> for some video cards because of it.
>>>
>>> I am going back at it and will try to make it quit from
>>> abuse again only this time with as many SIRs as I can get
>>> going as inserts. This should be fun!
>>>
>>> I'll post back.
>>> Tom
>>>
>>>
>>> "Kerry Galloway" <kg@kerrygalloway.com> wrote in message
>>> news:C57ECC48.C1AF%kg@kerrygalloway.com...
>>>> Huge news, Tom - congratulations, and thanks for trailblazing for
>>>> everyone!
>>>> I'll be watching the process with extreme interest - my production
>>>> buddy is
>>>> all PC and he wants to have a pretty brawny computer in the studio, so
>>>> this
>>>> couldn't have come at a better time for me.
>>>>
>>>> Mike, looks like you hit it out of the park.
>>>>
>>>> - K
>>>>
>>>>
>>>> On 12/29/08 2:06 PM, in article 49594d55@linux, "Tom Bruhl"
>>>> <arpeggio@comcast.net> wrote:
>>>>
>>>>> Well everyone, Mike has saved the day by updating the
>>>>> PSCL for me in particular. I was receiving a new error
>>>>> never seen before. After more than a few trys Mike seems
>>>>> to have nailed it. Again no funny workarounds with XP Pro,
>>>>> 2 mecs, 5 eds, Magma, UAD-2, Quadcore, etc..
>>>>>
>>>>> I will continue loading plugins then finally add the Creamware card.
>>>>>
>>>>> 1 EDS card is sharing with video, USB controllers and a few other
>>>>> less important things. Not a glitch in operation and the beast is
>>>>> smooth
>>>>> and stable. Config in Paris is 64, 160, 210,000. I know, weird but

>>>>> not an error in sight and that's dragging 10 tracks in time all over
>>>>> the
>>>>> editor and dropping them whereva... while it's playing 24 tracks with
>>>>> edits.
>>>>> The gui is displaying at the sample level on 4 submixes too.
>>>>>
>>>>> I think you will all like this very very much.
>>>>>
>>>>> Happy as a lark,
>>>>> Tom
>>>>>
>>>>>
>>>>>
>>>>> "Tom Bruhl" <arpegio@comcast.net> wrote in message
>>>>> news:494fd4d4\$1@linux...
>>>>>> Two ADATs show up in Mec 2 in a 5 eds card -
>>>>>> two mec setup using a quad core. One ADAT
>>>>>> also was installed in Mec 1 at the time. I can't
>>>>>> confirm ADAT sync at this time but the gui operated
>>>>>> as expected in the patchbay.
>>>>>>
>>>>>> I'll need to pick up a creamware sync plate for that test.
>>>>>> I may try the adat machine after all is well here.
>>>>>>
>>>>>> Tom
>>>>>>
>>>>>>
>>>>>> "Tom Bruhl" <arpegio@comcast.net> wrote in message
>>>>>> news:494faffc@linux...
>>>>>>> I'll slap two adats into MEC 2 and see what happens for you guys.
>>>>>>>
>>>>>>> Tom
>>>>>>>
>>>>>>>
>>>>>>> "Aaron Allen" <know-spam@not_here.dude> wrote in message
>>>>>>> news:494fa209@linux...
>>>>>>>> A new box is in consideration, and maybe a few more adat cards to
>>>>>>>> link up
>>>>>>>> my Creamware setup to it.
>>>>>>>>
>>>>>>>> AA
>>>>>>>>
>>>>>>>> "Mike Audet" <mike@mikeaudet.com> wrote in message
>>>>>>>> news:494f81fa\$1@linux...
>>>>>>>>> Aaron Allen wrote:
>>>>>>>>>> Are you using multiple Adat cards with the adat updated drivers,
>>>>>>>>>> per
>>>>>>>>>> chance?

> installed yet. That's tomorrow. I think it remains the
> same though.
>
> Tom
>
>
>
>
> "Aaron Allen" <know-spam@not_here.dude> wrote in message
> news:4959d4a7\$1@linux...
>> Just curious... are there any latency changes in native or UAD plugs with
>> the new rig or have those remained consistent at previous values?
>>
>> AA
>>
>>
>> "Tom Bruhl" <arpeggio@comcast.net> wrote in message news:4959d112@linux...
>>> Grunt test #1:
>>> 24 track mix with silly amounts of plugins.
>>>
>>> I added 12 mono instances of SIR. 1 Autotune.
>>> 4 drumagog, 1 editor at sample level showing 6 tracks.
>>> CPU averaged between 16-25%. If this can all be doubled
>>> and raise the average to 50% CPU I think we'll be in good
>>> shape with these newfangled computers. I use primarily
>>> UAD comps and eqs so I'm not too worried anyway.
>>> Of course there were Paris plugs all over the place too.
>>>
>>> I did encounter a crazy error trying to install a stereo SIR
>>> across unequal length tracks. That's to be expected still.
>>> All plugs were loaded while the transport was running.
>>> Autotune made the transport stop but not SIR.
>>>
>>> Next I will install Cubase and lock with Paris. Those soft synths
>>> should give it a work out.
>>>
>>> Ha ha ha hahahahaaaaaaa,
>>> T.
>>>
>>>
>>> "Tom Bruhl" <arpeggio@comcast.net> wrote in message
>>> news:4959a14a@linux...
>>>> Hi Kerry,
>>>>
>>>> Ya Mike is a major league player regarding Paris that's for sure.
>>>> I have been installing many plugins and
>>>> so far with great success. I am about to wrap them and see
>>>> how they function. Many are DX and work right out of the

>>>> box. Some of the VSTs do too. The Waves SSL is sweet
>>>> and didn't show it's quirky display problem that shut the
>>>> transport down in my old comp. There is a driver update
>>>> for some video cards because of it.
>>>>
>>>> I am going back at it and will try to make it quit from
>>>> abuse again only this time with as many SIRs as I can get
>>>> going as inserts. This should be fun!
>>>>
>>>> I'll post back.
>>>> Tom
>>>>
>>>>
>>>>
>>>> "Kerry Galloway" <kg@kerrygalloway.com> wrote in message
>>>> news:C57ECC48.C1AF%kg@kerrygalloway.com...
>>>>> Huge news, Tom - congratulations, and thanks for trailblazing for
>>>>> everyone!
>>>>> I'll be watching the process with extreme interest - my production
>>>>> buddy is
>>>>> all PC and he wants to have a pretty brawny computer in the studio, so
>>>>> this
>>>>> couldn't have come at a better time for me.
>>>>>
>>>>> Mike, looks like you hit it out of the park.
>>>>>
>>>>> - K
>>>>>
>>>>>
>>>>> On 12/29/08 2:06 PM, in article 49594d55@linux, "Tom Bruhl"
>>>>> <arpeggio@comcast.net> wrote:
>>>>>
>>>>>> Well everyone, Mike has saved the day by updating the
>>>>>> PSCL for me in particular. I was receiving a new error
>>>>>> never seen before. After more than a few trys Mike seems
>>>>>> to have nailed it. Again no funny workarounds with XP Pro,
>>>>>> 2 mecs, 5 eds, Magma, UAD-2, Quadcore, etc..
>>>>>>
>>>>>> I will continue loading plugins then finally add the Creamware card.
>>>>>>
>>>>>>> 1 EDS card is sharing with video, USB controllers and a few other
>>>>>>> less important things. Not a glitch in operation and the beast is
>>>>>>> smooth
>>>>>>> and stable. Config in Paris is 64, 160, 210,000. I know, weird but
>>>>>>> not an error in sight and that's dragging 10 tracks in time all over
>>>>>>> the
>>>>>>> editor and dropping them whereva... while it's playing 24 tracks with
>>>>>>> edits.

>>>>> The gui is displaying at the sample level on 4 submixes too.
>>>>>
>>>>> I think you will all like this very very much.
>>>>>
>>>>> Happy as a lark,
>>>>> Tom
>>>>>
>>>>>
>>>>>
>>>>> "Tom Bruhl" <arpegio@comcast.net> wrote in message
>>>>> news:494fd4d4\$1@linux...
>>>>> Two ADATs show up in Mec 2 in a 5 eds card -
>>>>> two mec setup using a quad core. One ADAT
>>>>> also was installed in Mec 1 at the time. I can't
>>>>> confirm ADAT sync at this time but the gui operated
>>>>> as expected in the patchbay.
>>>>>
>>>>> I'll need to pick up a creamware sync plate for that test.
>>>>> I may try the adat machine after all is well here.
>>>>>
>>>>> Tom
>>>>>
>>>>>
>>>>> "Tom Bruhl" <arpegio@comcast.net> wrote in message
>>>>> news:494faffc@linux...
>>>>>> I'll slap two adats into MEC 2 and see what happens for you guys.
>>>>>>
>>>>>> Tom
>>>>>>
>>>>>>
>>>>>> "Aaron Allen" <know-spam@not_here.dude> wrote in message
>>>>>> news:494fa209@linux...
>>>>>>> A new box is in consideration, and maybe a few more adat cards to
>>>>>>> link up
>>>>>>> my Creamware setup to it.
>>>>>>>
>>>>>>> AA
>>>>>>>
>>>>>>> "Mike Audet" <mike@mikeaudet.com> wrote in message
>>>>>>> news:494f81fa\$1@linux...
>>>>>>>> Aaron Allen wrote:
>>>>>>>>> Are you using multiple Adat cards with the adat updated drivers,
>>>>>>>>> per
>>>>>>>>> chance?
>>>>>>>>> AA
>>>>>>>>>
>>>>>>>>> Hi Aaron,
>>>>>>>>>

>
> "Tom Bruhl" <arpeggio@comcast.net> wrote in message news:4959d71c@linux...
>> Aaron,
>>
>> SIR was the same to the ear.
>>
>> I wondered the same thing. I haven't got Faderworks
>> installed yet. That's tomorrow. I think it remains the
>> same though.
>>
>> Tom
>>
>>
>>
>>
>> "Aaron Allen" <know-spam@not_here.dude> wrote in message
>> news:4959d4a7\$1@linux...
>>> Just curious... are there any latency changes in native or UAD plugs
>>> with the new rig or have those remained consistent at previous values?
>>>
>>> AA
>>>
>>>
>>> "Tom Bruhl" <arpeggio@comcast.net> wrote in message
>>> news:4959d112@linux...
>>>> Grunt test #1:
>>>> 24 track mix with silly amounts of plugins.
>>>>
>>>> I added 12 mono instances of SIR. 1 Autotune.
>>>> 4 drumagog, 1 editor at sample level showing 6 tracks.
>>>> CPU averaged between 16-25%. If this can all be doubled
>>>> and raise the average to 50% CPU I think we'll be in good
>>>> shape with these newfangled computers. I use primarily
>>>> UAD comps and eqs so I'm not too worried anyway.
>>>> Of course there were Paris plugs all over the place too.
>>>>
>>>> I did encounter a crazy error trying to install a stereo SIR
>>>> across unequal length tracks. That's to be expected still.
>>>> All plugs were loaded while the transport was running.
>>>> Autotune made the transport stop but not SIR.
>>>>
>>>> Next I will install Cubase and lock with Paris. Those soft synths
>>>> should give it a work out.
>>>>
>>>> Ha ha ha hahahahahaha
>>>> T.
>>>>
>>>>

>>>> "Tom Bruhl" <arpegio@comcast.net> wrote in message
>>>> news:4959a14a@linux...
>>>>> Hi Kerry,
>>>>>
>>>>> Ya Mike is a major league player regarding Paris that's for sure.
>>>>> I have been installing many plugins and
>>>>> so far with great success. I am about to wrap them and see
>>>>> how they function. Many are DX and work right out of the
>>>>> box. Some of the VSTs do too. The Waves SSL is sweet
>>>>> and didn't show it's quirky display problem that shut the
>>>>> transport down in my old comp. There is a driver update
>>>>> for some video cards because of it.
>>>>>
>>>>> I am going back at it and will try to make it quit from
>>>>> abuse again only this time with as many SIRs as I can get
>>>>> going as inserts. This should be fun!
>>>>>
>>>>> I'll post back.
>>>>> Tom
>>>>>
>>>>>
>>>>>
>>>>> "Kerry Galloway" <kg@kerrygalloway.com> wrote in message
>>>>> news:C57ECC48.C1AF%kg@kerrygalloway.com...
>>>>>> Huge news, Tom - congratulations, and thanks for trailblazing for
>>>>>> everyone!
>>>>>> I'll be watching the process with extreme interest - my production
>>>>>> buddy is
>>>>>> all PC and he wants to have a pretty brawny computer in the studio,
>>>>>> so this
>>>>>> couldn't have come at a better time for me.
>>>>>>
>>>>>> Mike, looks like you hit it out of the park.
>>>>>>
>>>>>> - K
>>>>>>
>>>>>>
>>>>>> On 12/29/08 2:06 PM, in article 49594d55@linux, "Tom Bruhl"
>>>>>> <arpegio@comcast.net> wrote:
>>>>>>
>>>>>>> Well everyone, Mike has saved the day by updating the
>>>>>>> PSCL for me in particular. I was receiving a new error
>>>>>>> never seen before. After more than a few trys Mike seems
>>>>>>> to have nailed it. Again no funny workarounds with XP Pro,
>>>>>>> 2 mecs, 5 eds, Magma, UAD-2, Quadcore, etc..
>>>>>>>
>>>>>>> I will continue loading plugins then finally add the Creamware card.
>>>>>>>

>>>>>> 1 EDS card is sharing with video, USB controllers and a few other
>>>>>> less important things. Not a glitch in operation and the beast is
>>>>>> smooth
>>>>>> and stable. Config in Paris is 64, 160, 210,000. I know, weird
>>>>>> but
>>>>>> not an error in sight and that's dragging 10 tracks in time all over
>>>>>> the
>>>>>> editor and dropping them whereva... while it's playing 24 tracks
>>>>>> with edits.
>>>>>> The gui is displaying at the sample level on 4 submixes too.
>>>>>>
>>>>>> I think you will all like this very very much.
>>>>>>
>>>>>> Happy as a lark,
>>>>>> Tom
>>>>>>
>>>>>>
>>>>>>
>>>>>> "Tom Bruhl" <arpegio@comcast.net> wrote in message
>>>>>> news:494fd4d4\$1@linux...
>>>>>>> Two ADATs show up in Mec 2 in a 5 eds card -
>>>>>>> two mec setup using a quad core. One ADAT
>>>>>>> also was installed in Mec 1 at the time. I can't
>>>>>>> confirm ADAT sync at this time but the gui operated
>>>>>>> as expected in the patchbay.
>>>>>>>
>>>>>>> I'll need to pick up a creamware sync plate for that test.
>>>>>>> I may try the adat machine after all is well here.
>>>>>>>
>>>>>>> Tom
>>>>>>>
>>>>>>>
>>>>>>> "Tom Bruhl" <arpegio@comcast.net> wrote in message
>>>>>>> news:494faffc@linux...
>>>>>>>> I'll slap two adats into MEC 2 and see what happens for you guys.
>>>>>>>>
>>>>>>>> Tom
>>>>>>>>
>>>>>>>>
>>>>>>>> "Aaron Allen" <know-spam@not_here.dude> wrote in message
>>>>>>>> news:494fa209@linux...
>>>>>>>>> A new box is in consideration, and maybe a few more adat cards to
>>>>>>>>> link up
>>>>>>>>> my Creamware setup to it.
>>>>>>>>>
>>>>>>>>> AA
>>>>>>>>>
>>>>>>>>> "Mike Audet" <mike@mikeaudet.com> wrote in message

"Tom Bruhl" <arpegio@comcast.net> wrote in message news:495f03fc@linux...
> Creamware install not easy or working.
> Waiting for tech support.
>
> Probably all my fault.
> Tom
>
>
> "Tom Bruhl" <arpegio@comcast.net> wrote in message
> news:495bcc27\$1@linux...
>> All plugs are in Paris, wrapped and working with a UAD-2 and UAD-1 ver
>> 5.2.
>> Paris is working like a champ now. FaderWorks 1.4 is also a savior.
>> Backup is done. Cubase 4, Creamware 4.5 and Kontakt 3 are next.
>>
>> I'll be back at it after the new year gigs are done. Have a good one
>> guys and gals.
>>
>> Tom
>>
>>
>> "Tom Bruhl" <arpegio@comcast.net> wrote in message news:4959d71c@linux...
>>> Aaron,
>>>
>>> SIR was the same to the ear.
>>>
>>> I wondered the same thing. I haven't got Faderworks
>>> installed yet. That's tomorrow. I think it remains the
>>> same though.
>>>
>>> Tom
>>>
>>>
>>>
>>>
>>> "Aaron Allen" <know-spam@not_here.dude> wrote in message
>>> news:4959d4a7\$1@linux...
>>>> Just curious... are there any latency changes in native or UAD plugs
>>>> with the new rig or have those remained consistent at previous values?
>>>>
>>>> AA
>>>>
>>>>
>>>> "Tom Bruhl" <arpegio@comcast.net> wrote in message
>>>> news:4959d112@linux...
>>>>> Grunt test #1:
>>>>> 24 track mix with silly amounts of plugins.
>>>>>

>>>>> I added 12 mono instances of SIR. 1 Autotune.
>>>>> 4 drumagog, 1 editor at sample level showing 6 tracks.
>>>>> CPU averaged between 16-25%. If this can all be doubled
>>>>> and raise the average to 50% CPU I think we'll be in good
>>>>> shape with these newfangled computers. I use primarily
>>>>> UAD comps and eqs so I'm not too worried anyway.
>>>>> Of course there were Paris plugs all over the place too.
>>>>>
>>>>> I did encounter a crazy error trying to install a stereo SIR
>>>>> across unequal length tracks. That's to be expected still.
>>>>> All plugs were loaded while the transport was running.
>>>>> Autotune made the transport stop but not SIR.
>>>>>
>>>>> Next I will install Cubase and lock with Paris. Those soft synths
>>>>> should give it a work out.
>>>>>
>>>>> Ha ha ha hahahahahaaaaaa,
>>>>> T.
>>>>>
>>>>>
>>>>> "Tom Bruhl" <arpeggio@comcast.net> wrote in message
>>>>> news:4959a14a@linux...
>>>>>> Hi Kerry,
>>>>>>
>>>>>> Ya Mike is a major league player regarding Paris that's for sure.
>>>>>> I have been installing many plugins and
>>>>>> so far with great success. I am about to wrap them and see
>>>>>> how they function. Many are DX and work right out of the
>>>>>> box. Some of the VSTs do too. The Waves SSL is sweet
>>>>>> and didn't show it's quirky display problem that shut the
>>>>>> transport down in my old comp. There is a driver update
>>>>>> for some video cards because of it.
>>>>>>
>>>>>> I am going back at it and will try to make it quit from
>>>>>> abuse again only this time with as many SIRs as I can get
>>>>>> going as inserts. This should be fun!
>>>>>>
>>>>>> I'll post back.
>>>>>> Tom
>>>>>>
>>>>>>
>>>>>>
>>>>>> "Kerry Galloway" <kg@kerrygalloway.com> wrote in message
>>>>>> news:C57ECC48.C1AF%kg@kerrygalloway.com...
>>>>>>> Huge news, Tom - congratulations, and thanks for trailblazing for
>>>>>>> everyone!
>>>>>>> I'll be watching the process with extreme interest - my production
>>>>>>> buddy is

>>>>>> all PC and he wants to have a pretty brawny computer in the studio,
>>>>>> so this
>>>>>> couldn't have come at a better time for me.
>>>>>>
>>>>>> Mike, looks like you hit it out of the park.
>>>>>>
>>>>>> - K
>>>>>>
>>>>>>
>>>>>> On 12/29/08 2:06 PM, in article 49594d55@linux, "Tom Bruhl"
>>>>>> <arpeggio@comcast.net> wrote:
>>>>>>
>>>>>>> Well everyone, Mike has saved the day by updating the
>>>>>>> PSCL for me in particular. I was receiving a new error
>>>>>>> never seen before. After more than a few trys Mike seems
>>>>>>> to have nailed it. Again no funny workarounds with XP Pro,
>>>>>>> 2 mecs, 5 eds, Magma, UAD-2, Quadcore, etc..
>>>>>>>
>>>>>>> I will continue loading plugins then finally add the Creamware
>>>>>>> card.
>>>>>>>
>>>>>>> 1 EDS card is sharing with video, USB controllers and a few other
>>>>>>> less important things. Not a glitch in operation and the beast is
>>>>>>> smooth
>>>>>>> and stable. Config in Paris is 64, 160, 210,000. I know, weird
>>>>>>> but
>>>>>>> not an error in sight and that's dragging 10 tracks in time all
>>>>>>> over the
>>>>>>> editor and dropping them whereva... while it's playing 24 tracks
>>>>>>> with edits.
>>>>>>> The gui is displaying at the sample level on 4 submixes too.
>>>>>>>
>>>>>>> I think you will all like this very very much.
>>>>>>>
>>>>>>> Happy as a lark,
>>>>>>> Tom
>>>>>>>
>>>>>>>
>>>>>>>
>>>>>>> "Tom Bruhl" <arpeggio@comcast.net> wrote in message
>>>>>>> news:494fd4d4\$1@linux...
>>>>>>>> Two ADATs show up in Mec 2 in a 5 eds card -
>>>>>>>> two mec setup using a quad core. One ADAT
>>>>>>>> also was installed in Mec 1 at the time. I can't
>>>>>>>> confirm ADAT sync at this time but the gui operated
>>>>>>>> as expected in the patchbay.
>>>>>>>>
>>>>>>>> I'll need to pick up a creamware sync plate for that test.

>>>>
>>>>
>>>>
>>>>
>>>
>>>
>>>
>>
>>
>>
>
>

Subject: Re: Grunt Test #1
Posted by [Tom Bruhl](#) on Sat, 03 Jan 2009 17:29:39 GMT
[View Forum Message](#) <> [Reply to Message](#)

Hi Aaron,

Well the card goes in first but no 'restart the computer' after drivers were found. Still shows in Device manager as working. I continue to load software. First I have to load about 30 codes OR go get a 'keyfile' from their website. I can't my personal data anywhere on their website so I manually type them in. Okay, now it asks for hardware and software serial numbers. Hardware is easy software is nowhere to be found even with a windows search. I skip that. It continues to load the goods. I think, okay I'll just have to wait for a software code then all will be fine. No. After the install completes there is no .exe to start the program even in Program Files. I find it on the CD and it tries to start except it's missing a couple of other files. I copy it to the program folder in all possible locations and even do a search for the missing files. Not there. No worky.

Now I'm wanting to uninstall and wait for guidance. The uninstall won't work either.

Good thing there's a backup of before this incident.

Have a good weekend. I'll get it when someone calls or emails with support. Dimitrios?

Tom

"Aaron Allen" <know-spam@not_here.dude> wrote in message news:495f13ee\$1@linux...
> If I remember right their idea of copy protection is pretty goofy and

> unfriendly to the end user. Although, NOTHING like the crap Tascam/Giga
> has put me through. Hang in there bro, I'm sure you'll nail it down.
>
> AA
>
>
> "Tom Bruhl" <arpegio@comcast.net> wrote in message news:495f03fc@linux...
>> Creamware install not easy or working.
>> Waiting for tech support.
>>
>> Probably all my fault.
>> Tom
>>
>>
>> "Tom Bruhl" <arpegio@comcast.net> wrote in message
>> news:495bcc27\$1@linux...
>>> All plugs are in Paris, wrapped and working with a UAD-2 and UAD-1 ver
>>> 5.2.
>>> Paris is working like a champ now. FaderWorks 1.4 is also a savior.
>>> Backup is done. Cubase 4, Creamware 4.5 and Kontakt 3 are next.
>>>
>>> I'll be back at it after the new year gigs are done. Have a good one
>>> guys and gals.
>>>
>>> Tom
>>>
>>>
>>> "Tom Bruhl" <arpegio@comcast.net> wrote in message
>>> news:4959d71c@linux...
>>>> Aaron,
>>>>
>>>> SIR was the same to the ear.
>>>>
>>>> I wondered the same thing. I haven't got Faderworks
>>>> installed yet. That's tomorrow. I think it remains the
>>>> same though.
>>>>
>>>> Tom
>>>>
>>>>
>>>>
>>>>
>>>> "Aaron Allen" <know-spam@not_here.dude> wrote in message
>>>> news:4959d4a7\$1@linux...
>>>>> Just curious... are there any latency changes in native or UAD plugs
>>>>> with the new rig or have those remained consistent at previous values?
>>>>>
>>>>> AA

>>>>
>>>>
>>>> "Tom Bruhl" <arpegio@comcast.net> wrote in message
>>>> news:4959d112@linux...
>>>>> Grunt test #1:
>>>>> 24 track mix with silly amounts of plugins.
>>>>>
>>>>> I added 12 mono instances of SIR. 1 Autotune.
>>>>> 4 drumagog, 1 editor at sample level showing 6 tracks.
>>>>> CPU averaged between 16-25%. If this can all be doubled
>>>>> and raise the average to 50% CPU I think we'll be in good
>>>>> shape with these newfangled computers. I use primarily
>>>>> UAD comps and eqs so I'm not too worried anyway.
>>>>> Of course there were Paris plugs all over the place too.
>>>>>
>>>>> I did encounter a crazy error trying to install a stereo SIR
>>>>> across unequal length tracks. That's to be expected still.
>>>>> All plugs were loaded while the transport was running.
>>>>> Autotune made the transport stop but not SIR.
>>>>>
>>>>> Next I will install Cubase and lock with Paris. Those soft synths
>>>>> should give it a work out.
>>>>>
>>>>> Ha ha ha hahahahaaaaaaa,
>>>>> T.
>>>>>
>>>>>
>>>>> "Tom Bruhl" <arpegio@comcast.net> wrote in message
>>>>> news:4959a14a@linux...
>>>>>> Hi Kerry,
>>>>>>
>>>>>> Ya Mike is a major league player regarding Paris that's for sure.
>>>>>> I have been installing many plugins and
>>>>>> so far with great success. I am about to wrap them and see
>>>>>> how they function. Many are DX and work right out of the
>>>>>> box. Some of the VSTs do too. The Waves SSL is sweet
>>>>>> and didn't show it's quirky display problem that shut the
>>>>>> transport down in my old comp. There is a driver update
>>>>>> for some video cards because of it.
>>>>>>
>>>>>> I am going back at it and will try to make it quit from
>>>>>> abuse again only this time with as many SIRs as I can get
>>>>>> going as inserts. This should be fun!
>>>>>>
>>>>>> I'll post back.
>>>>>> Tom
>>>>>>
>>>>>>
>>>>>>

>>>>>>
>>>>>> "Kerry Galloway" <kg@kerrygalloway.com> wrote in message
>>>>>> news:C57ECC48.C1AF%kg@kerrygalloway.com...
>>>>>> Huge news, Tom - congratulations, and thanks for trailblazing for
>>>>>> everyone!
>>>>>> I'll be watching the process with extreme interest - my production
>>>>>> buddy is
>>>>>> all PC and he wants to have a pretty brawny computer in the studio,
>>>>>> so this
>>>>>> couldn't have come at a better time for me.
>>>>>>
>>>>>> Mike, looks like you hit it out of the park.
>>>>>>
>>>>>> - K
>>>>>>
>>>>>>
>>>>>> On 12/29/08 2:06 PM, in article 49594d55@linux, "Tom Bruhl"
>>>>>> <arpegio@comcast.net> wrote:
>>>>>>
>>>>>>> Well everyone, Mike has saved the day by updating the
>>>>>>> PSCL for me in particular. I was receiving a new error
>>>>>>> never seen before. After more than a few trys Mike seems
>>>>>>> to have nailed it. Again no funny workarounds with XP Pro,
>>>>>>> 2 mecs, 5 eds, Magma, UAD-2, Quadcore, etc..
>>>>>>>
>>>>>>> I will continue loading plugins then finally add the Creamware
>>>>>>> card.
>>>>>>>
>>>>>>> 1 EDS card is sharing with video, USB controllers and a few other
>>>>>>> less important things. Not a glitch in operation and the beast is
>>>>>>> smooth
>>>>>>> and stable. Config in Paris is 64, 160, 210,000. I know, weird
>>>>>>> but
>>>>>>> not an error in sight and that's dragging 10 tracks in time all
>>>>>>> over the
>>>>>>> editor and dropping them whereva... while it's playing 24 tracks
>>>>>>> with edits.
>>>>>>> The gui is displaying at the sample level on 4 submixes too.
>>>>>>>
>>>>>>> I think you will all like this very very much.
>>>>>>>
>>>>>>> Happy as a lark,
>>>>>>> Tom
>>>>>>>
>>>>>>>
>>>>>>>
>>>>>>> "Tom Bruhl" <arpegio@comcast.net> wrote in message
>>>>>>> news:494fd4d4\$1@linux...

>>>>>>>>> Two ADATs show up in Mec 2 in a 5 eds card -
>>>>>>>>> two mec setup using a quad core. One ADAT
>>>>>>>>> also was installed in Mec 1 at the time. I can't
>>>>>>>>> confirm ADAT sync at this time but the gui operated
>>>>>>>>> as expected in the patchbay.
>>>>>>>>>
>>>>>>>>> I'll need to pick up a creamware sync plate for that test.
>>>>>>>>> I may try the adat machine after all is well here.
>>>>>>>>>
>>>>>>>>> Tom
>>>>>>>>>
>>>>>>>>>
>>>>>>>>> "Tom Bruhl" <arpeggio@comcast.net> wrote in message
>>>>>>>>> news:494faffc@linux...
>>>>>>>>>> I'll slap two adats into MEC 2 and see what happens for you
>>>>>>>>>> guys.
>>>>>>>>>>
>>>>>>>>>> Tom
>>>>>>>>>>
>>>>>>>>>>
>>>>>>>>>>> "Aaron Allen" <know-spam@not_here.dude> wrote in message
>>>>>>>>>>> news:494fa209@linux...
>>>>>>>>>>>> A new box is in consideration, and maybe a few more adat cards
>>>>>>>>>>>> to link up
>>>>>>>>>>>> my Creamware setup to it.
>>>>>>>>>>>>
>>>>>>>>>>>> AA
>>>>>>>>>>>>
>>>>>>>>>>>>> "Mike Audet" <mike@mikeaudet.com> wrote in message
>>>>>>>>>>>>> news:494f81fa\$1@linux...
>>>>>>>>>>>>>> Aaron Allen wrote:
>>>>>>>>>>>>>>> Are you using multiple Adat cards with the adat updated
>>>>>>>>>>>>>>>> drivers, per
>>>>>>>>>>>>>>>> chance?
>>>>>>>>>>>>>>>> AA
>>>>>>>>>>>>>>>>
>>>>>>>>>>>>>>>> Hi Aaron,
>>>>>>>>>>>>>>>>
>>>>>>>>>>>>>>>>> Have you tried that yet, or are you just considering trying
>>>>>>>>>>>>>>>>> it?
>>>>>>>>>>>>>>>>>
>>>>>>>>>>>>>>>>>> If there are any issues, I want to fix them. :)
>>>>>>>>>>>>>>>>>>
>>>>>>>>>>>>>>>>>> All the best,
>>>>>>>>>>>>>>>>>>
>>>>>>>>>>>>>>>>>> Mike
>>>>>>>>>>>>>>>>>>
>>>>>>>>>>>>>>>>>>

"Tom Bruhl" <arpegio@comcast.net> wrote in message news:495fa3d7@linux...

> Hi Aaron,

>

> Well the card goes in first but no 'restart the computer' after

> drivers were found. Still shows in Device manager as working.

> I continue to load software. First I have to load about 30 codes

> OR go get a 'keyfile' from their website. I can't my personal data

> anywhere on their website so I manually type them in. Okay, now

> it asks for hardware and software serial numbers. Hardware is easy

> software is nowhere to be found even with a windows search. I

> skip that. It continues to load the goods. I think, okay I'll just have

> to

> wait for a software code then all will be fine. No. After the install

> completes there is no .exe to start the program even in Program Files.

> I find it on the CD and it tries to start except it's missing a couple of

> other

> files. I copy it to the program folder in all possible locations and even

> do a

> search for the missing files. Not there. No worky.

>

> Now I'm wanting to uninstall and wait for guidance. The uninstall won't

> work either.

>

> Good thing there's a backup of before this incident.

>

> Have a good weekend. I'll get it when someone calls or emails with

> support.

> Dimitrios?

>

> Tom

>

>

> "Aaron Allen" <know-spam@not_here.dude> wrote in message

> news:495f13ee\$1@linux...

>> If I remember right their idea of copy protection is pretty goofy and

>> unfriendly to the end user. Although, NOTHING like the crap Tascam/Giga

>> has put me through. Hang in there bro, I'm sure you'll nail it down.

>>

>> AA

>>

>>

>> "Tom Bruhl" <arpegio@comcast.net> wrote in message news:495f03fc@linux...

>>> Creamware install not easy or working.

>>> Waiting for tech support.

>>>

>>> Probably all my fault.

>>> Tom
>>>
>>>
>>> "Tom Bruhl" <arpegio@comcast.net> wrote in message
>>> news:495bcc27\$1@linux...
>>>> All plugs are in Paris, wrapped and working with a UAD-2 and UAD-1 ver
>>>> 5.2.
>>>> Paris is working like a champ now. FaderWorks 1.4 is also a savior.
>>>> Backup is done. Cubase 4, Creamware 4.5 and Kontakt 3 are next.
>>>>
>>>> I'll be back at it after the new year gigs are done. Have a good one
>>>> guys and gals.
>>>>
>>>> Tom
>>>>
>>>>
>>>> "Tom Bruhl" <arpegio@comcast.net> wrote in message
>>>> news:4959d71c@linux...
>>>>> Aaron,
>>>>>
>>>>> SIR was the same to the ear.
>>>>>
>>>>> I wondered the same thing. I haven't got Faderworks
>>>>> installed yet. That's tomorrow. I think it remains the
>>>>> same though.
>>>>>
>>>>> Tom
>>>>>
>>>>>
>>>>>
>>>>>
>>>>> "Aaron Allen" <know-spam@not_here.dude> wrote in message
>>>>> news:4959d4a7\$1@linux...
>>>>>> Just curious... are there any latency changes in native or UAD plugs
>>>>>> with the new rig or have those remained consistent at previous
>>>>>> values?
>>>>>>
>>>>>> AA
>>>>>>
>>>>>>
>>>>>> "Tom Bruhl" <arpegio@comcast.net> wrote in message
>>>>>> news:4959d112@linux...
>>>>>>> Grunt test #1:
>>>>>>> 24 track mix with silly amounts of plugins.
>>>>>>>
>>>>>>> I added 12 mono instances of SIR. 1 Autotune.
>>>>>>> 4 drumagog, 1 editor at sample level showing 6 tracks.
>>>>>>> CPU averaged between 16-25%. If this can all be doubled

>>>>>> and raise the average to 50% CPU I think we'll be in good
>>>>>> shape with these newfangled computers. I use primarily
>>>>>> UAD comps and eqs so I'm not too worried anyway.
>>>>>> Of course there were Paris plugs all over the place too.
>>>>>>
>>>>>> I did encounter a crazy error trying to install a stereo SIR
>>>>>> across unequal length tracks. That's to be expected still.
>>>>>> All plugs were loaded while the transport was running.
>>>>>> Autotune made the transport stop but not SIR.
>>>>>>
>>>>>> Next I will install Cubase and lock with Paris. Those soft synths
>>>>>> should give it a work out.
>>>>>>
>>>>>> Ha ha ha hahahahaaaaaa,
>>>>>> T.
>>>>>>
>>>>>>
>>>>>> "Tom Bruhl" <arpeggio@comcast.net> wrote in message
>>>>>> news:4959a14a@linux...
>>>>>> Hi Kerry,
>>>>>>
>>>>>> Ya Mike is a major league player regarding Paris that's for sure.
>>>>>> I have been installing many plugins and
>>>>>> so far with great success. I am about to wrap them and see
>>>>>> how they function. Many are DX and work right out of the
>>>>>> box. Some of the VSTs do too. The Waves SSL is sweet
>>>>>> and didn't show it's quirky display problem that shut the
>>>>>> transport down in my old comp. There is a driver update
>>>>>> for some video cards because of it.
>>>>>>
>>>>>> I am going back at it and will try to make it quit from
>>>>>> abuse again only this time with as many SIRs as I can get
>>>>>> going as inserts. This should be fun!
>>>>>>
>>>>>> I'll post back.
>>>>>> Tom
>>>>>>
>>>>>>
>>>>>>
>>>>>> "Kerry Galloway" <kg@kerrygalloway.com> wrote in message
>>>>>> news:C57ECC48.C1AF%kg@kerrygalloway.com...
>>>>>>> Huge news, Tom - congratulations, and thanks for trailblazing for
>>>>>>> everyone!
>>>>>>> I'll be watching the process with extreme interest - my production
>>>>>>> buddy is
>>>>>>> all PC and he wants to have a pretty brawny computer in the
>>>>>>> studio, so this
>>>>>>> couldn't have come at a better time for me.

>>>>>>>>
>>>>>>>> Mike, looks like you hit it out of the park.
>>>>>>>>
>>>>>>>> - K
>>>>>>>>
>>>>>>>>
>>>>>>>> On 12/29/08 2:06 PM, in article 49594d55@linux, "Tom Bruhl"
>>>>>>>> <arpeggio@comcast.net> wrote:
>>>>>>>>
>>>>>>>> Well everyone, Mike has saved the day by updating the
>>>>>>>> PSCL for me in particular. I was receiving a new error
>>>>>>>> never seen before. After more than a few trys Mike seems
>>>>>>>> to have nailed it. Again no funny workarounds with XP Pro,
>>>>>>>> 2 mecs, 5 eds, Magma, UAD-2, Quadcore, etc..
>>>>>>>>
>>>>>>>> I will continue loading plugins then finally add the Creamware
>>>>>>>> card.
>>>>>>>>
>>>>>>>> 1 EDS card is sharing with video, USB controllers and a few other
>>>>>>>> less important things. Not a glitch in operation and the beast
>>>>>>>> is smooth
>>>>>>>> and stable. Config in Paris is 64, 160, 210,000. I know, weird
>>>>>>>> but
>>>>>>>> not an error in sight and that's dragging 10 tracks in time all
>>>>>>>> over the
>>>>>>>> editor and dropping them whereva... while it's playing 24 tracks
>>>>>>>> with edits.
>>>>>>>> The gui is displaying at the sample level on 4 submixes too.
>>>>>>>>
>>>>>>>> I think you will all like this very very much.
>>>>>>>>
>>>>>>>> Happy as a lark,
>>>>>>>> Tom
>>>>>>>>
>>>>>>>>
>>>>>>>>
>>>>>>>> "Tom Bruhl" <arpeggio@comcast.net> wrote in message
>>>>>>>> news:494fd4d4\$1@linux...
>>>>>>>> Two ADATs show up in Mec 2 in a 5 eds card -
>>>>>>>> two mec setup using a quad core. One ADAT
>>>>>>>> also was installed in Mec 1 at the time. I can't
>>>>>>>> confirm ADAT sync at this time but the gui operated
>>>>>>>> as expected in the patchbay.
>>>>>>>>
>>>>>>>> I'll need to pick up a creamware sync plate for that test.
>>>>>>>> I may try the adat machine after all is well here.
>>>>>>>>
>>>>>>>> Tom

>
>
>
>
>
> "Tom Bruhl" <arpeggio@comcast.net> wrote in message news:495fa3d7@linux...
>> Hi Aaron,
>>
>> Well the card goes in first but no 'restart the computer' after
>> drivers were found. Still shows in Device manager as working.
>> I continue to load software. First I have to load about 30 codes
>> OR go get a 'keyfile' from their website. I can't my personal data
>> anywhere on their website so I manually type them in. Okay, now
>> it asks for hardware and software serial numbers. Hardware is easy
>> software is nowhere to be found even with a windows search. I
>> skip that. It continues to load the goods. I think, okay I'll just have
>> to
>> wait for a software code then all will be fine. No. After the install
>> completes there is no .exe to start the program even in Program Files.
>> I find it on the CD and it tries to start except it's missing a couple of
>> other
>> files. I copy it to the program folder in all possible locations and
>> even do a
>> search for the missing files. Not there. No worky.
>>
>> Now I'm wanting to uninstall and wait for guidance. The uninstall won't
>> work either.
>>
>> Good thing there's a backup of before this incident.
>>
>> Have a good weekend. I'll get it when someone calls or emails with
>> support.
>> Dimitrios?
>>
>> Tom
>>
>>
>> "Aaron Allen" <know-spam@not_here.dude> wrote in message
>> news:495f13ee\$1@linux...
>>> If I remember right their idea of copy protection is pretty goofy and
>>> unfriendly to the end user. Although, NOTHING like the crap Tascam/Giga
>>> has put me through. Hang in there bro, I'm sure you'll nail it down.
>>>
>>> AA
>>>
>>>
>>> "Tom Bruhl" <arpeggio@comcast.net> wrote in message
>>> news:495f03fc@linux...
>>>> Creamware install not easy or working.

>>>> Waiting for tech support.
>>>>
>>>> Probably all my fault.
>>>> Tom
>>>>
>>>>
>>>> "Tom Bruhl" <arpeggio@comcast.net> wrote in message
>>>> news:495bcc27\$1@linux...
>>>>> All plugs are in Paris, wrapped and working with a UAD-2 and UAD-1 ver
>>>>> 5.2.
>>>>> Paris is working like a champ now. FaderWorks 1.4 is also a savior.
>>>>> Backup is done. Cubase 4, Creamware 4.5 and Kontakt 3 are next.
>>>>>
>>>>> I'll be back at it after the new year gigs are done. Have a good one
>>>>> guys and gals.
>>>>>
>>>>> Tom
>>>>>
>>>>>
>>>>> "Tom Bruhl" <arpeggio@comcast.net> wrote in message
>>>>> news:4959d71c@linux...
>>>>>> Aaron,
>>>>>>
>>>>>> SIR was the same to the ear.
>>>>>>
>>>>>> I wondered the same thing. I haven't got Faderworks
>>>>>> installed yet. That's tomorrow. I think it remains the
>>>>>> same though.
>>>>>>
>>>>>> Tom
>>>>>>
>>>>>>
>>>>>>
>>>>>>
>>>>>> "Aaron Allen" <know-spam@not_here.dude> wrote in message
>>>>>> news:4959d4a7\$1@linux...
>>>>>>> Just curious... are there any latency changes in native or UAD plugs
>>>>>>> with the new rig or have those remained consistent at previous
>>>>>>> values?
>>>>>>>
>>>>>>> AA
>>>>>>>
>>>>>>>
>>>>>>> "Tom Bruhl" <arpeggio@comcast.net> wrote in message
>>>>>>> news:4959d112@linux...
>>>>>>>> Grunt test #1:
>>>>>>>> 24 track mix with silly amounts of plugins.
>>>>>>>>

>>>>>>> I added 12 mono instances of SIR. 1 Autotune.
>>>>>>> 4 drumagog, 1 editor at sample level showing 6 tracks.
>>>>>>> CPU averaged between 16-25%. If this can all be doubled
>>>>>>> and raise the average to 50% CPU I think we'll be in good
>>>>>>> shape with these newfangled computers. I use primarily
>>>>>>> UAD comps and eqs so I'm not too worried anyway.
>>>>>>> Of course there were Paris plugs all over the place too.
>>>>>>>
>>>>>>> I did encounter a crazy error trying to install a stereo SIR
>>>>>>> across unequal length tracks. That's to be expected still.
>>>>>>> All plugs were loaded while the transport was running.
>>>>>>> Autotune made the transport stop but not SIR.
>>>>>>>
>>>>>>> Next I will install Cubase and lock with Paris. Those soft synths
>>>>>>> should give it a work out.
>>>>>>>
>>>>>>> Ha ha ha hahahahaaaaaaa,
>>>>>>> T.
>>>>>>>
>>>>>>>
>>>>>>> "Tom Bruhl" <arpegio@comcast.net> wrote in message
>>>>>>> news:4959a14a@linux...
>>>>>>> Hi Kerry,
>>>>>>>
>>>>>>> Ya Mike is a major league player regarding Paris that's for sure.
>>>>>>> I have been installing many plugins and
>>>>>>> so far with great success. I am about to wrap them and see
>>>>>>> how they function. Many are DX and work right out of the
>>>>>>> box. Some of the VSTs do too. The Waves SSL is sweet
>>>>>>> and didn't show it's quirky display problem that shut the
>>>>>>> transport down in my old comp. There is a driver update
>>>>>>> for some video cards because of it.
>>>>>>>
>>>>>>> I am going back at it and will try to make it quit from
>>>>>>> abuse again only this time with as many SIRs as I can get
>>>>>>> going as inserts. This should be fun!
>>>>>>>
>>>>>>> I'll post back.
>>>>>>> Tom
>>>>>>>
>>>>>>>
>>>>>>>
>>>>>>> "Kerry Galloway" <kg@kerrygalloway.com> wrote in message
>>>>>>> news:C57ECC48.C1AF%kg@kerrygalloway.com...
>>>>>>> Huge news, Tom - congratulations, and thanks for trailblazing for
>>>>>>> everyone!
>>>>>>> I'll be watching the process with extreme interest - my
>>>>>>> production buddy is

>>>>>>>> all PC and he wants to have a pretty brawny computer in the
>>>>>>>> studio, so this
>>>>>>>> couldn't have come at a better time for me.
>>>>>>>>
>>>>>>>> Mike, looks like you hit it out of the park.
>>>>>>>>
>>>>>>>> - K
>>>>>>>>
>>>>>>>>
>>>>>>>> On 12/29/08 2:06 PM, in article 49594d55@linux, "Tom Bruhl"
>>>>>>>> <arpeggio@comcast.net> wrote:
>>>>>>>>
>>>>>>>>> Well everyone, Mike has saved the day by updating the
>>>>>>>>> PSCL for me in particular. I was receiving a new error
>>>>>>>>> never seen before. After more than a few trys Mike seems
>>>>>>>>> to have nailed it. Again no funny workarounds with XP Pro,
>>>>>>>>> 2 mecs, 5 eds, Magma, UAD-2, Quadcore, etc..
>>>>>>>>>
>>>>>>>>> I will continue loading plugins then finally add the Creamware
>>>>>>>>> card.
>>>>>>>>>
>>>>>>>>> 1 EDS card is sharing with video, USB controllers and a few
>>>>>>>>> other
>>>>>>>>> less important things. Not a glitch in operation and the beast
>>>>>>>>> is smooth
>>>>>>>>> and stable. Config in Paris is 64, 160, 210,000. I know,
>>>>>>>>> weird but
>>>>>>>>> not an error in sight and that's dragging 10 tracks in time all
>>>>>>>>> over the
>>>>>>>>> editor and dropping them whereva... while it's playing 24 tracks
>>>>>>>>> with edits.
>>>>>>>>> The gui is displaying at the sample level on 4 submixes too.
>>>>>>>>>
>>>>>>>>> I think you will all like this very very much.
>>>>>>>>>
>>>>>>>>> Happy as a lark,
>>>>>>>>> Tom
>>>>>>>>>
>>>>>>>>>
>>>>>>>>> "Tom Bruhl" <arpeggio@comcast.net> wrote in message
>>>>>>>>> news:494fd4d4\$1@linux...
>>>>>>>>> Two ADATs show up in Mec 2 in a 5 eds card -
>>>>>>>>> two mec setup using a quad core. One ADAT
>>>>>>>>> also was installed in Mec 1 at the time. I can't
>>>>>>>>> confirm ADAT sync at this time but the gui operated
>>>>>>>>> as expected in the patchbay.
>>>>>>>>>

>>>>>>>>>> I'll need to pick up a creamware sync plate for that test.
>>>>>>>>>> I may try the adat machine after all is well here.
>>>>>>>>>>
>>>>>>>>>> Tom
>>>>>>>>>>
>>>>>>>>>>
>>>>>>>>>> "Tom Bruhl" <arpegio@comcast.net> wrote in message
>>>>>>>>>> news:494faffc@linux...
>>>>>>>>>> I'll slap two adats into MEC 2 and see what happens for you
>>>>>>>>>> guys.
>>>>>>>>>>
>>>>>>>>>> Tom
>>>>>>>>>>
>>>>>>>>>>
>>>>>>>>>> "Aaron Allen" <know-spam@not_here.dude> wrote in message
>>>>>>>>>> news:494fa209@linux...
>>>>>>>>>> A new box is in consideration, and maybe a few more adat
>>>>>>>>>> cards to link up
>>>>>>>>>> my Creamware setup to it.
>>>>>>>>>>
>>>>>>>>>> AA
>>>>>>>>>>
>>>>>>>>>> "Mike Audet" <mike@mikeaudet.com> wrote in message
>>>>>>>>>> news:494f81fa\$1@linux...
>>>>>>>>>> Aaron Allen wrote:
>>>>>>>>>> Are you using multiple Adat cards with the adat updated
>>>>>>>>>> drivers, per
>>>>>>>>>> chance?
>>>>>>>>>> AA
>>>>>>>>>>
>>>>>>>>>> Hi Aaron,
>>>>>>>>>>
>>>>>>>>>> Have you tried that yet, or are you just considering trying
>>>>>>>>>> it?
>>>>>>>>>>
>>>>>>>>>> If there are any issues, I want to fix them. :)
>>>>>>>>>>
>>>>>>>>>> All the best,
>>>>>>>>>>
>>>>>>>>>> Mike
>>>>>>>>>>
>>>>>>>>>>
>>>>>>>>>>
>>>>>>>>>>
>>>>>>>>>>
>>>>>>>>>>
>>>>>>>>>>
>>>>>>>>>>
>>>>>>>>>>

>> 5 x EDS, 2 x Mecs (2 mecs on the way), XP, WC, 2 x ADAT modules
>> present in Mec 2.
>> 1 x UAD-2 Duo, 1 x UAD-1
>> Scope Pro card (14 shark chip)
>>
>> No Problem.
>>
>> Whew!
>>
>> Tom
>>
>> PS The secret for Scope was to copy to the hard drive first then
>> install.
>> Don't know why but it helped after three try's prior.
>>
>>
>>
>> "Tom Bruhl" <arpegio@comcast.net> wrote in message news:495fa3d7@linux...
>>> Hi Aaron,
>>>
>>> Well the card goes in first but no 'restart the computer' after
>>> drivers were found. Still shows in Device manager as working.
>>> I continue to load software. First I have to load about 30 codes
>>> OR go get a 'keyfile' from their website. I can't my personal data
>>> anywhere on their website so I manually type them in. Okay, now
>>> it asks for hardware and software serial numbers. Hardware is easy
>>> software is nowhere to be found even with a windows search. I
>>> skip that. It continues to load the goods. I think, okay I'll just
>>> have to
>>> wait for a software code then all will be fine. No. After the install
>>> completes there is no .exe to start the program even in Program Files.
>>> I find it on the CD and it tries to start except it's missing a couple
>>> of other
>>> files. I copy it to the program folder in all possible locations and
>>> even do a
>>> search for the missing files. Not there. No worky.
>>>
>>> Now I'm wanting to uninstall and wait for guidance. The uninstall won't
>>> work either.
>>>
>>> Good thing there's a backup of before this incident.
>>>
>>> Have a good weekend. I'll get it when someone calls or emails with
>>> support.
>>> Dimitrios?
>>>
>>> Tom

>>>
>>>
>>> "Aaron Allen" <know-spam@not_here.dude> wrote in message
>>> news:495f13ee\$1@linux...
>>>> If I remember right their idea of copy protection is pretty goofy and
>>>> unfriendly to the end user. Although, NOTHING like the crap Tascam/Giga
>>>> has put me through. Hang in there bro, I'm sure you'll nail it down.
>>>>
>>>> AA
>>>>
>>>>
>>>> "Tom Bruhl" <arpegio@comcast.net> wrote in message
>>>> news:495f03fc@linux...
>>>>> Creamware install not easy or working.
>>>>> Waiting for tech support.
>>>>>
>>>>> Probably all my fault.
>>>>> Tom
>>>>>
>>>>>
>>>>> "Tom Bruhl" <arpegio@comcast.net> wrote in message
>>>>> news:495bcc27\$1@linux...
>>>>>> All plugs are in Paris, wrapped and working with a UAD-2 and UAD-1
>>>>>> ver 5.2.
>>>>>> Paris is working like a champ now. FaderWorks 1.4 is also a savior.
>>>>>> Backup is done. Cubase 4, Creamware 4.5 and Kontakt 3 are next.
>>>>>>
>>>>>> I'll be back at it after the new year gigs are done. Have a good one
>>>>>> guys and gals.
>>>>>>
>>>>>> Tom
>>>>>>
>>>>>>
>>>>>> "Tom Bruhl" <arpegio@comcast.net> wrote in message
>>>>>> news:4959d71c@linux...
>>>>>>> Aaron,
>>>>>>>
>>>>>>> SIR was the same to the ear.
>>>>>>>
>>>>>>> I wondered the same thing. I haven't got Faderworks
>>>>>>> installed yet. That's tomorrow. I think it remains the
>>>>>>> same though.
>>>>>>>
>>>>>>> Tom
>>>>>>>
>>>>>>>
>>>>>>>
>>>>>>>

>>>>>> "Aaron Allen" <know-spam@not_here.dude> wrote in message
>>>>>> news:4959d4a7\$1@linux...
>>>>>> Just curious... are there any latency changes in native or UAD
>>>>>> plugs with the new rig or have those remained consistent at
>>>>>> previous values?
>>>>>>
>>>>>> AA
>>>>>>
>>>>>>
>>>>>> "Tom Bruhl" <arpeggio@comcast.net> wrote in message
>>>>>> news:4959d112@linux...
>>>>>> Grunt test #1:
>>>>>> 24 track mix with silly amounts of plugins.
>>>>>>
>>>>>> I added 12 mono instances of SIR. 1 Autotune.
>>>>>> 4 drumagog, 1 editor at sample level showing 6 tracks.
>>>>>> CPU averaged between 16-25%. If this can all be doubled
>>>>>> and raise the average to 50% CPU I think we'll be in good
>>>>>> shape with these newfangled computers. I use primarily
>>>>>> UAD comps and eqs so I'm not too worried anyway.
>>>>>> Of course there were Paris plugs all over the place too.
>>>>>>
>>>>>> I did encounter a crazy error trying to install a stereo SIR
>>>>>> across unequal length tracks. That's to be expected still.
>>>>>> All plugs were loaded while the transport was running.
>>>>>> Autotune made the transport stop but not SIR.
>>>>>>
>>>>>> Next I will install Cubase and lock with Paris. Those soft synths
>>>>>> should give it a work out.
>>>>>>
>>>>>> Ha ha ha hahahahahaha
>>>>>> T.
>>>>>>
>>>>>>
>>>>>> "Tom Bruhl" <arpeggio@comcast.net> wrote in message
>>>>>> news:4959a14a@linux...
>>>>>> Hi Kerry,
>>>>>>
>>>>>>> Ya Mike is a major league player regarding Paris that's for sure.
>>>>>>> I have been installing many plugins and
>>>>>>> so far with great success. I am about to wrap them and see
>>>>>>> how they function. Many are DX and work right out of the
>>>>>>> box. Some of the VSTs do too. The Waves SSL is sweet
>>>>>>> and didn't show it's quirky display problem that shut the
>>>>>>> transport down in my old comp. There is a driver update
>>>>>>> for some video cards because of it.
>>>>>>>
>>>>>>> I am going back at it and will try to make it quit from

>>>>>>>> abuse again only this time with as many SIRs as I can get
>>>>>>>> going as inserts. This should be fun!
>>>>>>>>
>>>>>>>> I'll post back.
>>>>>>>> Tom
>>>>>>>>
>>>>>>>>
>>>>>>>>
>>>>>>>> "Kerry Galloway" <kg@kerrygalloway.com> wrote in message
>>>>>>>> news:C57ECC48.C1AF%kg@kerrygalloway.com...
>>>>>>>> Huge news, Tom - congratulations, and thanks for trailblazing
>>>>>>>> for everyone!
>>>>>>>> I'll be watching the process with extreme interest - my
>>>>>>>> production buddy is
>>>>>>>> all PC and he wants to have a pretty brawny computer in the
>>>>>>>> studio, so this
>>>>>>>> couldn't have come at a better time for me.
>>>>>>>>
>>>>>>>> Mike, looks like you hit it out of the park.
>>>>>>>>
>>>>>>>> - K
>>>>>>>>
>>>>>>>>
>>>>>>>> On 12/29/08 2:06 PM, in article 49594d55@linux, "Tom Bruhl"
>>>>>>>> <arpeggio@comcast.net> wrote:
>>>>>>>>
>>>>>>>>> Well everyone, Mike has saved the day by updating the
>>>>>>>>> PSCL for me in particular. I was receiving a new error
>>>>>>>>> never seen before. After more than a few trys Mike seems
>>>>>>>>> to have nailed it. Again no funny workarounds with XP Pro,
>>>>>>>>> 2 mecs, 5 eds, Magma, UAD-2, Quadcore, etc..
>>>>>>>>>
>>>>>>>>> I will continue loading plugins then finally add the Creamware
>>>>>>>>> card.
>>>>>>>>>
>>>>>>>>> 1 EDS card is sharing with video, USB controllers and a few
>>>>>>>>> other
>>>>>>>>> less important things. Not a glitch in operation and the beast
>>>>>>>>> is smooth
>>>>>>>>> and stable. Config in Paris is 64, 160, 210,000. I know,
>>>>>>>>> weird but
>>>>>>>>> not an error in sight and that's dragging 10 tracks in time all
>>>>>>>>> over the
>>>>>>>>> editor and dropping them whereva... while it's playing 24
>>>>>>>>> tracks with edits.
>>>>>>>>> The gui is displaying at the sample level on 4 submixes too.
>>>>>>>>>
>>>>>>>>> I think you will all like this very very much.

```

>>>>>>>>>>>
>>>>>>>>>>> Happy as a lark,
>>>>>>>>>>> Tom
>>>>>>>>>>>
>>>>>>>>>>>
>>>>>>>>>>>
>>>>>>>>>>> "Tom Bruhl" <arpegio@comcast.net> wrote in message
>>>>>>>>>>> news:494fd4d4$1@linux...
>>>>>>>>>>> Two ADATs show up in Mec 2 in a 5 eds card -
>>>>>>>>>>> two mec setup using a quad core. One ADAT
>>>>>>>>>>> also was installed in Mec 1 at the time. I can't
>>>>>>>>>>> confirm ADAT sync at this time but the gui operated
>>>>>>>>>>> as expected in the patchbay.
>>>>>>>>>>>
>>>>>>>>>>> I'll need to pick up a creamware sync plate for that test.
>>>>>>>>>>> I may try the adat machine after all is well here.
>>>>>>>>>>>
>>>>>>>>>>> Tom
>>>>>>>>>>>
>>>>>>>>>>>
>>>>>>>>>>> "Tom Bruhl" <arpegio@comcast.net> wrote in message
>>>>>>>>>>> news:494faffc@linux...
>>>>>>>>>>> I'll slap two adats into MEC 2 and see what happens for you
>>>>>>>>>>> guys.
>>>>>>>>>>>
>>>>>>>>>>> Tom
>>>>>>>>>>>
>>>>>>>>>>>
>>>>>>>>>>> "Aaron Allen" <know-spam@not_here.dude> wrote in message
>>>>>>>>>>> news:494fa209@linux...
>>>>>>>>>>> A new box is in consideration, and maybe a few more adat
>>>>>>>>>>> cards to link up
>>>>>>>>>>> my Creamware setup to it.
>>>>>>>>>>>
>>>>>>>>>>> AA
>>>>>>>>>>>
>>>>>>>>>>> "Mike Audet" <mike@mikeaudet.com> wrote in message
>>>>>>>>>>> news:494f81fa$1@linux...
>>>>>>>>>>> Aaron Allen wrote:
>>>>>>>>>>>>>>>>>>> Are you using multiple Adat cards with the adat updated
>>>>>>>>>>>>>>>>>>> drivers, per
>>>>>>>>>>>>>>>>>>> chance?
>>>>>>>>>>>>>>>>>>> AA
>>>>>>>>>>>>>>>>>>>
>>>>>>>>>>>>>>>>>>> Hi Aaron,
>>>>>>>>>>>>>>>>>>>
>>>>>>>>>>>>>>>>>>> Have you tried that yet, or are you just considering trying
>>>>>>>>>>>>>>>>>>> it?

```


>
>
> "Tom Bruhl" <arpegio@comcast.net> wrote in message
> news:4966a483\$1@linux...
>> Got Wavelab happy with Creamware card. Both Paris
>> and Wavelab were running two projects at the same time
>> (Scope in the background too) with no glitches and very low CPU.
>>
>> Off to Cubase 4.5.2
>>
>> Tom
>>
>>
>> "Tom Bruhl" <arpegio@comcast.net> wrote in message
>> news:49643eb5\$1@linux...
>>> Got Scope running as it should. ADAT clock is being recognized
>>> from Paris. No problem having both apps up and running together.
>>> I will install Cubase tomorrow and see how that frigs things up.
>>> Backups are wonderful.
>>>
>>> As it stands:
>>> 5 x EDS, 2 x Mecs (2 mecs on the way), XP, WC, 2 x ADAT modules
>>> present in Mec 2.
>>> 1 x UAD-2 Duo, 1 x UAD-1
>>> Scope Pro card (14 shark chip)
>>>
>>> No Problem.
>>>
>>> Whew!
>>>
>>> Tom
>>>
>>> PS The secret for Scope was to copy to the hard drive first then
>>> install.
>>> Don't know why but it helped after three try's prior.
>>>
>>>
>>>
>>>
>>> "Tom Bruhl" <arpegio@comcast.net> wrote in message
>>> news:495fa3d7@linux...
>>>> Hi Aaron,
>>>>
>>>> Well the card goes in first but no 'restart the computer' after
>>>> drivers were found. Still shows in Device manager as working.
>>>> I continue to load software. First I have to load about 30 codes
>>>> OR go get a 'keyfile' from their website. I can't my personal data
>>>> anywhere on their website so I manually type them in. Okay, now

>>>> it asks for hardware and software serial numbers. Hardware is easy
>>>> software is nowhere to be found even with a windows search. I
>>>> skip that. It continues to load the goods. I think, okay I'll just
>>>> have to
>>>> wait for a software code then all will be fine. No. After the install
>>>> completes there is no .exe to start the program even in Program Files.
>>>> I find it on the CD and it tries to start except it's missing a couple
>>>> of other
>>>> files. I copy it to the program folder in all possible locations and
>>>> even do a
>>>> search for the missing files. Not there. No worky.
>>>>
>>>> Now I'm wanting to uninstall and wait for guidance. The uninstall
>>>> won't work either.
>>>>
>>>> Good thing there's a backup of before this incident.
>>>>
>>>> Have a good weekend. I'll get it when someone calls or emails with
>>>> support.
>>>> Dimitrios?
>>>>
>>>> Tom
>>>>
>>>>
>>>> "Aaron Allen" <know-spam@not_here.dude> wrote in message
>>>> news:495f13ee\$1@linux...
>>>>> If I remember right their idea of copy protection is pretty goofy and
>>>>> unfriendly to the end user. Although, NOTHING like the crap
>>>>> Tascam/Giga has put me through. Hang in there bro, I'm sure you'll
>>>>> nail it down.
>>>>>
>>>>> AA
>>>>>
>>>>>
>>>>> "Tom Bruhl" <arpegio@comcast.net> wrote in message
>>>>> news:495f03fc@linux...
>>>>>> Creamware install not easy or working.
>>>>>> Waiting for tech support.
>>>>>>
>>>>>> Probably all my fault.
>>>>>> Tom
>>>>>>
>>>>>>
>>>>>> "Tom Bruhl" <arpegio@comcast.net> wrote in message
>>>>>> news:495bcc27\$1@linux...
>>>>>>> All plugs are in Paris, wrapped and working with a UAD-2 and UAD-1
>>>>>>> ver 5.2.
>>>>>>> Paris is working like a champ now. FaderWorks 1.4 is also a savior.

>>>>>> Backup is done. Cubase 4, Creamware 4.5 and Kontakt 3 are next.
>>>>>>
>>>>>> I'll be back at it after the new year gigs are done. Have a good
>>>>>> one guys and gals.
>>>>>>
>>>>>> Tom
>>>>>>
>>>>>>
>>>>>> "Tom Bruhl" <arpegio@comcast.net> wrote in message
>>>>>> news:4959d71c@linux...
>>>>>> Aaron,
>>>>>>
>>>>>> SIR was the same to the ear.
>>>>>>
>>>>>> I wondered the same thing. I haven't got Faderworks
>>>>>> installed yet. That's tomorrow. I think it remains the
>>>>>> same though.
>>>>>>
>>>>>> Tom
>>>>>>
>>>>>>
>>>>>>
>>>>>>
>>>>>> "Aaron Allen" <know-spam@not_here.dude> wrote in message
>>>>>> news:4959d4a7\$1@linux...
>>>>>> Just curious... are there any latency changes in native or UAD
>>>>>> plugs with the new rig or have those remained consistent at
>>>>>> previous values?
>>>>>>
>>>>>> AA
>>>>>>
>>>>>>
>>>>>> "Tom Bruhl" <arpegio@comcast.net> wrote in message
>>>>>> news:4959d112@linux...
>>>>>> Grunt test #1:
>>>>>> 24 track mix with silly amounts of plugins.
>>>>>>
>>>>>> I added 12 mono instances of SIR. 1 Autotune.
>>>>>> 4 drumagog, 1 editor at sample level showing 6 tracks.
>>>>>> CPU averaged between 16-25%. If this can all be doubled
>>>>>> and raise the average to 50% CPU I think we'll be in good
>>>>>> shape with these newfangled computers. I use primarily
>>>>>> UAD comps and eqs so I'm not too worried anyway.
>>>>>> Of course there were Paris plugs all over the place too.
>>>>>>
>>>>>> I did encounter a crazy error trying to install a stereo SIR
>>>>>> across unequal length tracks. That's to be expected still.
>>>>>> All plugs were loaded while the transport was running.

>>>>>>>> Autotune made the transport stop but not SIR.
>>>>>>>>
>>>>>>>> Next I will install Cubase and lock with Paris. Those soft
>>>>>>>> synths
>>>>>>>> should give it a work out.
>>>>>>>>
>>>>>>>> Ha ha ha hahahahahaaaaaa,
>>>>>>>> T.
>>>>>>>>
>>>>>>>>
>>>>>>>> "Tom Bruhl" <arpeggio@comcast.net> wrote in message
>>>>>>>> news:4959a14a@linux...
>>>>>>>> Hi Kerry,
>>>>>>>>
>>>>>>>> Ya Mike is a major league player regarding Paris that's for
>>>>>>>> sure.
>>>>>>>> I have been installing many plugins and
>>>>>>>> so far with great success. I am about to wrap them and see
>>>>>>>> how they function. Many are DX and work right out of the
>>>>>>>> box. Some of the VSTs do too. The Waves SSL is sweet
>>>>>>>> and didn't show it's quirky display problem that shut the
>>>>>>>> transport down in my old comp. There is a driver update
>>>>>>>> for some video cards because of it.
>>>>>>>>
>>>>>>>> I am going back at it and will try to make it quit from
>>>>>>>> abuse again only this time with as many SIRs as I can get
>>>>>>>> going as inserts. This should be fun!
>>>>>>>>
>>>>>>>> I'll post back.
>>>>>>>> Tom
>>>>>>>>
>>>>>>>>
>>>>>>>>
>>>>>>>> "Kerry Galloway" <kg@kerrygalloway.com> wrote in message
>>>>>>>> news:C57ECC48.C1AF%kg@kerrygalloway.com...
>>>>>>>> Huge news, Tom - congratulations, and thanks for trailblazing
>>>>>>>> for everyone!
>>>>>>>> I'll be watching the process with extreme interest - my
>>>>>>>> production buddy is
>>>>>>>> all PC and he wants to have a pretty brawny computer in the
>>>>>>>> studio, so this
>>>>>>>> couldn't have come at a better time for me.
>>>>>>>>
>>>>>>>> Mike, looks like you hit it out of the park.
>>>>>>>>
>>>>>>>> - K
>>>>>>>>
>>>>>>>>

>>>>>>>>>> On 12/29/08 2:06 PM, in article 49594d55@linux, "Tom Bruhl"
>>>>>>>>>> <arpeggio@comcast.net> wrote:
>>>>>>>>>>
>>>>>>>>>> Well everyone, Mike has saved the day by updating the
>>>>>>>>>> PSCL for me in particular. I was receiving a new error
>>>>>>>>>> never seen before. After more than a few trys Mike seems
>>>>>>>>>> to have nailed it. Again no funny workarounds with XP Pro,
>>>>>>>>>> 2 mecs, 5 eds, Magma, UAD-2, Quadcore, etc..
>>>>>>>>>>
>>>>>>>>>> I will continue loading plugins then finally add the Creamware
>>>>>>>>>> card.
>>>>>>>>>>
>>>>>>>>>> 1 EDS card is sharing with video, USB controllers and a few
>>>>>>>>>> other
>>>>>>>>>> less important things. Not a glitch in operation and the
>>>>>>>>>> beast is smooth
>>>>>>>>>> and stable. Config in Paris is 64, 160, 210,000. I know,
>>>>>>>>>> weird but
>>>>>>>>>> not an error in sight and that's dragging 10 tracks in time
>>>>>>>>>> all over the
>>>>>>>>>> editor and dropping them whereva... while it's playing 24
>>>>>>>>>> tracks with edits.
>>>>>>>>>> The gui is displaying at the sample level on 4 submixes too.
>>>>>>>>>>
>>>>>>>>>> I think you will all like this very very much.
>>>>>>>>>>
>>>>>>>>>> Happy as a lark,
>>>>>>>>>> Tom
>>>>>>>>>>
>>>>>>>>>>
>>>>>>>>>>
>>>>>>>>>> "Tom Bruhl" <arpeggio@comcast.net> wrote in message
>>>>>>>>>> news:494fd4d4\$1@linux...
>>>>>>>>>> Two ADATs show up in Mec 2 in a 5 eds card -
>>>>>>>>>> two mec setup using a quad core. One ADAT
>>>>>>>>>> also was installed in Mec 1 at the time. I can't
>>>>>>>>>> confirm ADAT sync at this time but the gui operated
>>>>>>>>>> as expected in the patchbay.
>>>>>>>>>>
>>>>>>>>>> I'll need to pick up a creamware sync plate for that test.
>>>>>>>>>> I may try the adat machine after all is well here.
>>>>>>>>>>
>>>>>>>>>> Tom
>>>>>>>>>>
>>>>>>>>>>
>>>>>>>>>> "Tom Bruhl" <arpeggio@comcast.net> wrote in message
>>>>>>>>>> news:494faffc@linux...
>>>>>>>>>> I'll slap two adats into MEC 2 and see what happens for you

>>>>>>
>>>>>>
>>>>>>
>>>>>>
>>>>>
>>>>>
>>>>
>>>>
>>>>
>>>>
>>>
>>>
>>>
>>>
>>
>>
>
>

Subject: Re: Grunt Test #1
Posted by [Tom Bruhl](#) on Fri, 16 Jan 2009 03:50:06 GMT
[View Forum Message](#) <> [Reply to Message](#)

Hi Aaron,

Thanks for your interest. I wish I had better news.

I have a serious asio problem. Creamware and Cubase 4.0 were installed but glitchy. The problem is somewhere with hardware fighting for resources. I removed everything except 5 EDS cards and still there were some glitches. Ethernet was disabled and there are no other USB devices. Paris runs like a champ through it all but asio is nothing but a train wreck. I have lost the will to go any further. This is week five of tweaking.

Paris runs great with a UAD2 and UAD1 internal latency and all. That makes for a smoking mix engine. I still have a fairly robust dualcore that had been fine with Cubase 2.1 . I will go back to that and run with it until I truly outgrow it. I will install Cubase 4.5.2 though.

Chris suggested running the Creamware card on a single core but this problem is deeper than that. Maybe it's the Magma and PCI bus? I've spent more money than I wanted to to begin with.

Tom

"Aaron Allen" <know-spam@not_here.dude> wrote in message
news:496ffef1@linux...
> Cubase no worky?
> AA
>
> "Tom Bruhl" <arpegio@comcast.net> wrote in message news:496fe664@linux...
>>I gave up.
>>
>> Tom
>>
>>
>> "Tom Bruhl" <arpegio@comcast.net> wrote in message
>> news:4966a483\$1@linux...
>>> Got Wavelab happy with Creamware card. Both Paris
>>> and Wavelab were running two projects at the same time
>>> (Scope in the background too) with no glitches and very low CPU.
>>>
>>> Off to Cubase 4.5.2
>>>
>>> Tom
>>>
>>>
>>> "Tom Bruhl" <arpegio@comcast.net> wrote in message
>>> news:49643eb5\$1@linux...
>>>> Got Scope running as it should. ADAT clock is being recognized
>>>> from Paris. No problem having both apps up and running together.
>>>> I will install Cubase tomorrow and see how that frigs things up.
>>>> Backups are wonderful.
>>>>
>>>> As it stands:
>>>> 5 x EDS, 2 x Mecs (2 mecs on the way), XP, WC, 2 x ADAT modules
>>>> present in Mec 2.
>>>> 1 x UAD-2 Duo, 1 x UAD-1
>>>> Scope Pro card (14 shark chip)
>>>>
>>>> No Problem.
>>>>
>>>> Whew!
>>>>
>>>> Tom
>>>>
>>>> PS The secret for Scope was to copy to the hard drive first then
>>>> install.
>>>> Don't know why but it helped after three try's prior.
>>>>
>>>>
>>>>

>>>>
>>>> "Tom Bruhl" <arpegio@comcast.net> wrote in message
>>>> news:495fa3d7@linux...
>>>>> Hi Aaron,
>>>>>
>>>>> Well the card goes in first but no 'restart the computer' after
>>>>> drivers were found. Still shows in Device manager as working.
>>>>> I continue to load software. First I have to load about 30 codes
>>>>> OR go get a 'keyfile' from their website. I can't my personal data
>>>>> anywhere on their website so I manually type them in. Okay, now
>>>>> it asks for hardware and software serial numbers. Hardware is easy
>>>>> software is nowhere to be found even with a windows search. I
>>>>> skip that. It continues to load the goods. I think, okay I'll just
>>>>> have to
>>>>> wait for a software code then all will be fine. No. After the
>>>>> install
>>>>> completes there is no .exe to start the program even in Program Files.
>>>>> I find it on the CD and it tries to start except it's missing a couple
>>>>> of other
>>>>> files. I copy it to the program folder in all possible locations and
>>>>> even do a
>>>>> search for the missing files. Not there. No worky.
>>>>>
>>>>> Now I'm wanting to uninstall and wait for guidance. The uninstall
>>>>> won't work either.
>>>>>
>>>>> Good thing there's a backup of before this incident.
>>>>>
>>>>> Have a good weekend. I'll get it when someone calls or emails with
>>>>> support.
>>>>> Dimitrios?
>>>>>
>>>>> Tom
>>>>>
>>>>>
>>>>> "Aaron Allen" <know-spam@not_here.dude> wrote in message
>>>>> news:495f13ee\$1@linux...
>>>>>> If I remember right their idea of copy protection is pretty goofy and
>>>>>> unfriendly to the end user. Although, NOTHING like the crap
>>>>>> Tascam/Giga has put me through. Hang in there bro, I'm sure you'll
>>>>>> nail it down.
>>>>>>
>>>>>> AA
>>>>>>
>>>>>>
>>>>>>> "Tom Bruhl" <arpegio@comcast.net> wrote in message
>>>>>>> news:495f03fc@linux...
>>>>>>>> Creamware install not easy or working.

>>>>>> Waiting for tech support.
>>>>>>
>>>>>> Probably all my fault.
>>>>>> Tom
>>>>>>
>>>>>>
>>>>>> "Tom Bruhl" <arpegio@comcast.net> wrote in message
>>>>>> news:495bcc27\$1@linux...
>>>>>> All plugs are in Paris, wrapped and working with a UAD-2 and UAD-1
>>>>>> ver 5.2.
>>>>>> Paris is working like a champ now. FaderWorks 1.4 is also a
>>>>>> savior.
>>>>>> Backup is done. Cubase 4, Creamware 4.5 and Kontakt 3 are next.
>>>>>>
>>>>>> I'll be back at it after the new year gigs are done. Have a good
>>>>>> one guys and gals.
>>>>>>
>>>>>> Tom
>>>>>>
>>>>>>
>>>>>> "Tom Bruhl" <arpegio@comcast.net> wrote in message
>>>>>> news:4959d71c@linux...
>>>>>> Aaron,
>>>>>>
>>>>>> SIR was the same to the ear.
>>>>>>
>>>>>> I wondered the same thing. I haven't got Faderworks
>>>>>> installed yet. That's tomorrow. I think it remains the
>>>>>> same though.
>>>>>>
>>>>>> Tom
>>>>>>
>>>>>>
>>>>>>
>>>>>>
>>>>>> "Aaron Allen" <know-spam@not_here.dude> wrote in message
>>>>>> news:4959d4a7\$1@linux...
>>>>>> Just curious... are there any latency changes in native or UAD
>>>>>> plugs with the new rig or have those remained consistent at
>>>>>> previous values?
>>>>>>
>>>>>> AA
>>>>>>
>>>>>>
>>>>>> "Tom Bruhl" <arpegio@comcast.net> wrote in message
>>>>>> news:4959d112@linux...
>>>>>>>> Grunt test #1:
>>>>>>>> 24 track mix with silly amounts of plugins.

>>>>>>>>>>
>>>>>>>>>> I added 12 mono instances of SIR. 1 Autotune.
>>>>>>>>>> 4 drumagog, 1 editor at sample level showing 6 tracks.
>>>>>>>>>> CPU averaged between 16-25%. If this can all be doubled
>>>>>>>>>> and raise the average to 50% CPU I think we'll be in good
>>>>>>>>>> shape with these newfangled computers. I use primarily
>>>>>>>>>> UAD comps and eqs so I'm not too worried anyway.
>>>>>>>>>> Of course there were Paris plugs all over the place too.
>>>>>>>>>>
>>>>>>>>>> I did encounter a crazy error trying to install a stereo SIR
>>>>>>>>>> across unequal length tracks. That's to be expected still.
>>>>>>>>>> All plugs were loaded while the transport was running.
>>>>>>>>>> Autotune made the transport stop but not SIR.
>>>>>>>>>>
>>>>>>>>>> Next I will install Cubase and lock with Paris. Those soft
>>>>>>>>>> synths
>>>>>>>>>> should give it a work out.
>>>>>>>>>>
>>>>>>>>>> Ha ha ha hahahahahaaaaaa,
>>>>>>>>>> T.
>>>>>>>>>>
>>>>>>>>>>
>>>>>>>>>> "Tom Bruhl" <arpeggio@comcast.net> wrote in message
>>>>>>>>>> news:4959a14a@linux...
>>>>>>>>>> Hi Kerry,
>>>>>>>>>>
>>>>>>>>>> Ya Mike is a major league player regarding Paris that's for
>>>>>>>>>> sure.
>>>>>>>>>> I have been installing many plugins and
>>>>>>>>>> so far with great success. I am about to wrap them and see
>>>>>>>>>> how they function. Many are DX and work right out of the
>>>>>>>>>> box. Some of the VSTs do too. The Waves SSL is sweet
>>>>>>>>>> and didn't show it's quirky display problem that shut the
>>>>>>>>>> transport down in my old comp. There is a driver update
>>>>>>>>>> for some video cards because of it.
>>>>>>>>>>
>>>>>>>>>> I am going back at it and will try to make it quit from
>>>>>>>>>> abuse again only this time with as many SIRs as I can get
>>>>>>>>>> going as inserts. This should be fun!
>>>>>>>>>>
>>>>>>>>>> I'll post back.
>>>>>>>>>> Tom
>>>>>>>>>>
>>>>>>>>>>
>>>>>>>>>>
>>>>>>>>>> "Kerry Galloway" <kg@kerrygalloway.com> wrote in message
>>>>>>>>>> news:C57ECC48.C1AF%kg@kerrygalloway.com...
>>>>>>>>>> Huge news, Tom - congratulations, and thanks for trailblazing

> I have a serious asio problem. Creamware and Cubase 4.0
> were installed but glitchy. The problem is somewhere
> with hardware fighting for resources. I removed everything
> except 5 EDS cards and still there were some glitches.
> Ethernet was disabled and there are no other USB devices.
> Paris runs like a champ through it all but asio is nothing
> but a train wreck. I have lost the will to go any further.
> This is week five of tweaking.
>
> Paris runs great with a UAD2 and UAD1 internal latency and all.
> That makes for a smoking mix engine. I still have a fairly robust
> dualcore that had been fine with Cubase 2.1 . I will go back to
> that and run with it until I truly outgrow it. I will install Cubase
> 4.5.2
> though.
>
> Chris suggested running the Creamware card on a single core
> but this problem is deeper than that. Maybe it's the Magma
> and PCI bus? I've spent more money than I wanted to to begin with.
>
> Tom
>
>
>
>
>
>
> "Aaron Allen" <know-spam@not_here.dude> wrote in message
> news:496ffef1@linux...
>> Cubase no worky?
>> AA
>>
>> "Tom Bruhl" <arpeggio@comcast.net> wrote in message news:496fe664@linux...
>>>I gave up.
>>>
>>> Tom
>>>
>>>
>>> "Tom Bruhl" <arpeggio@comcast.net> wrote in message
>>> news:4966a483\$1@linux...
>>>> Got Wavelab happy with Creamware card. Both Paris
>>>> and Wavelab were running two projects at the same time
>>>> (Scope in the background too) with no glitches and very low CPU.
>>>>
>>>> Off to Cubase 4.5.2
>>>>
>>>> Tom
>>>>
>>>>

>>>> "Tom Bruhl" <arpeggio@comcast.net> wrote in message
>>>> news:49643eb5\$1@linux...
>>>>> Got Scope running as it should. ADAT clock is being recognized
>>>>> from Paris. No problem having both apps up and running together.
>>>>> I will install Cubase tomorrow and see how that frigs things up.
>>>>> Backups are wonderful.
>>>>>
>>>>> As it stands:
>>>>> 5 x EDS, 2 x Mecs (2 mecs on the way), XP, WC, 2 x ADAT modules
>>>>> present in Mec 2.
>>>>> 1 x UAD-2 Duo, 1 x UAD-1
>>>>> Scope Pro card (14 shark chip)
>>>>>
>>>>> No Problem.
>>>>>
>>>>> Whew!
>>>>>
>>>>> Tom
>>>>>
>>>>> PS The secret for Scope was to copy to the hard drive first then
>>>>> install.
>>>>> Don't know why but it helped after three try's prior.
>>>>>
>>>>>
>>>>>
>>>>>
>>>>> "Tom Bruhl" <arpeggio@comcast.net> wrote in message
>>>>> news:495fa3d7@linux...
>>>>>> Hi Aaron,
>>>>>>
>>>>>>> Well the card goes in first but no 'restart the computer' after
>>>>>>> drivers were found. Still shows in Device manager as working.
>>>>>>> I continue to load software. First I have to load about 30 codes
>>>>>>> OR go get a 'keyfile' from their website. I can't my personal data
>>>>>>> anywhere on their website so I manually type them in. Okay, now
>>>>>>> it asks for hardware and software serial numbers. Hardware is easy
>>>>>>> software is nowhere to be found even with a windows search. I
>>>>>>> skip that. It continues to load the goods. I think, okay I'll just
>>>>>>> have to
>>>>>>> wait for a software code then all will be fine. No. After the
>>>>>>> install
>>>>>>> completes there is no .exe to start the program even in Program
>>>>>>> Files.
>>>>>>> I find it on the CD and it tries to start except it's missing a
>>>>>>> couple of other
>>>>>>> files. I copy it to the program folder in all possible locations and
>>>>>>> even do a
>>>>>>> search for the missing files. Not there. No worky.

>>>>>
>>>>> Now I'm wanting to uninstall and wait for guidance. The uninstall
>>>>> won't work either.
>>>>>
>>>>> Good thing there's a backup of before this incident.
>>>>>
>>>>> Have a good weekend. I'll get it when someone calls or emails with
>>>>> support.
>>>>> Dimitrios?
>>>>>
>>>>> Tom
>>>>>
>>>>>
>>>>> "Aaron Allen" <know-spam@not_here.dude> wrote in message
>>>>> news:495f13ee\$1@linux...
>>>>>> If I remember right their idea of copy protection is pretty goofy
>>>>>> and unfriendly to the end user. Although, NOTHING like the crap
>>>>>> Tascam/Giga has put me through. Hang in there bro, I'm sure you'll
>>>>>> nail it down.
>>>>>>
>>>>>> AA
>>>>>>
>>>>>>
>>>>>> "Tom Bruhl" <arpegio@comcast.net> wrote in message
>>>>>> news:495f03fc@linux...
>>>>>>> Creamware install not easy or working.
>>>>>>> Waiting for tech support.
>>>>>>>
>>>>>>> Probably all my fault.
>>>>>>> Tom
>>>>>>>
>>>>>>>
>>>>>>>> "Tom Bruhl" <arpegio@comcast.net> wrote in message
>>>>>>>> news:495bcc27\$1@linux...
>>>>>>>>> All plugs are in Paris, wrapped and working with a UAD-2 and UAD-1
>>>>>>>>> ver 5.2.
>>>>>>>>> Paris is working like a champ now. FaderWorks 1.4 is also a
>>>>>>>>> savior.
>>>>>>>>> Backup is done. Cubase 4, Creamware 4.5 and Kontakt 3 are next.
>>>>>>>>>
>>>>>>>>>> I'll be back at it after the new year gigs are done. Have a good
>>>>>>>>>> one guys and gals.
>>>>>>>>>>
>>>>>>>>>> Tom
>>>>>>>>>>
>>>>>>>>>>
>>>>>>>>>>> "Tom Bruhl" <arpegio@comcast.net> wrote in message
>>>>>>>>>>>> news:4959d71c@linux...

>>>>>>>> Aaron,
>>>>>>>>
>>>>>>>> SIR was the same to the ear.
>>>>>>>>
>>>>>>>> I wondered the same thing. I haven't got Faderworks
>>>>>>>> installed yet. That's tomorrow. I think it remains the
>>>>>>>> same though.
>>>>>>>>
>>>>>>>> Tom
>>>>>>>>
>>>>>>>>
>>>>>>>>
>>>>>>>>
>>>>>>>> "Aaron Allen" <know-spam@not_here.dude> wrote in message
>>>>>>>> news:4959d4a7\$1@linux...
>>>>>>>> Just curious... are there any latency changes in native or UAD
>>>>>>>> plugs with the new rig or have those remained consistent at
>>>>>>>> previous values?
>>>>>>>>
>>>>>>>> AA
>>>>>>>>
>>>>>>>>
>>>>>>>> "Tom Bruhl" <arpeggio@comcast.net> wrote in message
>>>>>>>> news:4959d112@linux...
>>>>>>>> Grunt test #1:
>>>>>>>> 24 track mix with silly amounts of plugins.
>>>>>>>>
>>>>>>>> I added 12 mono instances of SIR. 1 Autotune.
>>>>>>>> 4 drumagog, 1 editor at sample level showing 6 tracks.
>>>>>>>> CPU averaged between 16-25%. If this can all be doubled
>>>>>>>> and raise the average to 50% CPU I think we'll be in good
>>>>>>>> shape with these newfangled computers. I use primarily
>>>>>>>> UAD comps and eqs so I'm not too worried anyway.
>>>>>>>> Of course there were Paris plugs all over the place too.
>>>>>>>>
>>>>>>>> I did encounter a crazy error trying to install a stereo SIR
>>>>>>>> across unequal length tracks. That's to be expected still.
>>>>>>>> All plugs were loaded while the transport was running.
>>>>>>>> Autotune made the transport stop but not SIR.
>>>>>>>>
>>>>>>>> Next I will install Cubase and lock with Paris. Those soft
>>>>>>>> synths
>>>>>>>> should give it a work out.
>>>>>>>>
>>>>>>>> Ha ha ha hahahahahaaaaaa,
>>>>>>>> T.
>>>>>>>>
>>>>>>>>

>>>>>>>>>> "Tom Bruhl" <arpegio@comcast.net> wrote in message
>>>>>>>>>> news:4959a14a@linux...
>>>>>>>>>> Hi Kerry,
>>>>>>>>>>
>>>>>>>>>> Ya Mike is a major league player regarding Paris that's for
>>>>>>>>>> sure.
>>>>>>>>>> I have been installing many plugins and
>>>>>>>>>> so far with great success. I am about to wrap them and see
>>>>>>>>>> how they function. Many are DX and work right out of the
>>>>>>>>>> box. Some of the VSTs do too. The Waves SSL is sweet
>>>>>>>>>> and didn't show it's quirky display problem that shut the
>>>>>>>>>> transport down in my old comp. There is a driver update
>>>>>>>>>> for some video cards because of it.
>>>>>>>>>>
>>>>>>>>>> I am going back at it and will try to make it quit from
>>>>>>>>>> abuse again only this time with as many SIRs as I can get
>>>>>>>>>> going as inserts. This should be fun!
>>>>>>>>>>
>>>>>>>>>> I'll post back.
>>>>>>>>>> Tom
>>>>>>>>>>
>>>>>>>>>>
>>>>>>>>>> "Kerry Galloway" <kg@kerrygalloway.com> wrote in message
>>>>>>>>>> news:C57ECC48.C1AF%kg@kerrygalloway.com...
>>>>>>>>>> Huge news, Tom - congratulations, and thanks for trailblazing
>>>>>>>>>> for everyone!
>>>>>>>>>> I'll be watching the process with extreme interest - my
>>>>>>>>>> production buddy is
>>>>>>>>>> all PC and he wants to have a pretty brawny computer in the
>>>>>>>>>> studio, so this
>>>>>>>>>> couldn't have come at a better time for me.
>>>>>>>>>>
>>>>>>>>>> Mike, looks like you hit it out of the park.
>>>>>>>>>>
>>>>>>>>>> - K
>>>>>>>>>>
>>>>>>>>>>
>>>>>>>>>> On 12/29/08 2:06 PM, in article 49594d55@linux, "Tom Bruhl"
>>>>>>>>>> <arpegio@comcast.net> wrote:
>>>>>>>>>>
>>>>>>>>>> Well everyone, Mike has saved the day by updating the
>>>>>>>>>> PSCL for me in particular. I was receiving a new error
>>>>>>>>>> never seen before. After more than a few trys Mike seems
>>>>>>>>>> to have nailed it. Again no funny workarounds with XP Pro,
>>>>>>>>>> 2 mecs, 5 eds, Magma, UAD-2, Quadcore, etc..
>>>>>>>>>>
>>>>>>>>>> I will continue loading plugins then finally add the

>>>>>>>>>>>>>>> Creamware card.
>>>>>>>>>>>>>>>
>>>>>>>>>>>>>>> 1 EDS card is sharing with video, USB controllers and a few
>>>>>>>>>>>>>>> other
>>>>>>>>>>>>>>> less important things. Not a glitch in operation and the
>>>>>>>>>>>>>>> beast is smooth
>>>>>>>>>>>>>>> and stable. Config in Paris is 64, 160, 210,000. I know,
>>>>>>>>>>>>>>> weird but
>>>>>>>>>>>>>>> not an error in sight and that's dragging 10 tracks in time
>>>>>>>>>>>>>>> all over the
>>>>>>>>>>>>>>> editor and dropping them whereva... while it's playing 24
>>>>>>>>>>>>>>> tracks with edits.
>>>>>>>>>>>>>>> The gui is displaying at the sample level on 4 submixes too.
>>>>>>>>>>>>>>>
>>>>>>>>>>>>>>> I think you will all like this very very much.
>>>>>>>>>>>>>>>
>>>>>>>>>>>>>>> Happy as a lark,
>>>>>>>>>>>>>>> Tom
>>>>>>>>>>>>>>>
>>>>>>>>>>>>>>>
>>>>>>>>>>>>>>>
>>>>>>>>>>>>>>> "Tom Bruhl" <arpeggio@comcast.net> wrote in message
>>>>>>>>>>>>>>> news:494fd4d4\$1@linux...
>>>>>>>>>>>>>>> Two ADATs show up in Mec 2 in a 5 eds card -
>>>>>>>>>>>>>>> two mec setup using a quad core. One ADAT
>>>>>>>>>>>>>>> also was installed in Mec 1 at the time. I can't
>>>>>>>>>>>>>>> confirm ADAT sync at this time but the gui operated
>>>>>>>>>>>>>>> as expected in the patchbay.
>>>>>>>>>>>>>>>
>>>>>>>>>>>>>>> I'll need to pick up a creamware sync plate for that test.
>>>>>>>>>>>>>>> I may try the adat machine after all is well here.
>>>>>>>>>>>>>>>
>>>>>>>>>>>>>>> Tom
>>>>>>>>>>>>>>>
>>>>>>>>>>>>>>>
>>>>>>>>>>>>>>> "Tom Bruhl" <arpeggio@comcast.net> wrote in message
>>>>>>>>>>>>>>> news:494faffc@linux...
>>>>>>>>>>>>>>> I'll slap two adats into MEC 2 and see what happens for
>>>>>>>>>>>>>>> you guys.
>>>>>>>>>>>>>>>
>>>>>>>>>>>>>>> Tom
>>>>>>>>>>>>>>>
>>>>>>>>>>>>>>>
>>>>>>>>>>>>>>> "Aaron Allen" <know-spam@not_here.dude> wrote in message
>>>>>>>>>>>>>>> news:494fa209@linux...
>>>>>>>>>>>>>>> A new box is in consideration, and maybe a few more adat
>>>>>>>>>>>>>>> cards to link up
>>>>>>>>>>>>>>> my Creamware setup to it.

>>>>
>>>>
>>>
>>>
>>
>>
>
>

Subject: Re: Grunt Test #1
Posted by [Aaron Allen](#) on Tue, 20 Jan 2009 06:41:49 GMT
[View Forum Message](#) <> [Reply to Message](#)

jeez man.....

AA

"Tom Bruhl" <arpegio@comcast.net> wrote in message news:49757538@linux...

> Tried a bios update as well as a new C drive.

> No bootable OS now...

>

> I love this,

> Tom

>

>

>

>

> "Tom Bruhl" <arpegio@comcast.net> wrote in message

> news:49700744\$1@linux...

>> Hi Aaron,

>>

>> Thanks for your interest. I wish I had better news.

>>

>> I have a serious asio problem. Creamware and Cubase 4.0

>> were installed but glitchy. The problem is somewhere

>> with hardware fighting for resources. I removed everything

>> except 5 EDS cards and still there were some glitches.

>> Ethernet was disabled and there are no other USB devices.

>> Paris runs like a champ through it all but asio is nothing

>> but a train wreck. I have lost the will to go any further.

>> This is week five of tweaking.

>>

>> Paris runs great with a UAD2 and UAD1 internal latency and all.

>> That makes for a smoking mix engine. I still have a fairly robust

>> dualcore that had been fine with Cubase 2.1 . I will go back to

>> that and run with it until I truly outgrow it. I will install Cubase

>> 4.5.2

>> though.

>>
>> Chris suggested running the Creamware card on a single core
>> but this problem is deeper than that. Maybe it's the Magma
>> and PCI bus? I've spent more money than I wanted to to begin with.
>>
>> Tom
>>
>>
>>
>>
>>
>> "Aaron Allen" <know-spam@not_here.dude> wrote in message
>> news:496ffef1@linux...
>>> Cubase no worky?
>>> AA
>>>
>>> "Tom Bruhl" <arpeggio@comcast.net> wrote in message
>>> news:496fe664@linux...
>>>> I gave up.
>>>>
>>>> Tom
>>>>
>>>>
>>>> "Tom Bruhl" <arpeggio@comcast.net> wrote in message
>>>> news:4966a483\$1@linux...
>>>>> Got Wavelab happy with Creamware card. Both Paris
>>>>> and Wavelab were running two projects at the same time
>>>>> (Scope in the background too) with no glitches and very low CPU.
>>>>>
>>>>> Off to Cubase 4.5.2
>>>>>
>>>>> Tom
>>>>>
>>>>>
>>>>> "Tom Bruhl" <arpeggio@comcast.net> wrote in message
>>>>> news:49643eb5\$1@linux...
>>>>>> Got Scope running as it should. ADAT clock is being recognized
>>>>>> from Paris. No problem having both apps up and running together.
>>>>>> I will install Cubase tomorrow and see how that frigs things up.
>>>>>> Backups are wonderful.
>>>>>>
>>>>>> As it stands:
>>>>>>> 5 x EDS, 2 x Mecs (2 mecs on the way), XP, WC, 2 x ADAT modules
>>>>>>> present in Mec 2.
>>>>>>> 1 x UAD-2 Duo, 1 x UAD-1
>>>>>>> Scope Pro card (14 shark chip)
>>>>>>>
>>>>>>> No Problem.

>>>>>
>>>>> Whew!
>>>>>
>>>>> Tom
>>>>>
>>>>> PS The secret for Scope was to copy to the hard drive first then
>>>>> install.
>>>>> Don't know why but it helped after three try's prior.
>>>>>
>>>>>
>>>>>
>>>>>
>>>>> "Tom Bruhl" <arpegio@comcast.net> wrote in message
>>>>> news:495fa3d7@linux...
>>>>>> Hi Aaron,
>>>>>>
>>>>>> Well the card goes in first but no 'restart the computer' after
>>>>>> drivers were found. Still shows in Device manager as working.
>>>>>> I continue to load software. First I have to load about 30 codes
>>>>>> OR go get a 'keyfile' from their website. I can't my personal data
>>>>>> anywhere on their website so I manually type them in. Okay, now
>>>>>> it asks for hardware and software serial numbers. Hardware is easy
>>>>>> software is nowhere to be found even with a windows search. I
>>>>>> skip that. It continues to load the goods. I think, okay I'll just
>>>>>> have to
>>>>>> wait for a software code then all will be fine. No. After the
>>>>>> install
>>>>>> completes there is no .exe to start the program even in Program
>>>>>> Files.
>>>>>> I find it on the CD and it tries to start except it's missing a
>>>>>> couple of other
>>>>>> files. I copy it to the program folder in all possible locations
>>>>>> and even do a
>>>>>> search for the missing files. Not there. No worky.
>>>>>>
>>>>>> Now I'm wanting to uninstall and wait for guidance. The uninstall
>>>>>> won't work either.
>>>>>>
>>>>>> Good thing there's a backup of before this incident.
>>>>>>
>>>>>> Have a good weekend. I'll get it when someone calls or emails with
>>>>>> support.
>>>>>> Dimitrios?
>>>>>>
>>>>>> Tom
>>>>>>
>>>>>>
>>>>>> "Aaron Allen" <know-spam@not_here.dude> wrote in message

>>>>>> news:495f13ee\$1@linux...
>>>>>> If I remember right their idea of copy protection is pretty goofy
>>>>>> and unfriendly to the end user. Although, NOTHING like the crap
>>>>>> Tascam/Giga has put me through. Hang in there bro, I'm sure you'll
>>>>>> nail it down.
>>>>>>
>>>>>> AA
>>>>>>
>>>>>>
>>>>>> "Tom Bruhl" <arpeggio@comcast.net> wrote in message
>>>>>> news:495f03fc@linux...
>>>>>> Creamware install not easy or working.
>>>>>> Waiting for tech support.
>>>>>>
>>>>>> Probably all my fault.
>>>>>> Tom
>>>>>>
>>>>>>
>>>>>> "Tom Bruhl" <arpeggio@comcast.net> wrote in message
>>>>>> news:495bcc27\$1@linux...
>>>>>>> All plugs are in Paris, wrapped and working with a UAD-2 and
>>>>>>> UAD-1 ver 5.2.
>>>>>>> Paris is working like a champ now. FaderWorks 1.4 is also a
>>>>>>> savior.
>>>>>>> Backup is done. Cubase 4, Creamware 4.5 and Kontakt 3 are next.
>>>>>>>
>>>>>>> I'll be back at it after the new year gigs are done. Have a good
>>>>>>> one guys and gals.
>>>>>>>
>>>>>>> Tom
>>>>>>>
>>>>>>>
>>>>>>> "Tom Bruhl" <arpeggio@comcast.net> wrote in message
>>>>>>> news:4959d71c@linux...
>>>>>>>> Aaron,
>>>>>>>>
>>>>>>>> SIR was the same to the ear.
>>>>>>>>
>>>>>>>> I wondered the same thing. I haven't got Faderworks
>>>>>>>> installed yet. That's tomorrow. I think it remains the
>>>>>>>> same though.
>>>>>>>>
>>>>>>>> Tom
>>>>>>>>
>>>>>>>>
>>>>>>>>
>>>>>>>>
>>>>>>>> "Aaron Allen" <know-spam@not_here.dude> wrote in message

>>>>>>>>>> news:4959d4a7\$1@linux...
>>>>>>>>>> Just curious... are there any latency changes in native or UAD
>>>>>>>>>> plugs with the new rig or have those remained consistent at
>>>>>>>>>> previous values?
>>>>>>>>>>
>>>>>>>>>> AA
>>>>>>>>>>
>>>>>>>>>>
>>>>>>>>>> "Tom Bruhl" <arpegio@comcast.net> wrote in message
>>>>>>>>>> news:4959d112@linux...
>>>>>>>>>> Grunt test #1:
>>>>>>>>>> 24 track mix with silly amounts of plugins.
>>>>>>>>>>
>>>>>>>>>> I added 12 mono instances of SIR. 1 Autotune.
>>>>>>>>>> 4 drumagog, 1 editor at sample level showing 6 tracks.
>>>>>>>>>> CPU averaged between 16-25%. If this can all be doubled
>>>>>>>>>> and raise the average to 50% CPU I think we'll be in good
>>>>>>>>>> shape with these newfangled computers. I use primarily
>>>>>>>>>> UAD comps and eqs so I'm not too worried anyway.
>>>>>>>>>> Of course there were Paris plugs all over the place too.
>>>>>>>>>>
>>>>>>>>>> I did encounter a crazy error trying to install a stereo SIR
>>>>>>>>>> across unequal length tracks. That's to be expected still.
>>>>>>>>>> All plugs were loaded while the transport was running.
>>>>>>>>>> Autotune made the transport stop but not SIR.
>>>>>>>>>>
>>>>>>>>>> Next I will install Cubase and lock with Paris. Those soft
>>>>>>>>>> synths
>>>>>>>>>> should give it a work out.
>>>>>>>>>>
>>>>>>>>>> Ha ha ha hahahahaaaaaaa,
>>>>>>>>>> T.
>>>>>>>>>>
>>>>>>>>>>
>>>>>>>>>> "Tom Bruhl" <arpegio@comcast.net> wrote in message
>>>>>>>>>> news:4959a14a@linux...
>>>>>>>>>> Hi Kerry,
>>>>>>>>>>
>>>>>>>>>> Ya Mike is a major league player regarding Paris that's for
>>>>>>>>>> sure.
>>>>>>>>>> I have been installing many plugins and
>>>>>>>>>> so far with great success. I am about to wrap them and see
>>>>>>>>>> how they function. Many are DX and work right out of the
>>>>>>>>>> box. Some of the VSTs do too. The Waves SSL is sweet
>>>>>>>>>> and didn't show it's quirky display problem that shut the
>>>>>>>>>> transport down in my old comp. There is a driver update
>>>>>>>>>> for some video cards because of it.
>>>>>>>>>>

>>>>>>>>>>> I am going back at it and will try to make it quit from
>>>>>>>>>>> abuse again only this time with as many SIRs as I can get
>>>>>>>>>>> going as inserts. This should be fun!
>>>>>>>>>>>
>>>>>>>>>>> I'll post back.
>>>>>>>>>>> Tom
>>>>>>>>>>>
>>>>>>>>>>>
>>>>>>>>>>>
>>>>>>>>>>> "Kerry Galloway" <kg@kerrygalloway.com> wrote in message
>>>>>>>>>>> news:C57ECC48.C1AF%kg@kerrygalloway.com...
>>>>>>>>>>> Huge news, Tom - congratulations, and thanks for
>>>>>>>>>>> trailblazing for everyone!
>>>>>>>>>>> I'll be watching the process with extreme interest - my
>>>>>>>>>>> production buddy is
>>>>>>>>>>> all PC and he wants to have a pretty brawny computer in the
>>>>>>>>>>> studio, so this
>>>>>>>>>>> couldn't have come at a better time for me.
>>>>>>>>>>>
>>>>>>>>>>> Mike, looks like you hit it out of the park.
>>>>>>>>>>>
>>>>>>>>>>> - K
>>>>>>>>>>>
>>>>>>>>>>>
>>>>>>>>>>> On 12/29/08 2:06 PM, in article 49594d55@linux, "Tom Bruhl"
>>>>>>>>>>> <arpeggio@comcast.net> wrote:
>>>>>>>>>>>
>>>>>>>>>>> Well everyone, Mike has saved the day by updating the
>>>>>>>>>>> PSCL for me in particular. I was receiving a new error
>>>>>>>>>>> never seen before. After more than a few trys Mike seems
>>>>>>>>>>> to have nailed it. Again no funny workarounds with XP Pro,
>>>>>>>>>>> 2 mecs, 5 eds, Magma, UAD-2, Quadcore, etc..
>>>>>>>>>>>
>>>>>>>>>>> I will continue loading plugins then finally add the
>>>>>>>>>>> Creamware card.
>>>>>>>>>>>
>>>>>>>>>>> 1 EDS card is sharing with video, USB controllers and a few
>>>>>>>>>>> other
>>>>>>>>>>> less important things. Not a glitch in operation and the
>>>>>>>>>>> beast is smooth
>>>>>>>>>>> and stable. Config in Paris is 64, 160, 210,000. I know,
>>>>>>>>>>> weird but
>>>>>>>>>>> not an error in sight and that's dragging 10 tracks in time
>>>>>>>>>>> all over the
>>>>>>>>>>> editor and dropping them whereva... while it's playing 24
>>>>>>>>>>> tracks with edits.
>>>>>>>>>>> The gui is displaying at the sample level on 4 submixes
>>>>>>>>>>> too.

Subject: Re: Grunt Test #1

Posted by [Deej \[5\]](#) on Thu, 22 Jan 2009 01:46:39 GMT

[View Forum Message](#) <> [Reply to Message](#)

I have lost the will to go any further.

>>> This is week five of tweaking.

>>>

Maybe it's the Magma

>>> and PCI bus? I've spent more money than I wanted to to begin with.

>>>

>>> Tom

Tom,

I'm sorry to see this grind to a halt. I think the issue is definitely the Magma. I run two Magmas in my rig for just this reason. Even when I was using a PCI board I did this. I have tried to run combinations of PCI cards in Magmas many different configurations. One thing I found out was that when you start mixing dissimilar devices in the slots, a bottleneck of some sort is created. I would imagine that this is some IRQ sorting issue, even if the IRQ assignments aren't apparently in conflict. Perhaps in office machines, this wouldn't be obvious, but in a hotrodded DAW, there is more demand on the bussing. Right now I've got two 13 slot Magmas hanging off my DAW. One of them has the PCIe>PCI adapter and is interfacing with a PCIe slot on the DAW. the other Magma is hanging off PCI#1. PCI#2 is pretty worthless for sharing on that particular mobo. I found it to be problematic no matter what the configuration I was doing with the other slots. Adding a second Magma to your inventory there "might" solve your problem. It will need to be one that can use the PCIe adapter host card. If you decide to make this move, feel free to give me a call if you think I can help, or whatever. I'll be glad to give you a hand in whatever way. I know how frustrated you are right now. Been there bro.

Deej

Subject: Re: Grunt Test #1

Posted by [Tom Bruhl](#) on Thu, 22 Jan 2009 06:16:48 GMT

[View Forum Message](#) <> [Reply to Message](#)

Ok,

New Bios, Windows is happy.

I seem to be. This sucks.

Paris is about to be loaded as the EDS cards have taken their appropriate IRQs with the chosen Audet drivers.

If there is a way I will make this happen.

Tom

"Deej" <noway@jose.net> wrote in message news:4977c1ef\$1@linux...

>
> I have lost the will to go any further.
>>>> This is week five of tweaking.
>>>>
> Maybe it's the Magma
>>>> and PCI bus? I've spent more money than I wanted to to begin with.
>>>>
>>>> Tom
>
> Tom,
>
> I'm sorry to see this grind to a halt. I think the issue is definitely the
> Magma. I run two Magmas in my rig for just this reason. Even when I was
> using
> a PCI board I did this. I have tried to run combinations of PCI cards in
> Magmas many different configurations. One thing I found out was that when
> you start mixing dissimilar devices in the slots, a bottleneck of some
> sort
> is created. I would imagine that this is some IRQ sorting issue, even if
> the IRQ assignments aren't apparently in conflict. Perhaps in office
> machines,
> this wouldn't be obvious, but in a hotrodded DAW, there is more demand on
> the bussing. Right now I've got two 13 slot Magmas hanging off my DAW. One
> of them has the PCIe>PCI adapter and is interfacing with a PCIe slot on
> the
> DAW. the other Magma is hanging off PCI#1. PCI#2 is pretty worthless for
> sharing on that particular mobo. I found it to be problematic no matter
> what
> the configuration I was doing with the other slots. Adding a second Magma
> to your inventory there "might" solve your problem. It will need to be one
> that can use the PCIe adapter host card. If you decide to make this move,
> feel free to give me a call if you think I can help, or whatever. I'll be
> glad to give you a hand in whatever way. I know how frustrated you are
> right
> now. Been there bro.
>
> Deej
>
>
