
Subject: Paris down

Posted by [ronj_91602](#) on Wed, 23 Aug 2017 00:30:29 GMT

[View Forum Message](#) <> [Reply to Message](#)

I uploaded the new pace update and Paris will not open now I get a couple of Windows. Any help would be greatly appreciated.

File Attachments

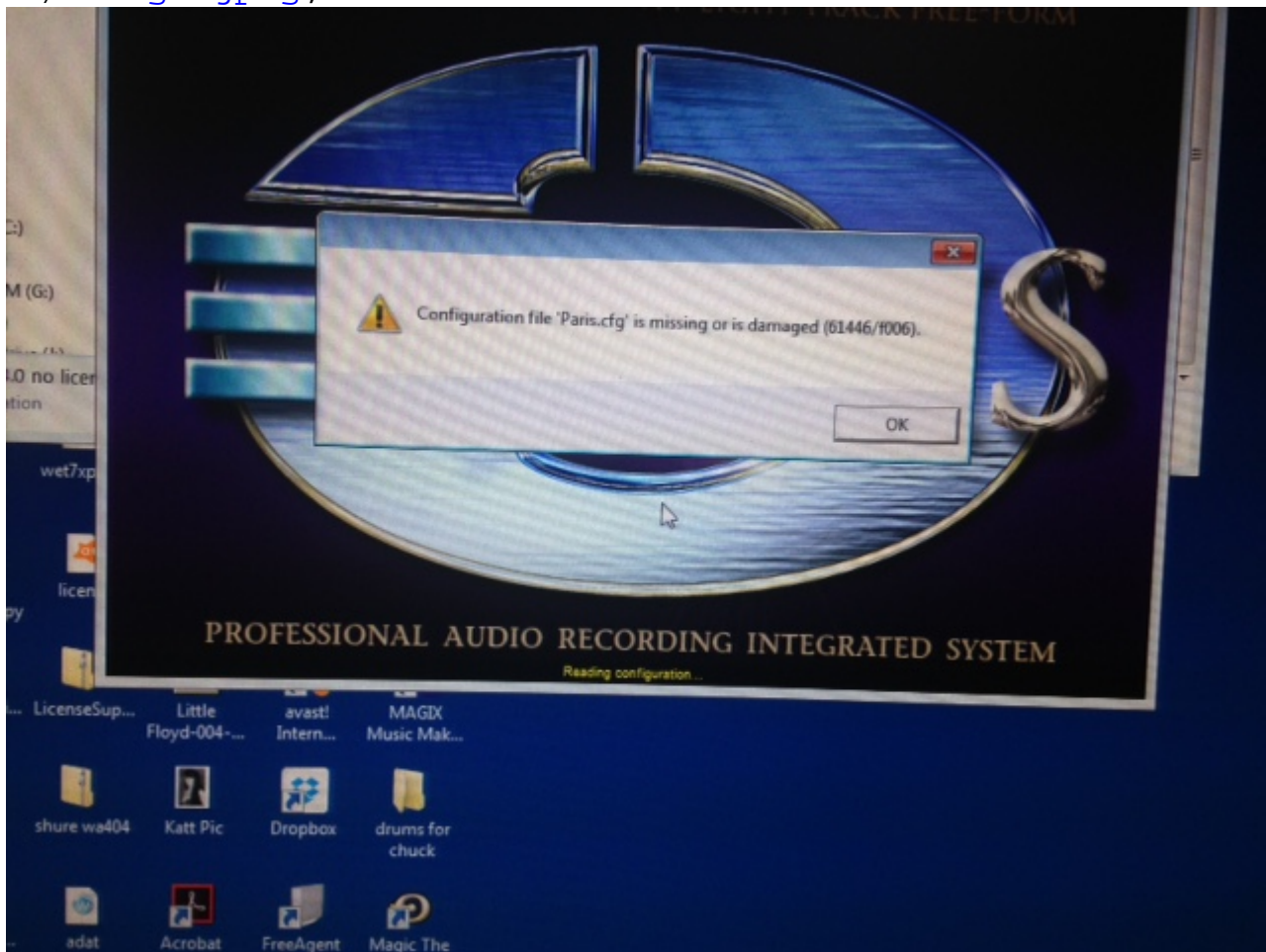
1) [image.jpeg](#), downloaded 575 times

Antares Al

isotope, In

ANTI TRAC K E R F E E F O

2) [image.jpeg](#), downloaded 472 times



Subject: Re: Paris down

Posted by [mikeaudet](#) on Sun, 26 Nov 2017 13:48:19 GMT

[View Forum Message](#) <> [Reply to Message](#)

Did we sort this out, Ron?

There is a default copy of the PARIS cfg in the PARIS Pro folder. Just copy and rename Paris Backup.cfg to Paris.cfg

I hope this helps.

Mike