
Subject: Re: 2 mecs, 3 eds1000 I need a little help
Posted by [Aaron Allen](#) on Thu, 19 Jan 2006 03:41:02 GMT
[View Forum Message](#) <> [Reply to Message](#)

Hook up ONE mec at a time. Find the master card, it won't initialize Paris software until you do, so it's a no brainer at that point. Then, put the other MEC that you want to add on the last EDS card in the food chain, card C. Make sure the word clock is going from master interface MEC to slave interface MEC (that's A to C). Some have subjected it may be more stable to add a BNC terminator on the last MEC in the chain - I don't use one and can't say I feel I've needed one, either. YMMV.

This is the rig I've been running a few years and it's been w/o any 7/7 or 18/12 or any other wierdness in finding hardware, excepting the adat/WinXP limitation of one adat card per MEC.

AA

"Kip Sonnier" <fender36@cox.net> wrote in message [news:43cf03be\\$1@linux...](mailto:news:43cf03be$1@linux...)

>
> Ok did away with the 442
>
> Got Black Mec which is my master to Card 2 (monitors out)
> Got Blue Mec to Card 1
> Paris Config to Master card A
> Gives me this
> Error initializing Engine. No interface was connected to master card
> so i unplugged one so i could change the Paris config Master Card
>
> When i switch Paris Config to Master card B, it boots up and in the patch
> bay the Black Mec which is on Card 2 shows up as Mec Module A and the Blue
> Mec which is on card 1 shows up as Mec Module B
> They both show Word clock on front of mecs
> Black shows 44.1 khz
> Blue shows 48.0 khz
>
> When i Hook Black Mec which is my master to Card 1 (monitors out)
> Got Blue Mec to Card 2
> Paris Config to Master card A
> Word Cables Hooked up
>
> and got this on the boot
> Error initializing Engine. Error code 7/7
>
> Anybody ?
>
>

Subject: 2 mecs, 3 eds1000 I need a little help
Posted by [Kip Sonnier](#) on Thu, 19 Jan 2006 04:13:02 GMT
[View Forum Message](#) <> [Reply to Message](#)

Ok did away with the 442

Got Black Mec which is my master to Card 2 (monitors out)
Got Blue Mec to Card 1
Paris Config to Master card A
Gives me this
Error initializing Engine. No interface was connected to master card
so i unplugged one so i could change the Paris config Master Card

When i switch Paris Config to Master card B, it boots up and in the patch
bay the Black Mec which is on Card 2 shows up as Mec Module A and the Blue
Mec which is on card 1 shows up as Mec Module B
They both show Word clock on front of mecs
Black shows 44.1 khz
Blue shows 48.0 khz

When i Hook Black Mec which is my master to Card 1 (monitors out)
Got Blue Mec to Card 2
Paris Config to Master card A
Word Cables Hooked up

and got this on the boot
Error initializing Engine. Error code 7/7

Anybody ?

Subject: Re: 2 mecs, 3 eds1000 I need a little help - Few words on
WORDCLOCK...
Posted by [Suad](#) on Thu, 19 Jan 2006 05:00:44 GMT
[View Forum Message](#) <> [Reply to Message](#)

Hello.

Actually, I have the same setup like yours.
Never had a single problem... (except that ATAT - XP stuff,,, ;-)

So, as A. Allen said, first locate the first EDS card simply by connecting
one mec into each card. If paris boots - that's a A card.
Now, connect wordclock USING T-ADAPTER(s), locate card B, connect
second MEC, and if you want 422 to card C.
....and of course, I suppose you did EDS interconections right. Did you?
....and MEC A led shows 44k and MEC B led shows 48k is a hardware bug.
If you sync them well, all will be at 44k, and belive me , you will HEAR

if MECs are working on different sample rates. ;-)

Wordclock connection theory :

"Word clock signals are usually distributed in the form of a network, split with BNC T-adapters and terminated with resistors. We recommend using off-the-shelf BNC cables to connect all devices, as this type of cable is used for most computer networks. You will find all the necessary components (T-adapters, terminators, cables) in most electronics and/or computer stores.

To avoid voltage loss and reflections, both the cable itself and the terminating resistor at the end of the chain should have an impedance of 75 Ohm. If the voltage is too low, synchronization will fail. High frequency reflection effects can cause both jitter and sync failure.

The last device in a wordclock chain should be terminated using a T-adaptor and a 75 Ohm resistor (available as short BNC plug). Of course devices with internal termination do not need T-adaptor and terminator plug. " - RME Audio

So, people are doing mistake when connecting wordclock out to in, and then another out to in of second device, then another out to in of third, fourth... xyz device. That way of connecting wordclock is raising jitter in the wordclock signal especially if device wordclock in and out aren't 100% in phase. (steady clock WC in/out of RME fireface is another story...)

Drawback of that method is weakening of wordclock signal in large networks, so termination makes things worse in that case...

Termination is case sensitive and it helps in some cases, but not in other cases.

When using large wordclock networks like mine, termination is bad idea...

I have 6 devices in my wordclock network WITHOUT termination.

With setup connected like that, I never have a single synchronization problem or click or dropout.

(2xMEC + 1xFireface + 1xTC M3000 + 2xRME 9652 - all connected in a network with

T-adapters + digital ins/outs and ADAT sync) .

To make things worse, my WC master MEC is not even at the end of the chain, but - it works flawlessly!

Lately I purchased another 2 MEC's and I'm planning to expand my system to 4 EDS cards and 4 MECs. That will be 8 devices in a wordclock network across about 10 meters of cable.... and I think it should work. If not, I'll use my RME fireface like WC signal refresher somewhere in the middle of the chain, and take benefit of RMEs "steady clock" technology.
Also, as I'am a tehnician, I have made all my cables by myself using HQ conectors, cable and silver soldering wire....

I know that's very complicated, but that's the way it is... ;-)

Here are some pics, so you better understand...

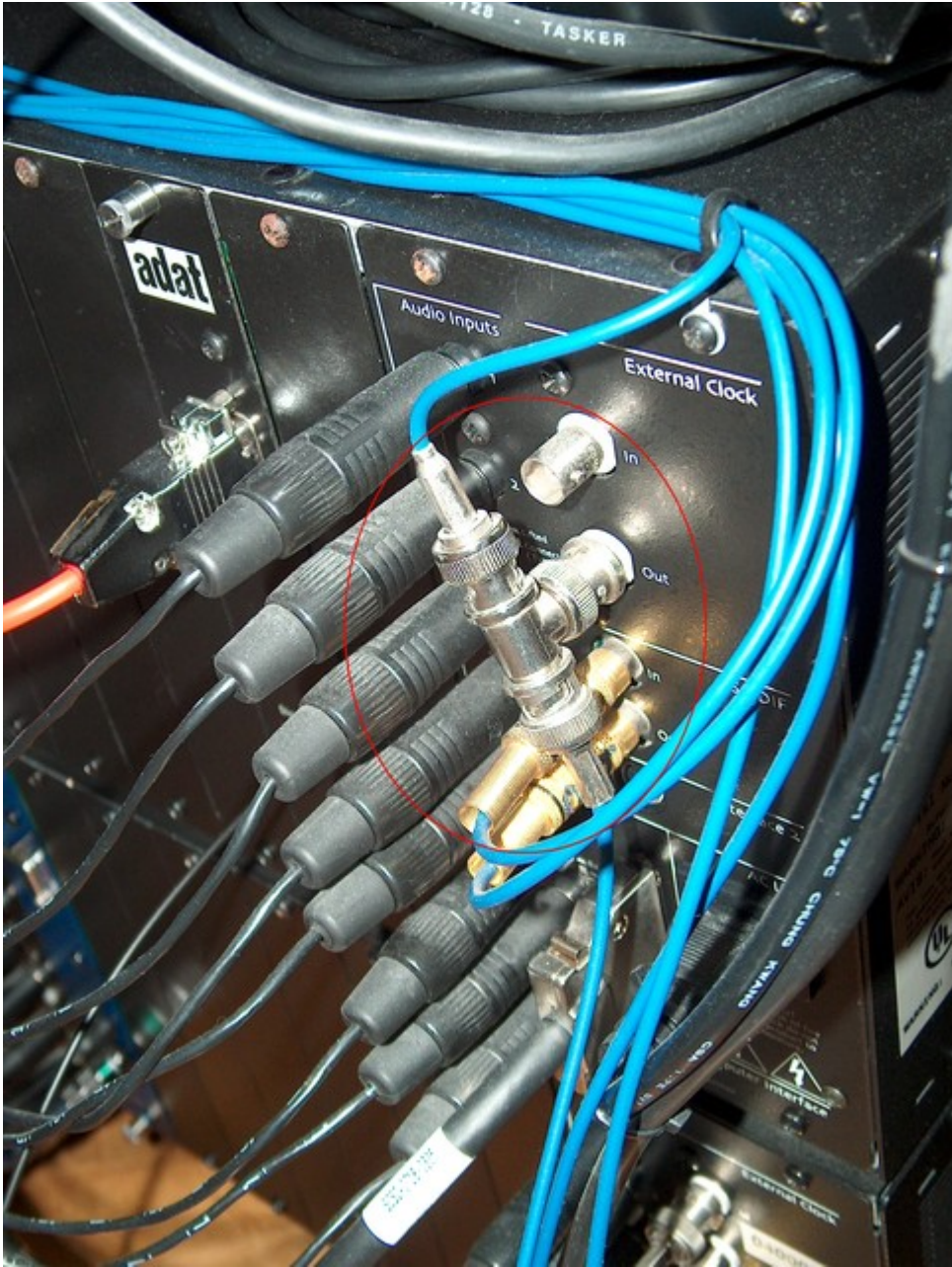
I hope this will help to many PARIS users.

Cheers.

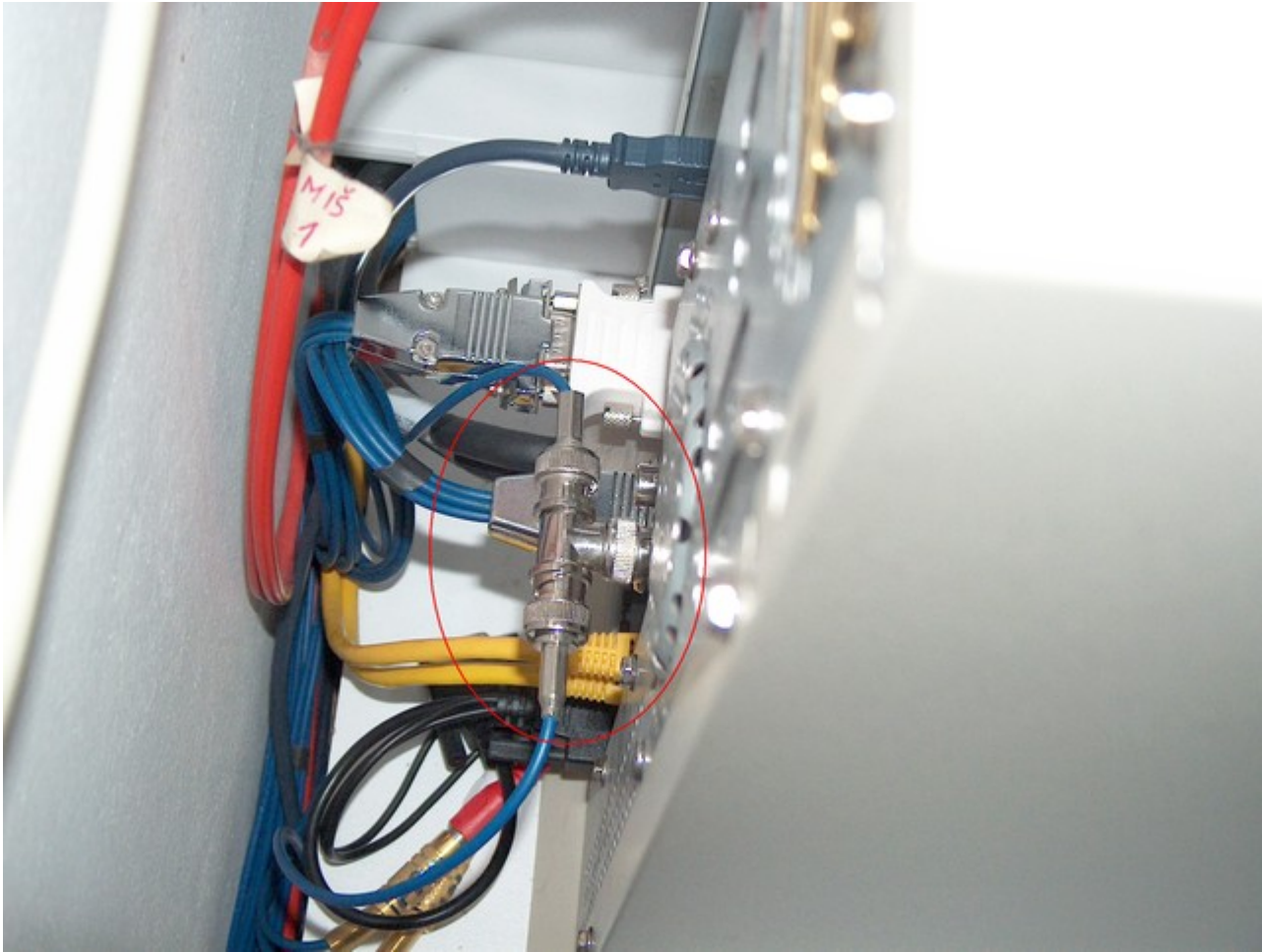
SUAD

File Attachments

1) [WC2.jpg](#), downloaded 60 times



2) [WC1.jpg](#), downloaded 61 times



Subject: Re: 2 mecs, 3 eds1000 I need a little help, found problem
Posted by [Aaron Allen](#) on Thu, 19 Jan 2006 06:41:03 GMT
[View Forum Message](#) <> [Reply to Message](#)

Kip,
My rig has one adat card in each MEC.. put them in the last position on the far right. I also have a 8 in and 8 out in my MEC A, and each MEC has an IF/2 on it as well.
AA

"Kip Sonnier" <fender36@cox.net> wrote in message [news:43cf3438\\$1@linux...](mailto:news:43cf3438$1@linux...)

>
> i took out the adat card from mec A so far so good
>
> Thanks Aaron

>
>
> "Aaron Allen" <nospam@not_here.dude> wrote:
>>Hook up ONE mec at a time. Find the master card, it won't initialize Paris

>
>>software until you do, so it's a no brainer at that point. Then, put the
>
>>other MEC that you want to add on the last EDS card in the food chain,
>>card
>
>>C. Make sure the word clock is going from master interface MEC to slave
>
>>interface MEC (that's A to C). Some have subjected it may be more stable
> to
>>add a BNC terminator on the last MEC in the chain - I don't use one and
>
>>can't say I feel I've needed one, either. YMMV.
>>
>>This is the rig I've been running a few years and it's been w/o any 7/7
> or
>>18/12 or any other wierdness in finding hardware, excepting the
>>adat/WinXP
>
>>limitation of one adat card per MEC.
>>
>>AA
>>
>>
>>"Kip Sonnier" <fender36@cox.net> wrote in message news:43cf03be\$1@linux...
>>>
>>> Ok did away with the 442
>>>
>>> Got Black Mec which is my master to Card 2 (monitors out)
>>> Got Blue Mec to Card 1
>>> Paris Config to Master card A
>>> Gives me this
>>> Error initializing Engine. No interface was connected to master card
>>> so i unplugged one so i could change the Paris config Master Card
>>>
>>> When i switch Paris Config to Master card B, it boots up and in the
>>> patch
>>> bay the Black Mec which is on Card 2 shows up as Mec Module A and the
> Blue
>>> Mec which is on card 1 shows up as Mec Module B
>>> They both show Word clock on front of mecs
>>> Black shows 44.1 khz
>>> Blue shows 48.0 khz
>>>
>>> When i Hook Black Mec which is my master to Card 1 (monitors out)
>>> Got Blue Mec to Card 2
>>> Paris Config to Master card A
>>> Word Cables Hooked up

>>>
>>> and got this on the boot
>>> Error initializing Engine. Error code 7/7
>>>
>>> Anybody ?
>>>
>>>
>>
>>
>

Subject: Re: Hey Aaron "one more thing"
Posted by [Aaron Allen](#) on Thu, 19 Jan 2006 07:26:19 GMT
[View Forum Message](#) <> [Reply to Message](#)

That's a known bug. The light is 'wrong' on any slave MEC units, and should be ignored. Here's a pic of my setup from the front so you can see at a glance how my functional expansion cards are set up.

AA

"Kip Sonnier" <fender36@cox.net> wrote in message news:43cf3ec2@linux...

>
> My Black Mec which is Master Mec A stays on 44.1khz
> My Blue Mec B is on 48.khz
> They both set on word clock
>
> I'm i missing something here?
>
> "Aaron Allen" <nospam@not_here.dude> wrote:
>>Kip,
>>My rig has one adat card in each MEC.. put them in the last position on
> the
>>far right. I also have a 8 in and 8 out in my MEC A, and each MEC has an
>
>>IF/2 on it as well.
>>AA

>>
>>"Kip Sonnier" <fender36@cox.net> wrote in message [news:43cf3438\\$1@linux...](mailto:news:43cf3438$1@linux...)

>>>
>>> i took out the adat card from mec A so far so good
>>>
>>> Thanks Aaron
>>>
>>>
>>> "Aaron Allen" <nospam@not_here.dude> wrote:

>>>>Hook up ONE mec at a time. Find the master card, it won't initialize
>>>>Paris
>>>
>>>>software until you do, so it's a no brainer at that point. Then, put the
>>>
>>>>other MEC that you want to add on the last EDS card in the food chain,
>
>>>>card
>>>
>>>>C. Make sure the word clock is going from master interface MEC to slave
>>>
>>>>interface MEC (that's A to C). Some have subjected it may be more stable
>>> to
>>>>add a BNC terminator on the last MEC in the chain - I don't use one and
>>>
>>>>can't say I feel I've needed one, either. YMMV.
>>>>
>>>>This is the rig I've been running a few years and it's been w/o any 7/7
>>> or
>>>>18/12 or any other wierdness in finding hardware, excepting the
>>>>adat/WinXP
>>>
>>>>limitation of one adat card per MEC.
>>>>
>>>>AA
>>>>
>>>>
>>>>"Kip Sonnier" <fender36@cox.net> wrote in message
>>>>news:43cf03be\$1@linux...
>>>>>
>>>>> Ok did away with the 442
>>>>>
>>>>> Got Black Mec which is my master to Card 2 (monitors out)
>>>>> Got Blue Mec to Card 1
>>>>> Paris Config to Master card A
>>>>> Gives me this
>>>>> Error initializing Engine. No interface was connected to master card
>>>>> so i unplugged one so i could change the Paris config Master Card
>>>>>
>>>>> When i switch Paris Config to Master card B, it boots up and in the
>
>>>>> patch
>>>>> buy the Black Mec which is on Card 2 shows up as Mec Module A and the
>>> Blue
>>>>> Mec which is on card 1 shows up as Mec Module B
>>>>> They both show Word clock on front of mecs
>>>>> Black shows 44.1 khz
>>>>> Blue shows 48.0 khz

>>>>>
>>>>> When i Hook Black Mec which is my master to Card 1 (monitors out)
>>>>> Got Blue Mec to Card 2
>>>>> Paris Config to Master card A
>>>>> Word Cables Hooked up
>>>>>
>>>>> and got this on the boot
>>>>> Error initializing Engine. Error code 7/7
>>>>>
>>>>> Anybody ?
>>>>>
>>>>>
>>>>
>>>>
>>>>
>>>
>>
>>
>

File Attachments

1) [4_kip.JPG](#), downloaded 53 times



Subject: Re: 2 mecs, 3 eds1000 I need a little help, found problem
Posted by [Kip Sonnier](#) on Thu, 19 Jan 2006 07:39:52 GMT
[View Forum Message](#) <> [Reply to Message](#)

i took out the adat card from mec A so far so good

Thanks Aaron

"Aaron Allen" <nospam@not_here.dude> wrote:

>Hook up ONE mec at a time. Find the master card, it won't initialize Paris

>software until you do, so it's a no brainer at that point. Then, put the

>other MEC that you want to add on the last EDS card in the food chain, card

>C. Make sure the word clock is going from master interface MEC to slave

>interface MEC (that's A to C). Some have subjected it may be more stable
to

>add a BNC terminator on the last MEC in the chain - I don't use one and

>can't say I feel I've needed one, either. YMMV.

>

>This is the rig I've been running a few years and it's been w/o any 7/7

or

>18/12 or any other wierdness in finding hardware, excepting the adat/WinXP

>limitation of one adat card per MEC.

>

>AA

>

>

>"Kip Sonnier" <fender36@cox.net> wrote in message news:43cf03be\$1@linux...

>>

>> Ok did away with the 442

>>

>> Got Black Mec which is my master to Card 2 (monitors out)

>> Got Blue Mec to Card 1

>> Paris Config to Master card A

>> Gives me this

>> Error initializing Engine. No interface was connected to master card

>> so i unplugged one so i could change the Paris config Master Card

>>

>> When i switch Paris Config to Master card B, it boots up and in the patch

>> bay the Black Mec which is on Card 2 shows up as Mec Module A and the
Blue

>> Mec which is on card 1 shows up as Mec Module B

>> They both show Word clock on front of mecs

>> Black shows 44.1 khz
>> Blue shows 48.0 khz
>>
>> When i Hook Black Mec which is my master to Card 1 (monitors out)
>> Got Blue Mec to Card 2
>> Paris Config to Master card A
>> Word Cables Hooked up
>>
>> and got this on the boot
>> Error initializing Engine. Error code 7/7
>>
>> Anybody ?
>>
>>
>
>

Subject: Re: Hey Aaron "one more thing"
Posted by [Aaron Allen](#) on Thu, 19 Jan 2006 08:02:26 GMT
[View Forum Message](#) <> [Reply to Message](#)

No, in fact while your putting together the rig I'd leave the config file alone completely opting for stock. Once you have it all working, then you can look at tweaks but you'll not ever need the house sync line unless you are using an external word clock.
AA

"Kip Sonnier" <fender36@cox.net> wrote in message [news:43cf4045\\$1@linux...](news:43cf4045$1@linux...)
>
> "Kip Sonnier" <fender36@cox.net> wrote:
>>
> Should i have UseHouseSync=1 in my paris cfg.?
> because when i put that, it tells me
> No interface connected to master card
>
>>My Black Mec which is Master Mec A stays on 44.1khz
>>My Blue Mec B is on 48.khz
>>They both set on word clock
>
>>
>>I'm i missing something here?
>>
>>"Aaron Allen" <nospam@not_here.dude> wrote:
>>>Kip,
>>>My rig has one adat card in each MEC.. put them in the last position on
>>the

>>>far right. I also have a 8 in and 8 out in my MEC A, and each MEC has an
>>
>>>IF/2 on it as well.
>>>AA
>>>
>>>"Kip Sonnier" <fender36@cox.net> wrote in message
>>>news:43cf3438\$1@linux...
>>>>
>>>> i took out the adat card from mec A so far so good
>>>>
>>>> Thanks Aaron
>>>>
>>>>
>>>> "Aaron Allen" <nospam@not_here.dude> wrote:
>>>>>Hook up ONE mec at a time. Find the master card, it won't initialize
> Paris
>>>>
>>>>>software until you do, so it's a no brainer at that point. Then, put
> the
>>>>
>>>>>other MEC that you want to add on the last EDS card in the food chain,
>>
>>>>>card
>>>>
>>>>>C. Make sure the word clock is going from master interface MEC to slave
>>>>
>>>>>interface MEC (that's A to C). Some have subjected it may be more
>>>>>stable
>>>> to
>>>>>add a BNC terminator on the last MEC in the chain - I don't use one and
>>>>
>>>>>can't say I feel I've needed one, either. YMMV.
>>>>>
>>>>>This is the rig I've been running a few years and it's been w/o any 7/7
>>>> or
>>>>>18/12 or any other wierdness in finding hardware, _excepting_ the
>>>>>adat/WinXP
>>>>
>>>>>limitation of one adat card per MEC.
>>>>>
>>>>>AA
>>>>>
>>>>>
>>>>>"Kip Sonnier" <fender36@cox.net> wrote in message
>>>>>news:43cf03be\$1@linux...
>>>>>>
>>>>>> Ok did away with the 442
>>>>>>

>>>>> Got Black Mec which is my master to Card 2 (monitors out)
>>>>> Got Blue Mec to Card 1
>>>>> Paris Config to Master card A
>>>>> Gives me this
>>>>> Error initializing Engine. No interface was connected to master card
>>>>> so i unplugged one so i could change the Paris config Master Card
>>>>>
>>>>> When i switch Paris Config to Master card B, it boots up and in the
>>
>>>>> patch
>>>>> buy the Black Mec which is on Card 2 shows up as Mec Module A and the
>>> Blue
>>>>> Mec which is on card 1 shows up as Mec Module B
>>>>> They both show Word clock on front of mecs
>>>>> Black shows 44.1 khz
>>>>> Blue shows 48.0 khz
>>>>>
>>>>> When i Hook Black Mec which is my master to Card 1 (monitors out)
>>>>> Got Blue Mec to Card 2
>>>>> Paris Config to Master card A
>>>>> Word Cables Hooked up
>>>>>
>>>>> and got this on the boot
>>>>> Error initializing Engine. Error code 7/7
>>>>>
>>>>> Anybody ?
>>>>>
>>>>>
>>>>
>>>>
>>>>
>>>>
>>>
>>>
>>
>>
>>
>>
>

Subject: Hey Aaron "one more thing"
Posted by [Kip Sonnier](#) on Thu, 19 Jan 2006 08:24:50 GMT
[View Forum Message](#) <> [Reply to Message](#)

My Black Mec which is Master Mec A stays on 44.1khz
My Blue Mec B is on 48.khz
They both set on word clock

I'm i missing something here?

"Aaron Allen" <nospam@not_here.dude> wrote:

>Kip,
>My rig has one adat card in each MEC.. put them in the last position on
the
>far right. I also have a 8 in and 8 out in my MEC A, and each MEC has an

>IF/2 on it as well.
>AA
>
>"Kip Sonnier" <fender36@cox.net> wrote in message news:43cf3438\$1@linux...
>>
>> i took out the adat card from mec A so far so good
>>
>> Thanks Aaron
>>
>>
>> "Aaron Allen" <nospam@not_here.dude> wrote:
>>>Hook up ONE mec at a time. Find the master card, it won't initialize Paris
>>
>>>software until you do, so it's a no brainer at that point. Then, put the
>>
>>>other MEC that you want to add on the last EDS card in the food chain,

>>>card
>>
>>>C. Make sure the word clock is going from master interface MEC to slave
>>
>>>interface MEC (that's A to C). Some have subjected it may be more stable
>> to
>>>add a BNC terminator on the last MEC in the chain - I don't use one and
>>
>>>can't say I feel I've needed one, either. YMMV.
>>>
>>>This is the rig I've been running a few years and it's been w/o any 7/7
>> or
>>>18/12 or any other wierdness in finding hardware, excepting the
>>>adat/WinXP
>>
>>>limitation of one adat card per MEC.
>>>
>>>AA
>>>
>>>
>>>"Kip Sonnier" <fender36@cox.net> wrote in message news:43cf03be\$1@linux...
>>>>
>>>> Ok did away with the 442
>>>>
>>>> Got Black Mec which is my master to Card 2 (monitors out)
>>>> Got Blue Mec to Card 1

>>>> Paris Config to Master card A
>>>> Gives me this
>>>> Error initializing Engine. No interface was connected to master card
>>>> so i unplugged one so i could change the Paris config Master Card
>>>>
>>>> When i switch Paris Config to Master card B, it boots up and in the

>>>> patch
>>>> bay the Black Mec which is on Card 2 shows up as Mec Module A and the
>> Blue
>>>> Mec which is on card 1 shows up as Mec Module B
>>>> They both show Word clock on front of mecs
>>>> Black shows 44.1 khz
>>>> Blue shows 48.0 khz
>>>>
>>>> When i Hook Black Mec which is my master to Card 1 (monitors out)
>>>> Got Blue Mec to Card 2
>>>> Paris Config to Master card A
>>>> Word Cables Hooked up
>>>>
>>>> and got this on the boot
>>>> Error initializing Engine. Error code 7/7
>>>>
>>>> Anybody ?
>>>>
>>>>
>>>
>>>
>>
>
>

Subject: Re: Hey Aaron "one more thing"
Posted by [Kip Sonnier](#) on Thu, 19 Jan 2006 08:31:17 GMT
[View Forum Message](#) <> [Reply to Message](#)

"Kip Sonnier" <fender36@cox.net> wrote:

>
> Should i have UseHouseSync=1 in my paris cfg.?
> because when i put that, it tells me
> No interface connected to master card

>My Black Mec which is Master Mec A stays on 44.1khz
>My Blue Mec B is on 48.khz
>They both set on word clock

>

>I'm i missing something here?
>
>"Aaron Allen" <nospam@not_here.dude> wrote:
>>Kip,
>>My rig has one adat card in each MEC.. put them in the last position on
>the
>>far right. I also have a 8 in and 8 out in my MEC A, and each MEC has an
>
>>IF/2 on it as well.
>>AA
>>
>>"Kip Sonnier" <fender36@cox.net> wrote in message news:43cf3438\$1@linux...
>>>
>>> i took out the adat card from mec A so far so good
>>>
>>> Thanks Aaron
>>>
>>>
>>> "Aaron Allen" <nospam@not_here.dude> wrote:
>>>>Hook up ONE mec at a time. Find the master card, it won't initialize
Paris
>>>>
>>>>software until you do, so it's a no brainer at that point. Then, put
the
>>>>
>>>>other MEC that you want to add on the last EDS card in the food chain,
>
>>>>card
>>>>
>>>>C. Make sure the word clock is going from master interface MEC to slave
>>>>
>>>>interface MEC (that's A to C). Some have subjected it may be more stable
>>>> to
>>>>add a BNC terminator on the last MEC in the chain - I don't use one and
>>>>
>>>>can't say I feel I've needed one, either. YMMV.
>>>>
>>>>This is the rig I've been running a few years and it's been w/o any 7/7
>>>> or
>>>>18/12 or any other wierdness in finding hardware, excepting the
>>>>adat/WinXP
>>>>
>>>>limitation of one adat card per MEC.
>>>>
>>>>AA
>>>>
>>>>
>>>>"Kip Sonnier" <fender36@cox.net> wrote in message news:43cf03be\$1@linux...

```

>>>>
>>>> Ok did away with the 442
>>>>
>>>> Got Black Mec which is my master to Card 2 (monitors out)
>>>> Got Blue Mec to Card 1
>>>> Paris Config to Master card A
>>>> Gives me this
>>>> Error initializing Engine. No interface was connected to master card
>>>> so i unplugged one so i could change the Paris config Master Card
>>>>
>>>> When i switch Paris Config to Master card B, it boots up and in the
>
>>>> patch
>>>> bay the Black Mec which is on Card 2 shows up as Mec Module A and the
>>> Blue
>>>> Mec which is on card 1 shows up as Mec Module B
>>>> They both show Word clock on front of mecs
>>>> Black shows 44.1 khz
>>>> Blue shows 48.0 khz
>>>>
>>>> When i Hook Black Mec which is my master to Card 1 (monitors out)
>>>> Got Blue Mec to Card 2
>>>> Paris Config to Master card A
>>>> Word Cables Hooked up
>>>>
>>>> and got this on the boot
>>>> Error initializing Engine. Error code 7/7
>>>>
>>>> Anybody ?
>>>>
>>>>
>>>>
>>>>
>>>>
>>>>
>>>>
>>>>
>>>>
>>>>
>>>>
>>>>
>>>>
>

```

Subject: Thanks Aaron, You've been a big help!!!!
 Posted by [Kip Sonnier](#) on Thu, 19 Jan 2006 08:34:39 GMT
[View Forum Message](#) <> [Reply to Message](#)

"Aaron Allen" <nospam@not_here.dude> wrote:
 >That's a known bug. The light is 'wrong' on any slave MEC units, and should
 >be ignored. Here's a pic of my setup from the front so you can see at a

>glance how my functional expansion cards are set up.
>
>AA
>
>
>"Kip Sonnier" <fender36@cox.net> wrote in message news:43cf3ec2@linux...
>>
>> My Black Mec which is Master Mec A stays on 44.1khz
>> My Blue Mec B is on 48.khz
>> They both set on word clock
>>
>> I'm i missing something here?
>>
>> "Aaron Allen" <nospam@not_here.dude> wrote:
>>>Kip,
>>>My rig has one adat card in each MEC.. put them in the last position on
>> the
>>>far right. I also have a 8 in and 8 out in my MEC A, and each MEC has
an
>>
>>>IF/2 on it as well.
>>>AA
>>>
>>>"Kip Sonnier" <fender36@cox.net> wrote in message news:43cf3438\$1@linux...
>>>>
>>>> i took out the adat card from mec A so far so good
>>>>
>>>> Thanks Aaron
>>>>
>>>>
>>>> "Aaron Allen" <nospam@not_here.dude> wrote:
>>>>>Hook up ONE mec at a time. Find the master card, it won't initialize

>>>>>Paris
>>>>>
>>>>>software until you do, so it's a no brainer at that point. Then, put
the
>>>>>
>>>>>other MEC that you want to add on the last EDS card in the food chain,
>>
>>>>>card
>>>>>
>>>>>C. Make sure the word clock is going from master interface MEC to slave
>>>>>
>>>>>interface MEC (that's A to C). Some have subjected it may be more stable
>>>>> to
>>>>>add a BNC terminator on the last MEC in the chain - I don't use one
and

>>>>
>>>>>can't say I feel I've needed one, either. YMMV.
>>>>>
>>>>>This is the rig I've been running a few years and it's been w/o any
7/7
>>>> or
>>>>>18/12 or any other wierdness in finding hardware, _excepting_ the
>>>>>adat/WinXP
>>>>>
>>>>>limitation of one adat card per MEC.
>>>>>
>>>>>AA
>>>>>
>>>>>
>>>>>"Kip Sonnier" <fender36@cox.net> wrote in message
>>>>>news:43cf03be\$1@linux...
>>>>>>
>>>>>> Ok did away with the 442
>>>>>>
>>>>>> Got Black Mec which is my master to Card 2 (monitors out)
>>>>>> Got Blue Mec to Card 1
>>>>>> Paris Config to Master card A
>>>>>> Gives me this
>>>>>> Error initializing Engine. No interface was connected to master card
>>>>>> so i unplugged one so i could change the Paris config Master Card
>>>>>>
>>>>>> When i switch Paris Config to Master card B, it boots up and in the
>>
>>>>>> patch
>>>>>> bay the Black Mec which is on Card 2 shows up as Mec Module A and
the
>>>> Blue
>>>>>> Mec which is on card 1 shows up as Mec Module B
>>>>>> They both show Word clock on front of mecs
>>>>>> Black shows 44.1 khz
>>>>>> Blue shows 48.0 khz
>>>>>>
>>>>>> When i Hook Black Mec which is my master to Card 1 (monitors out)
>>>>>> Got Blue Mec to Card 2
>>>>>> Paris Config to Master card A
>>>>>> Word Cables Hooked up
>>>>>>
>>>>>> and got this on the boot
>>>>>> Error initializing Engine. Error code 7/7
>>>>>>
>>>>>> Anybody ?
>>>>>>
>>>>>>

>>>>>
>>>>>
>>>>
>>>
>>>
>>>
>>
>
>
>
