

---

Subject: Two questions regarding the Now Line and actual position

Posted by [Don Solaris](#) on Wed, 28 Mar 2012 00:09:53 GMT

[View Forum Message](#) <> [Reply to Message](#)

---

I use external sequencer where everything is in bars/beats so, I've enabled the Bars-Beats ruler because I assumed it would make things easier. But here's the problem. I wanted to go to position 3-1-000 (beginning of bar 3), however when I move along the ruler by holding the shift, movement is being snap to the 2-4-959 instead of 3-1-000

I wonder is this a bug? Because to me it makes no sense, since i've enabled the grid. Now, the first beat of the third bar is 3-1-000. Why is the "Now Line" being snapped to 2-4-959 instead?

Ok so i assumed this was a bug. So i went to manual location input. Here is exactly what I typed in:

Yet here is where the "Now Line" actually went:

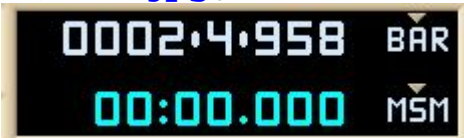
Is this a bug as well?

Maybe i'm just doing something wrong.

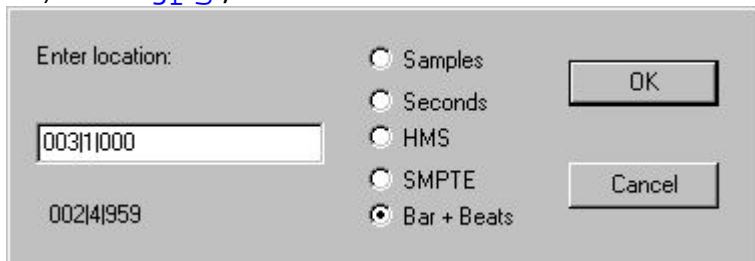
---

### File Attachments

1) [03.jpg](#), downloaded 295 times



2) [02.jpg](#), downloaded 289 times



3) [01.jpg](#), downloaded 328 times



---

Subject: Re: Two questions regarding the Now Line and actual position

Posted by [kerryg](#) on Wed, 28 Mar 2012 00:17:01 GMT

[View Forum Message](#) <> [Reply to Message](#)

---

Yep, more or less a bug - a known issue anyway. The "bar grid" has about eighty samples of "slop" - this was somehow related to allowing PARIS to play back files of different bit depths in the same session. Here's some more info from Edmund.

---

Subject: Re: Two questions regarding the Now Line and actual position

Posted by [Don Solaris](#) on Wed, 28 Mar 2012 07:38:30 GMT

[View Forum Message](#) <> [Reply to Message](#)

---

Thank you Kerry for the explanation.