

---

Subject: Izotope Ozone 4.03b GUI

Posted by [Wayne](#) on Fri, 18 Mar 2011 22:46:26 GMT

[View Forum Message](#) <> [Reply to Message](#)

---

Hi all,

I purchased Ozone 4 and it works fine as a Native insert although it is CPU heavy on 40 of the 150 presets. Way up around 80-90% CPU load. The rest between 20-40%. I've loaded six mono instances of the lower value plugs. Only one instance possible on the heavy plugs, but with Ted's help I was able to select stereo on the insert and it applies the plug to the next adjacent channel so I am able to master a stereo pair.

My question is that in Paris I get an extra area on the plug in GUI which I don't get in Sonar. It's the tan/brown area with the 11 buttons. None of the buttons work except the bypass, but the main screen has a bypass that does the same thing. Anyone else using Ozone 4 with Paris? . . . and have the same issue?

Also I noticed that Ozone only uses one of the two CPU stems of my duo-core. I only see it hitting on the 2nd CPU. Just curious on this.

I contacted Izotope tech support concerning the tan/brown GUI issue and they are curious and I'm waiting for a repair response if applicable.

The plug is usable but a monitor real estate hog because of the unused tan/brown area of the plug.

I've attached a screen shot of the plug. What do you guys think? Am I the only one with the problem?

I'm running Win XP SP2 multi-core with Mike Audet's drivers, 1 MEC, 2-8ins and 2-EDS cards.

Wayne

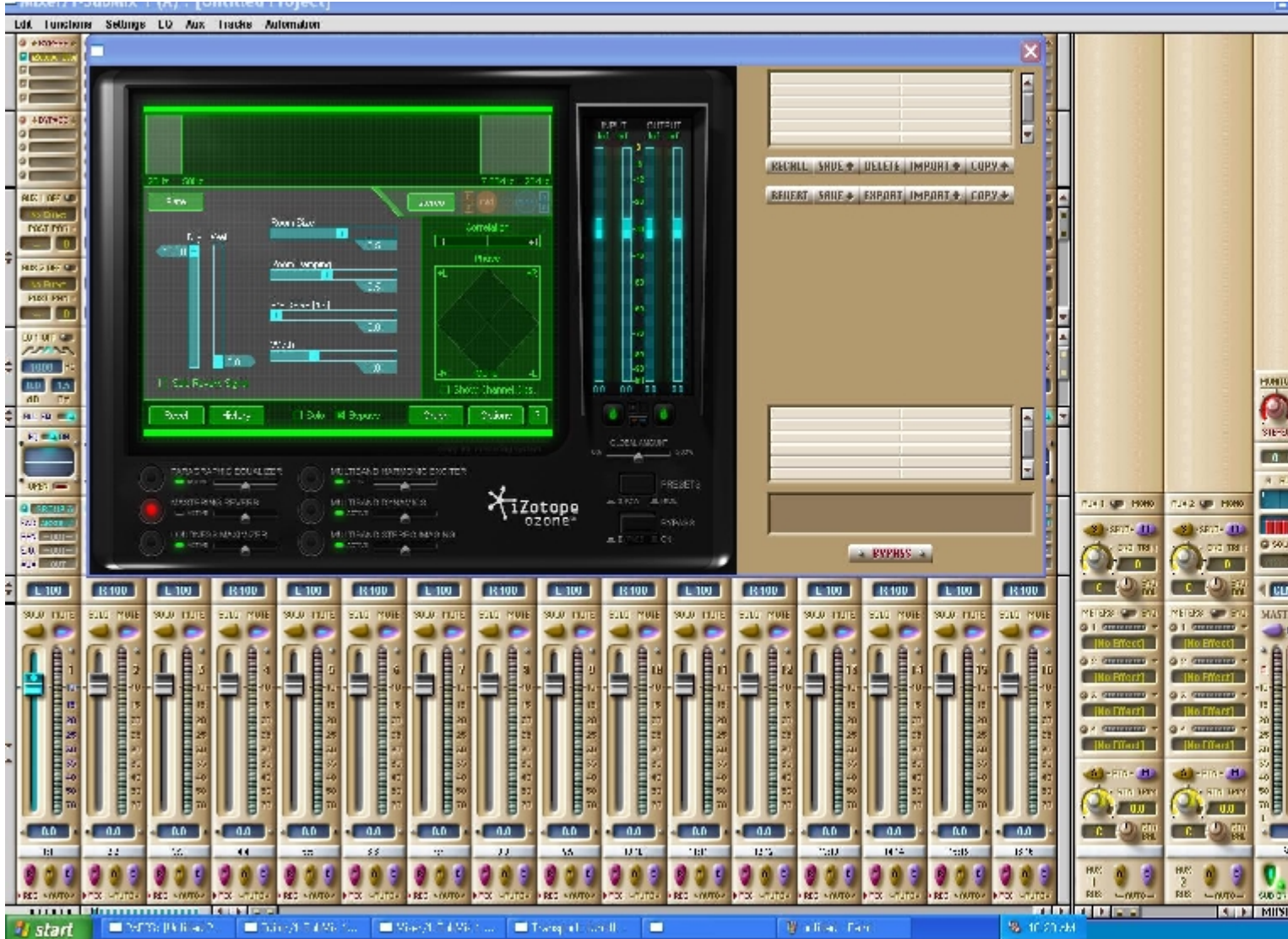
---

## File Attachments

1) [Screen shot Ozone 4.jpg](#), downloaded 143 times



2) Screen shot zOzone 4 all screen.jpg, downloaded 139 times



---

Subject: Re: Izotope Ozone 4.03b GUI

Posted by [Ted Gerber](#) on Sat, 19 Mar 2011 03:25:44 GMT

[View Forum Message](#) <> [Reply to Message](#)

---

This is the way Paris handles all Native Inserts, allowing you to save your own settings back at a time when not every plugin came with that feature.

If you use FXpansion wrapper FFX4 Chainer and select that first, then load the plugs through that GUI, you are able to prescribe the window size for each of the plugs.

Using the FFX4 Chainer has a procedure though, and another Parisite got it going for me, so I'm not an expert. Check through Dimitrios' posts.

Also not sure if Ozone 4 plays well within FFX4 chainer, it should though.

And - there's another piece of software that will scan plugs as you install them, that takes care of a lot of problem plugs (like Waves 7). Dimitrios' threads reference it as well.

Ted

---

Subject: Re: Izotope Ozone 4.03b GUI  
Posted by [Ted Gerber](#) on Sat, 19 Mar 2011 03:29:44 GMT  
[View Forum Message](#) <> [Reply to Message](#)

Here's a link that helps some, and that utility I was talking about is shellvst2.exe

[http://kerrygalloway.com/ParisForums/index.php?t=msg&got\\_o=81648&&srch=ffx4+chainer#msg\\_81648](http://kerrygalloway.com/ParisForums/index.php?t=msg&got_o=81648&&srch=ffx4+chainer#msg_81648)

T

---

Subject: Re: Izotope Ozone 4.03b GUI  
Posted by [Wayne](#) on Sat, 19 Mar 2011 18:32:59 GMT  
[View Forum Message](#) <> [Reply to Message](#)

Hi Ted,

Well that solves that. Much appreciated. I'm fine running it this way.

I try to run a simple a system as I can. The only upgrading I may do in the future is add an expansion rack to house 4 EDS cards with a PCI-e cable to a Win7 at 64 bit machine or above system. Maybe a year or two down the line.

Right now 2 EDS in my XP machine does the job but occasionally I sure would like that 3rd card. I've got room but it'll drain my 550w PS which now supports 2 DVDs, 2 Hard drives, 2 EDS, floppy, PCI video, 6 USB.

Thanks again.

Wayne

---

Subject: Re: Izotope Ozone 4.03b GUI

Posted by [Mike Bloomer](#) on Thu, 26 May 2011 17:14:26 GMT

[View Forum Message](#) <> [Reply to Message](#)

---

I gave up using Ozone in Paris and went with Izotope Alloy which works much better for me. The latency of Ozone is huge, a thousand or so samples whereas Alloy is only 1 or 2 samples and does a lot of the same things... The high latency of Ozone for me is a real deal breaker, and the sound of my mixes really improved when I stopped using it in Paris. I still use it for mastering in Wavelab though...

---