
Subject: Paris 3.0 on XP Strange Startup

Posted by [Nicolas Jacques](#) on Tue, 12 Jun 2007 01:46:09 GMT

[View Forum Message](#) <> [Reply to Message](#)

Hello All!

Have been running Paris 3.0 on Xp for more than a year now, with not much problems.

I just decided to send this now to have your view on this.

When i startup the Paris Application, the Splash screen appears, and the communication to the MEC starts.

For me a "normal" startup will show the Internal reference light up, then the sample rate, then Master Clip and then Abit24 Clip.

But sometimes, maybe once on 5 attemps, there will be no communication with the MEC.

The light up sequence will not occur. then if i check in my Patchbay window, there are some components missing.

I close up the App and start it up immediatly and it is then ok...

Has it happened to anyone,, any ideas? any driver update?

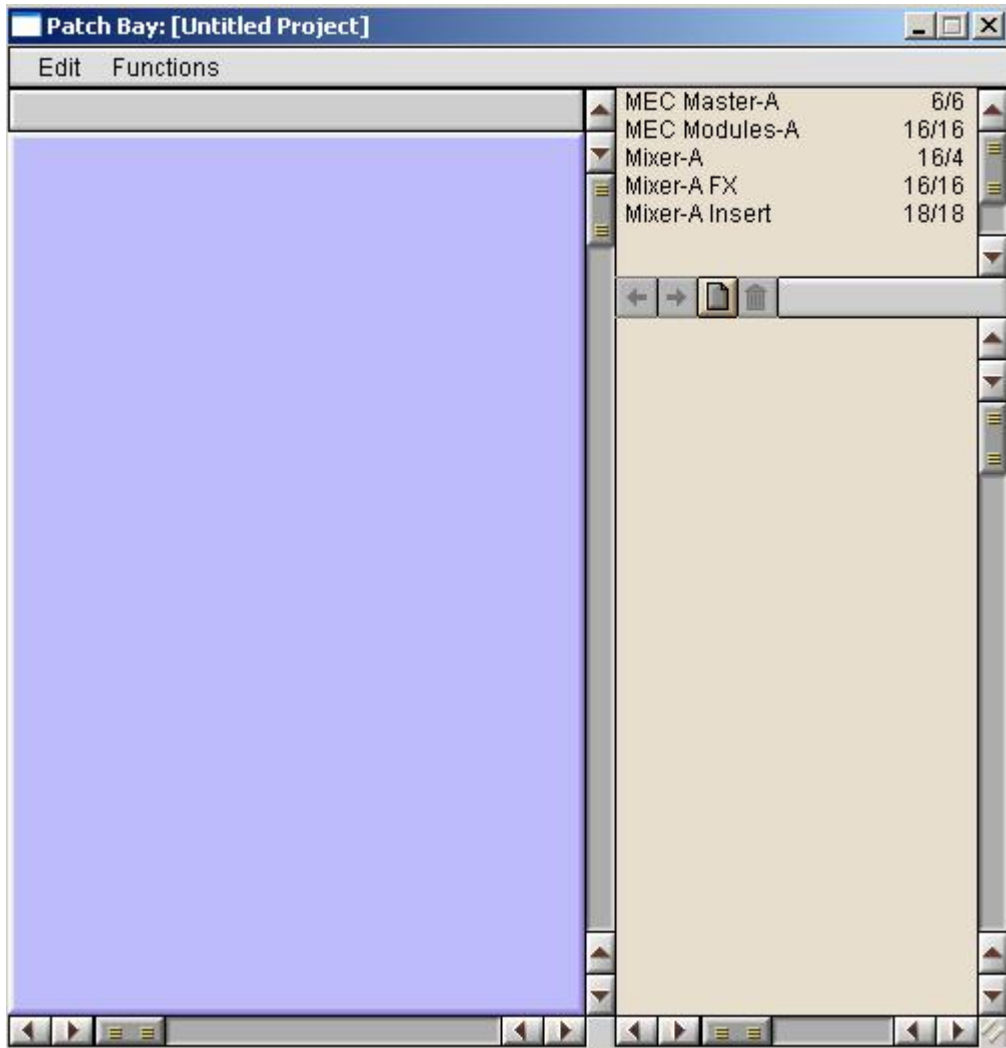
See the provided Attached images just in case

thank you!

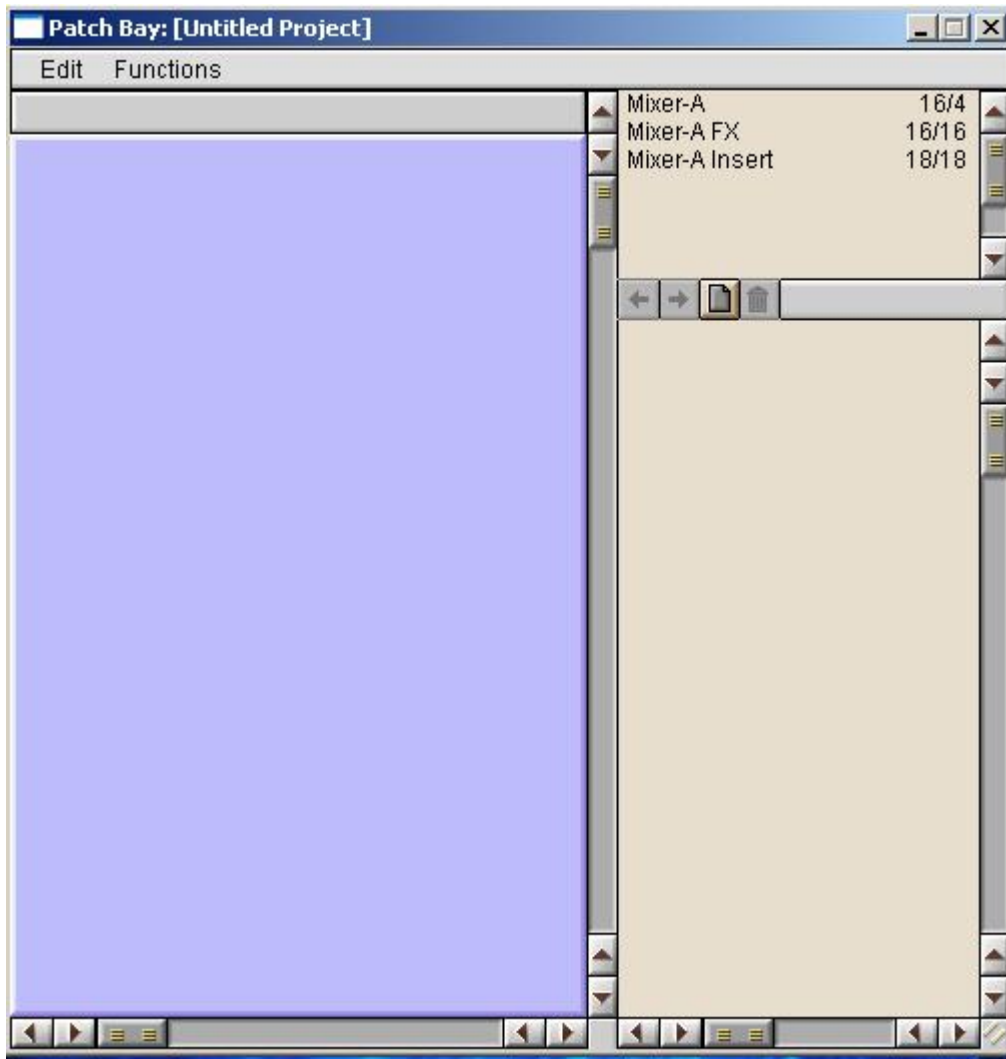
NJ

File Attachments

1) [Patchbay.JPG](#), downloaded 238 times



2) [patchbay-missing.JPG](#), downloaded 241 times



3) [INTERFACE-MEC.JPG](#), downloaded 221 times

Sync Source
● internal

SAMPLE RATE
● 44.1K
● 48K

● ● ● ● CLIP
● ● ● ● SIG

EDS - MEC MASTER

● ● CLIP

● ● SIG

● ● CLIP

● ● SIG

● ● CLIP

● ● SIG

● ● CLIP

● ● SIG

EDS - ABIT - 24

Subject: Re: Paris 3.0 on XP Strange Startup
Posted by [Tom Bruhl](#) on Thu, 14 Jun 2007 06:21:33 GMT
[View Forum Message](#) <> [Reply to Message](#)

This is a multi-part message in MIME format.

-----=_NextPart_000_0078_01C7AE2A.BA0CD0D0
Content-Type: text/plain;
charset="iso-8859-1"
Content-Transfer-Encoding: quoted-printable

Nicolas,
You should post this question to [IDEA.emuensoniqparis](#) . That is the =
newsgroup that
can help you.
Tom

"Nicolas Jacques" <webbit@videotron.ca> wrote in message =
news:466dfd1d@linux...
Hello All!

Have been running Paris 3.0 on Xp for more than a year now, with not =
much=20
problems.

I just decided to send this now to have your view on this.

When i startup the Paris Application, the Splash screen appears, and =
the=20
communication to the MEC starts.

For me a "normal" startup will show the Internal reference light up, =
then=20
the sample rate, then Master Clip and then Abit24 Clip.

But sometimes, maybe once on 5 attempts, there will be no communication =
with=20
the MEC.

The light up sequence will not occur. then if i check in my Patchbay =
window,=20
there are some components missing.

I close up the App and start it up immediatly and it is then ok...

Has it happened to anyone,, any ideas? any driver update?

See the provided Attached images just in case

thank you!

NJ

I choose Polesoft Lockspam to fight spam, and you?

<http://www.polesoft.com/refer.html>

-----=_NextPart_000_0078_01C7AE2A.BA0CD0D0

Content-Type: text/html;

charset="iso-8859-1"

Content-Transfer-Encoding: quoted-printable

```
<!DOCTYPE HTML PUBLIC "-//W3C//DTD HTML 4.0 Transitional//EN">
```

```
<HTML><HEAD>
```

```
<META http-equiv=3DContent-Type content=3D"text/html; =
charset=3Diso-8859-1">
```

```
<META content=3D"MSHTML 6.00.2800.1400" name=3DGENERATOR>
```

```
<STYLE></STYLE>
```

```
</HEAD>
```

```
<BODY bgColor=3D#ffffff>
```

```
<DIV><FONT face=3DArial size=3D2>Nicolas,</FONT></DIV>
```

```
<DIV><FONT face=3DArial size=3D2>You should&nbsp;post this question to=20
IDEA.emuensoniqparis .&nbsp; That is the newsgroup that</FONT></DIV>
```

```
<DIV><FONT face=3DArial size=3D2>can&nbsp;help you.</FONT></DIV>
```

```
<DIV><FONT face=3DArial size=3D2>Tom</FONT></DIV>
```

```
<DIV><FONT face=3DArial size=3D2></FONT>&nbsp;</DIV>
```

```
<DIV><FONT face=3DArial size=3D2></FONT>&nbsp;</DIV>
```

```
<BLOCKQUOTE=20
```

```
style=3D"PADDING-RIGHT: 0px; PADDING-LEFT: 5px; MARGIN-LEFT: 5px; =
BORDER-LEFT: #000000 2px solid; MARGIN-RIGHT: 0px">
```

```
<DIV>"Nicolas Jacques" &lt;<A=20
```

```
href=3D"mailto:webbit@videotron.ca">webbit@videotron.ca</A>&gt; wrote =
in message=20
```

```
<A href=3D"news:466dfd1d@linux">news:466dfd1d@linux</A>...</DIV>Hello=20
```

```
All!<BR><BR>Have been running Paris 3.0 on Xp for more than a year =
now, with=20
```

```
not much <BR>problems.<BR><BR>I just decided to send this now to have =
your=20
```

```
view on this.<BR><BR>When i startup the Paris Application, the Splash =
screen=20
```

```
appears, and the <BR>communication to the MEC starts.<BR><BR>For me a =
"normal"=20
```

```
startup will show the Internal reference light up, then <BR>the sample =
```

rate,=20

then Master Clip and then Abit24 Clip.

But sometimes, maybe =
once on 5=20

attempts, there will be no communication with
the MEC.

The =
light up=20

sequence will not occur. then if i check in my Patchbay window, =

there are=20

some components missing.

I close up the App and start it up =
immediatly=20

and it is then ok...

Has it happened to anyone,, any ideas? any =
driver=20

update?

See the provided Attached images just in =
case

thank=20

you!

NJ

</BLOCKQUOTE>

<DIV>

I choose Polesoft Lockspam to fight spam, =
and=20

you?
<A=20

href=3D"http://www.polesoft.com/refer.html">http://www.polesoft.com/refer=
..html </DIV></BODY ></HTML>

-----=_NextPart_000_0078_01C7AE2A.BA0CD0D0--
