
Subject: UAD-1 / Paris issues

Posted by [mani1147](#) on Tue, 09 Mar 2010 15:28:27 GMT

[View Forum Message](#) <> [Reply to Message](#)

Hi Guys, I am having a hell of a time trying to get Paris 3.0 and my UAD-1 pci to play nice together. I have a 3 card mix of about 24 tracks total. The sys is my new i7 box, 4 gig ram, xp pro.

All tracks have been rendered, no cross-fades anywhere, I have 55% usage in UAD meter. After powering up the box, I can usually play the song start to end without problem, but on second playback, I get about halfway and the cursor start to jump around a little then playback stops and I get the paris streaming error followed by a UAD (err=21) error. (see screen grab)

I am suspecting an IRQ issue as my 3rd EDS is sharing IRQ 19 with the UAD but I have tried everything I can think of to change the IRQ allocation but the darn box is still greyed out in the device manager.

Could it be a Paris config issue (paris.cfg), here is my current config.

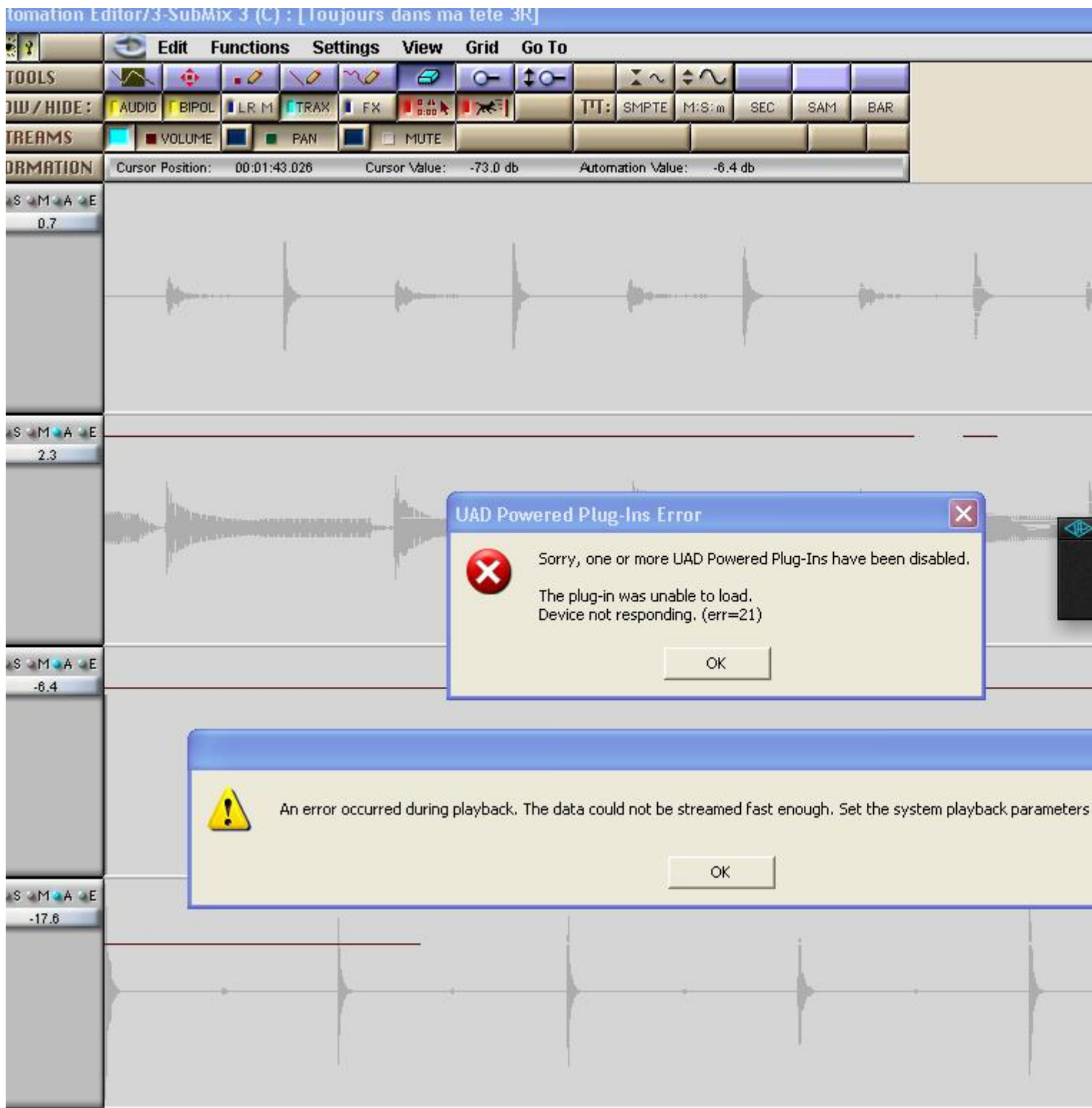
```
-----  
*****  
*** PARIS Configuration ***  
*****  
*** ENGINE configuration parameters ***  
* Cache Size in MB  
CacheSize=172  
  
* Overview cache size in KB  
OvwCacheSize=22000  
  
* I/O configuration  
IOSize=264  
  
* SubMix Cache Size in KB  
SubMixCacheSize=1024  
  
ManualRecDelay=8192  
MidiPlayDisabled=0  
RecXFadeLen=20  
Use32BitWinMTC=0  
DisableDirectX=1  
MasterOutputCard=0  
ScrubMaxRate=1  
WheelSensitivity=20  
WheelInertia=68  
CSProVersion=DEFGH  
ScrubQuality=1
```

MIDIPlayDisabled=1
VSTDirectory=C:\VSTParis\
UndoLevelsSaved=10
RedoLevelsSaved=10

Thanks in advance for any help.
Rob_A

File Attachments

1) [uad error.JPG](#), downloaded 562 times



Subject: Re: UAD-1 / Paris issues

Posted by [kerryg](#) on Tue, 09 Mar 2010 18:03:55 GMT

[View Forum Message](#) <> [Reply to Message](#)

IRQ wouldn't surprise me: off the top of my head, your rig looks like a good candidate for an external expansion chassis, although I'm sure Mike will have some ideas for workarounds.

Subject: Re: UAD-1 / Paris issues

Posted by [drfrankencopter](#) on Tue, 09 Mar 2010 19:45:42 GMT

[View Forum Message](#) <> [Reply to Message](#)

I bet a PCI-e to PCI adapter would do the trick.

Or perhaps there are some BIOS settings to assign the slots to particular IRQs.

Cheers

Kris

Subject: Re: UAD-1 / Paris issues

Posted by [mani1147](#) on Tue, 09 Mar 2010 20:18:59 GMT

[View Forum Message](#) <> [Reply to Message](#)

PCI-e to PCI, I never thought of that one, I just may try this if the price is rite. As for bios settings, I don't see anyplace in the bios to assign IRQs to PCI slots as well as any place to set for a Plug and Play OS. That's probably why, even after reinstalling XP using the "standard PC" HAL, that I still cant change resources in device manager, greyed out.

Thanks for the help guys.

Rob_A

Subject: Re: UAD-1 / Paris issues

Posted by [mani1147](#) on Tue, 09 Mar 2010 20:33:59 GMT

[View Forum Message](#) <> [Reply to Message](#)

Found this one on ebay

Its a hell of a lot cheaper than the virtuavia, you guys think I should take a chance?

Subject: Re: UAD-1 / Paris issues

Posted by [drfrankencopter](#) on Tue, 09 Mar 2010 21:23:20 GMT

[View Forum Message](#) <> [Reply to Message](#)

Or, maybe you have a good excuse to look at UAD-2's.

I think the PCI-e adapter is a good try at \$10.

Cheers

Kris

Subject: Re: UAD-1 / Paris issues
Posted by [dnafe](#) on Tue, 09 Mar 2010 21:54:27 GMT
[View Forum Message](#) <> [Reply to Message](#)

Live dangerously

Subject: Re: UAD-1 / Paris issues
Posted by [Ted Gerber](#) on Tue, 09 Mar 2010 22:31:11 GMT
[View Forum Message](#) <> [Reply to Message](#)

FWIW

I also am running PARIS 3 on XP (not pro) with an i7.

I'm running UAD2 Duo together with a UAD1e (both PCIe of course) and have no problems...

Ted

Subject: Re: UAD-1 / Paris issues
Posted by [mani1147](#) on Fri, 26 Mar 2010 15:57:15 GMT
[View Forum Message](#) <> [Reply to Message](#)

Update: I received the PCI to PCIe adapter and so far, the UAD-1 card seems happy.

Rob

Subject: Re: UAD-1 / Paris issues
Posted by [gamrecords](#) on Thu, 05 Aug 2010 15:03:53 GMT
[View Forum Message](#) <> [Reply to Message](#)

Is there still the latency problem with the UAD-1 and Paris?

Subject: Re: UAD-1 / Paris issues
Posted by [dnafe](#) on Thu, 05 Aug 2010 19:47:47 GMT

yes...somewhere in the 1000-4000 samples depending on the plugin

I just use sampleslide to determine the latency then pump the numbers into Faderworks and Bob's your Uncle, no latency. The only drag is editing with that much compensation is totally inaccurate