
Subject: Re: ASIO DRIVER current status ?
Posted by [danielcornelius](#) on Wed, 11 Oct 2023 17:33:31 GMT
[View Forum Message](#) <> [Reply to Message](#)

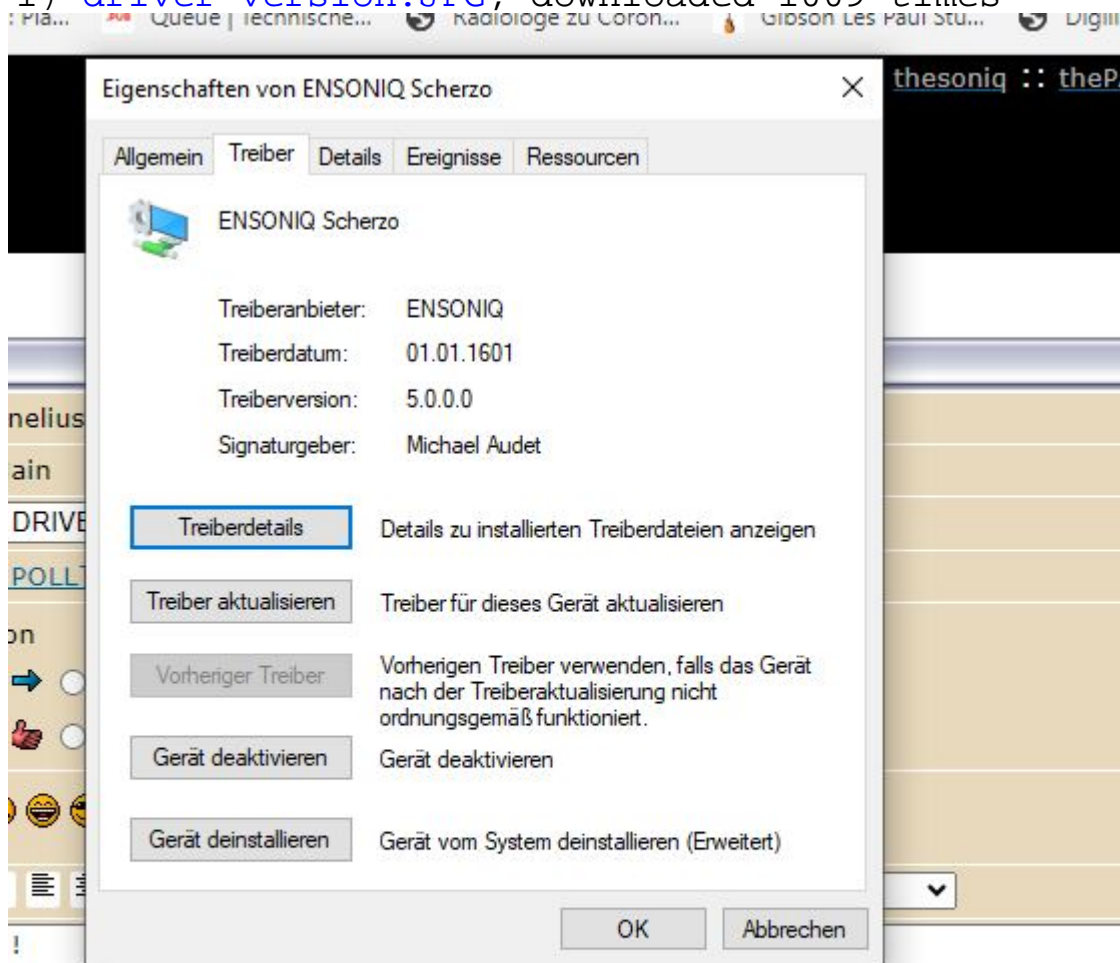
Hi Mike !

I have the version 5.0.0.0 of driver. Is this the one you mean ?

Best regards
Dan

File Attachments

1) [driver version.JPG](#), downloaded 1009 times



he version 5.0.0.0 of driver. Is this the one you mean ?

ards