

---

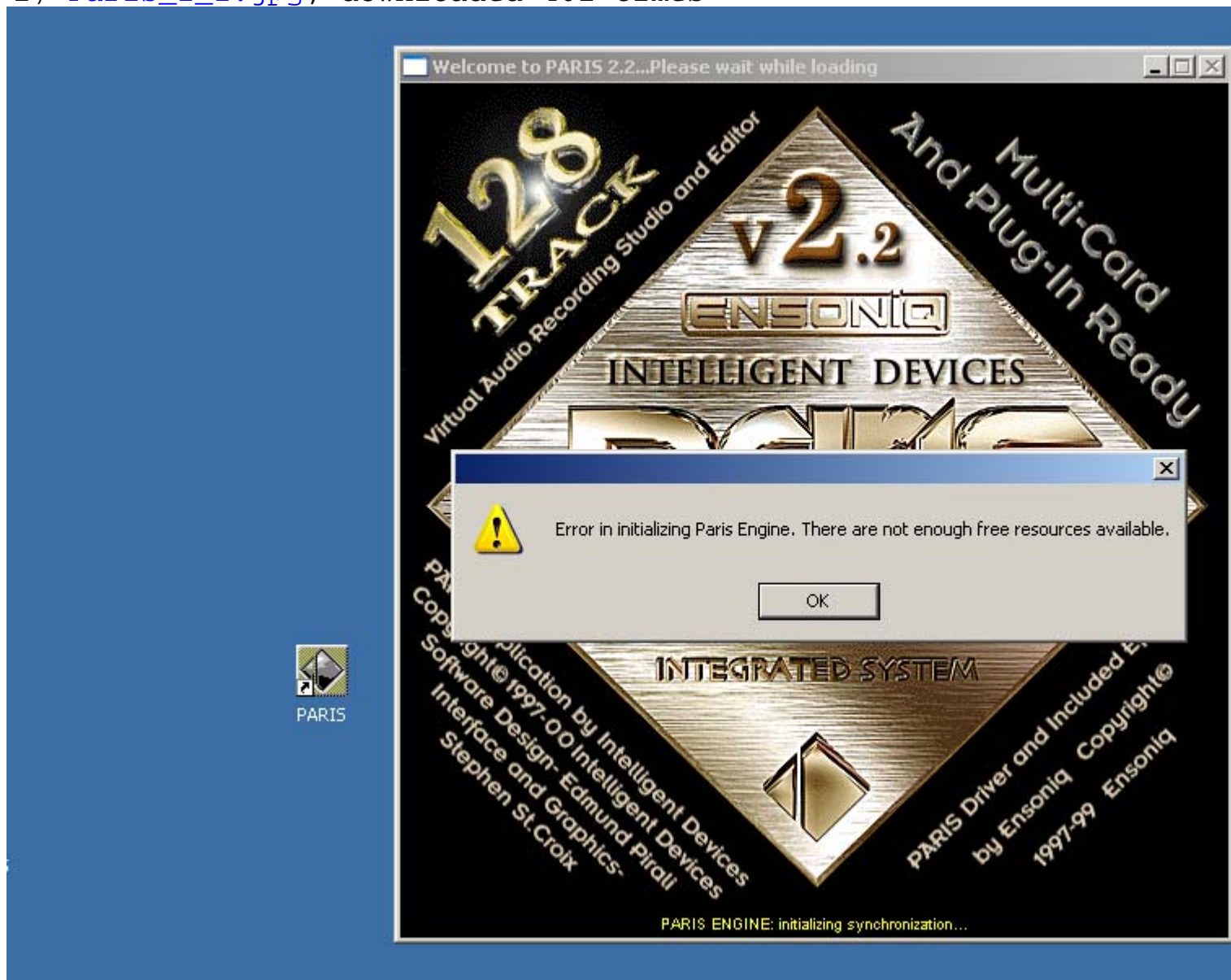
Subject: Paris installation problem  
Posted by [jofamusic](#) on Thu, 10 Oct 2013 17:09:58 GMT  
[View Forum Message](#) <> [Reply to Message](#)

---

I installed the 3.0 drivers, the control panel of windows everything is ok, but Paris does not start. my operating system is Windows XP service pack 3. The message does it mean? thanks

### File Attachments

1) [Paris\\_2\\_2.jpg](#), downloaded 461 times



---

Subject: Re: Paris installation problem  
Posted by [jofamusic](#) on Fri, 11 Oct 2013 06:30:23 GMT  
[View Forum Message](#) <> [Reply to Message](#)

---

No one knows this problem. Could someone tell me what it is. Very tanks.

---

---

Subject: Re: Paris installation problem

Posted by [JohnG](#) on Mon, 14 Oct 2013 02:00:41 GMT

[View Forum Message](#) <> [Reply to Message](#)

---

I am not an expert but...

What do you mean 3.0 drivers? Mikes new drivers?

Do you have enough RAM?

Any IRQ conflicts? If so you could disable any devices that you are not using.

I am running windows xp on an AMD single core machine and paris 3.0, 2 eds cards, with mike's new drivers.

Occasionally I get an unhandled exception upon launching paris, not sure why. But when it launches properly, it is running pretty well. I've done several sessions over the weekend with no errors or crashes.

I was getting errors that I didn't have enough physical memory before I added some RAM. I went from 1 GB to 2 GB of RAM.

Good Luck!

John

---

---

Subject: Re: Paris installation problem

Posted by [Ted Gerber](#) on Tue, 15 Oct 2013 14:39:36 GMT

[View Forum Message](#) <> [Reply to Message](#)

---

I believe this has to do with the configuration settings in the Project page. Too much allocated to track count punch in time etc.

Also you're running 2.2 here whereas Mike's new drivers are for 3.0

Ted

---

---

Subject: Re: Paris installation problem

Posted by [mikeaudet](#) on Wed, 16 Oct 2013 23:08:04 GMT

[View Forum Message](#) <> [Reply to Message](#)

---

Which version of my drivers are you using? PARIS 2.x will give this error if the PARIS midi driver is missing.

I can send you the driver if you need it.

All the best,

Mike

---

---

Subject: Re: Paris installation problem

Posted by [danielcornelius](#) on Tue, 01 Apr 2014 12:29:11 GMT

[View Forum Message](#) <> [Reply to Message](#)

---

I believe he has installed the scherzo 3.0 beta and got a multicore System.

I got a Pentium 4 System an tried to install Mikes driver. It will not run, cause i get an 1/1 Error, shown at Pariswiki. The driver runs only at my multicoresystem.

Best Regards

Dan

---

Subject: Re: Paris installation problem

Posted by [mikeaudet](#) on Tue, 01 Apr 2014 12:41:46 GMT

[View Forum Message](#) <> [Reply to Message](#)

---

Hi Dan,

The latest drivers do work on single core systems, but they have the additional overhead and memory usage for double buffering the audio streams. This double buffering is a requirement for them to work on 64 bit systems with more than 4 GB of RAM.

Error 1/1 means that the scherzo drivers aren't installed. If you need any help with an install, though it sounds like you are using a newer PC now, I'll be happy to help.

All the best!

Mike

---

Subject: Re: Paris installation problem

Posted by [danielcornelius](#) on Tue, 01 Apr 2014 17:13:59 GMT

[View Forum Message](#) <> [Reply to Message](#)

---