
Subject: New DAW build

Posted by [mani1147](#) on Mon, 11 Jan 2010 13:13:31 GMT

[View Forum Message](#) <> [Reply to Message](#)

Hi guys, I am planning a new DAW build for my 3 card PARIS sys. I am upgrading from a P4 2.8 and looking for a good cross between performance, value, quietness and compatibility with our old friend PARIS (using Mike's multi core driver of course).

Is there anything I am missing that would improve my performance/value ratio while still keeping the 4PCI mobo?

Thanks in advance

Robert

PS: Contact me privately if preferred.

mani1147athotmaildotcom

[http:// www.newegg.ca/Product/Product.aspx?Item=N82E16819115214&nm_mc=TEMC-RMA-Approvel&cm_mmc=TEMC-RMA-Approvel-_Conte nt-_text_-Intel Core i7-860 Lynnfield 2.8GHz 8MB L3 Cache LGA 1156 95W Quad-Core ProcessorIntel Core i7-860 Lynnfield 2.8GHz 8MB L3 Cache LGA 1156 95W Quad-Core Processor 0.13638217193460783](http://www.newegg.ca/Product/Product.aspx?Item=N82E16819115214&nm_mc=TEMC-RMA-Approvel&cm_mmc=TEMC-RMA-Approvel-_Conte nt-_text_-Intel Core i7-860 Lynnfield 2.8GHz 8MB L3 Cache LGA 1156 95W Quad-Core ProcessorIntel Core i7-860 Lynnfield 2.8GHz 8MB L3 Cache LGA 1156 95W Quad-Core Processor 0.13638217193460783)

Antec Sonata III 500 Black 0.8mm cold rolled steel ATX Mid Tower Computer Case 500W Power Supply 16.7" (H) x 18.2" (D) x 8.1" (W)

GIGABYTE GA-P55-UD3L LGA 1156 Intel P55 ATX Intel Motherboard

GIGABYTE GV-R455D3-512I Radeon HD 4550 512MB 64-bit DDR3 PCI Express 2.0 x16 HDCP Ready CrossFireX Support Video Card

LITE-ON Black 24X DVD+R 8X DVD+RW 8X DVD+R DL 22X DVD-R 6X DVD-RW SATA CD/DVD Burner

OCZ Platinum 4GB (2 x 2GB) 240-Pin DDR3 SDRAM DDR3 1333 (PC3 10666) Desktop Memory Model OCZ3P1333LV4GK

Western Digital Caviar Black WD6401AALS 640GB 7200 RPM 32MB Cache SATA 3.0Gb/s 3.5" Internal Hard Drive

Subject: Re: New DAW build

Posted by [mani1147](#) on Mon, 18 Jan 2010 02:57:38 GMT

[View Forum Message](#) <> [Reply to Message](#)

Well, almost ready to hit the old submit button on the order.

Man I hate the feeling of "The Unknown" whenever my wallet is concerned...!

I know I'll have to mode the case a bit to fit the EDSs in there but the main issue is the compatibility of the UD3L mobo with the EDS cards.

File Attachments

1) [daw.jpg](#), downloaded 201 times

Cart Item List:

Qty.	Product Description	Savings	Total Price
1	<u>OCZ Platinum 4GB (2 x 2GB) 240-Pin DDR3 SDRAM DDR3 1333 (PC3 10666) Desktop Memory</u> Item #:N82E16820227478 Return Policy: Standard Return Policy	-\$7.00 Instant \$20.00 USD Mail-in Rebate	\$129.99 \$122.99
1	<u>LITE-ON CD/DVD Burner - Bulk Black SATA Model iHAS124-04</u> Item #:N82E16827106289 Return Policy: Standard Return Policy		\$32.99
1	<u>GELID Solutions GC-Extreme Thermal Compound</u> Item #:N82E16835426020 Return Policy: Standard Return Policy		\$14.99
2	<u>SAMSUNG Spinpoint F1 320GB 3.5" SATA 3.0Gb/s Hard Drive -Bare Drive</u> Item #:N82E16822152096 Return Policy: Standard Return Policy		\$139.98
1	<u>GIGABYTE Radeon HD 4550 GV-R455D3-512I Video Card</u> Item #:N82E16814125250 Return Policy: VGA Replacement Only Return Policy	-\$5.00 Instant	\$51.49 \$46.49
1	<u>Intel Core i7-860 2.8GHz LGA 1156 95W Quad-Core Processor</u> Item #:N82E16819115214 Return Policy: CPU Replacement Only Return Policy	-\$15.00 Instant	\$319.99 \$304.99
2	<u>Scythe SY1225SL12SH "Slipstream" Case Fan</u> Item #:N82E16835185060 Return Policy: Standard Return Policy		\$21.98
1	<u>GIGABYTE GA-P55-UD3L ATX Intel Motherboard</u> Item #:N82E16813128406 Return Policy: Standard Return Policy	-\$10.00 Instant	\$139.99 \$129.99
1	<u>Antec Sonata III 500 Black Computer Case</u> Item #:N82E16811129024 Return Policy: Standard Return Policy	-\$50.00 Instant	\$159.99 \$109.99
Grand Total:			\$924.39

Subject: Re: New DAW build
 Posted by [Ted Gerber](#) on Tue, 19 Jan 2010 01:19:27 GMT
[View Forum Message](#) <> [Reply to Message](#)

The drive carriages on the Sonata case will have to cut back...

Ted

Subject: Re: New DAW build

Posted by [mani1147](#) on Tue, 19 Jan 2010 02:14:39 GMT

[View Forum Message](#) <> [Reply to Message](#)

Hi Ted, yea that's what I'm planning on, cutting the 3 bottom bays out and leaving the 2 top ones, as long as I can fit an OS and a DATA drive in there, I should be ok.

Rob_A

File Attachments

1) [case.JPG](#), downloaded 829 times



Subject: Re: New DAW build

Posted by [Ted Gerber](#) on Tue, 19 Jan 2010 04:30:42 GMT

[View Forum Message](#) <> [Reply to Message](#)

Let me know how it goes. I still have mine, and maybe I'll switch things back into it...

Subject: Re: New DAW build
Posted by [mani1147](#) on Fri, 22 Jan 2010 04:57:17 GMT

[View Forum Message](#) <> [Reply to Message](#)

Well Ted, the case showed up today, now if the mobo can get here, I'll know exactly how much room I need for the EDS cards and then its lookout, the dremel is in the house...!!

Must say, its a very impressive case for the price.

Subject: Re: New DAW build
Posted by [Ted Gerber](#) on Fri, 22 Jan 2010 05:05:35 GMT

[View Forum Message](#) <> [Reply to Message](#)

Yeah I ended up with an old beater from the back shed. But since it's outside my little control room, in a closet, I'm not too concerned.

Ted

Subject: Re: New DAW build
Posted by [rsi77](#) on Sat, 30 Jan 2010 18:54:32 GMT

[View Forum Message](#) <> [Reply to Message](#)

Keep us posted how your new build goes. I'm about ready to make a new box for Paris with SATA 3 and I'm curious how these newer MB's are working out for people.

Ron

Subject: Re: New DAW build
Posted by [mani1147](#) on Mon, 01 Feb 2010 05:23:42 GMT

[View Forum Message](#) <> [Reply to Message](#)

Hi Ron, the only big hick-up so far has been bad Ram, gotta send it back tomorrow and wait for replacement. One Dimm passed "Windows Memory Diagnostic" perfectly every time but the other was intermittent and we all know Paris can get real grumpy with bad Ram....!!

The mobo's Sata connections are not well placed on the board, in order to get the EDS cards

happily seated, one would need some ultra low profile angled sata cables to do it correctly. I just used the ones that came with the mobo and with a rather funky bend and some electrical tape, got them to fit but its not the ideal setup.

The case mod went without a hitch, was actually less work than I thought, 5 minutes with the dremil and shopvac and it was ready to go, I have some pics I'll put up here. I even fit the spare case fan in the front to cool off the 3 EDS cards. Only 2 HD bays left though.

The video card worked great with my matrox dualhead2go and all 3 monitors are up and 2 of them switching properly with the USB KVM switch.

The system is working great so far, I had it up all weekend running on 1 good stick of 2GB DDR3 Ram and man, what a diff from the old P4. Its as if Paris is out of the mud and onto solid ground where it can dig in and get some pretty mean traction. Cant wait to really put it to the test.

Take care
Rob_A

Subject: Re: New DAW build
Posted by [mani1147](#) on Thu, 04 Feb 2010 19:08:45 GMT
[View Forum Message](#) <> [Reply to Message](#)

Here are a few pics of the DAW build.

This is the Case mod to fit 3 EDS cards.

Cleaned off the intel heat compound to apply the good stuff.

The top EDS card in place with mounted CPU/fan on mobo.

I ended up covering the cut edge with electrical tape. I'm sure some of those EDS pins would not appreciate a sudden dose of case ground.

The 3 EDS cards in place with the UAD1 PCI and the PCIe video card up above, extra case fan in the front. The 3 remaining HD bays but only 2 can be used because of the extra fan in the front.

Notice the Sata cables underneath the EDS cards, this was probably the most funky part of the build. Like I said, low profiles left angle Sata cables would do a nice job here, I will probably get some in my next order.

Before I sent the ram back for replacement, I had the box working on 2gig ram, XPro, Paris 3.0 with Mikes drivers and I was very impressed. Now its back to the P4 till the replacement ram to gets here.

Cheers

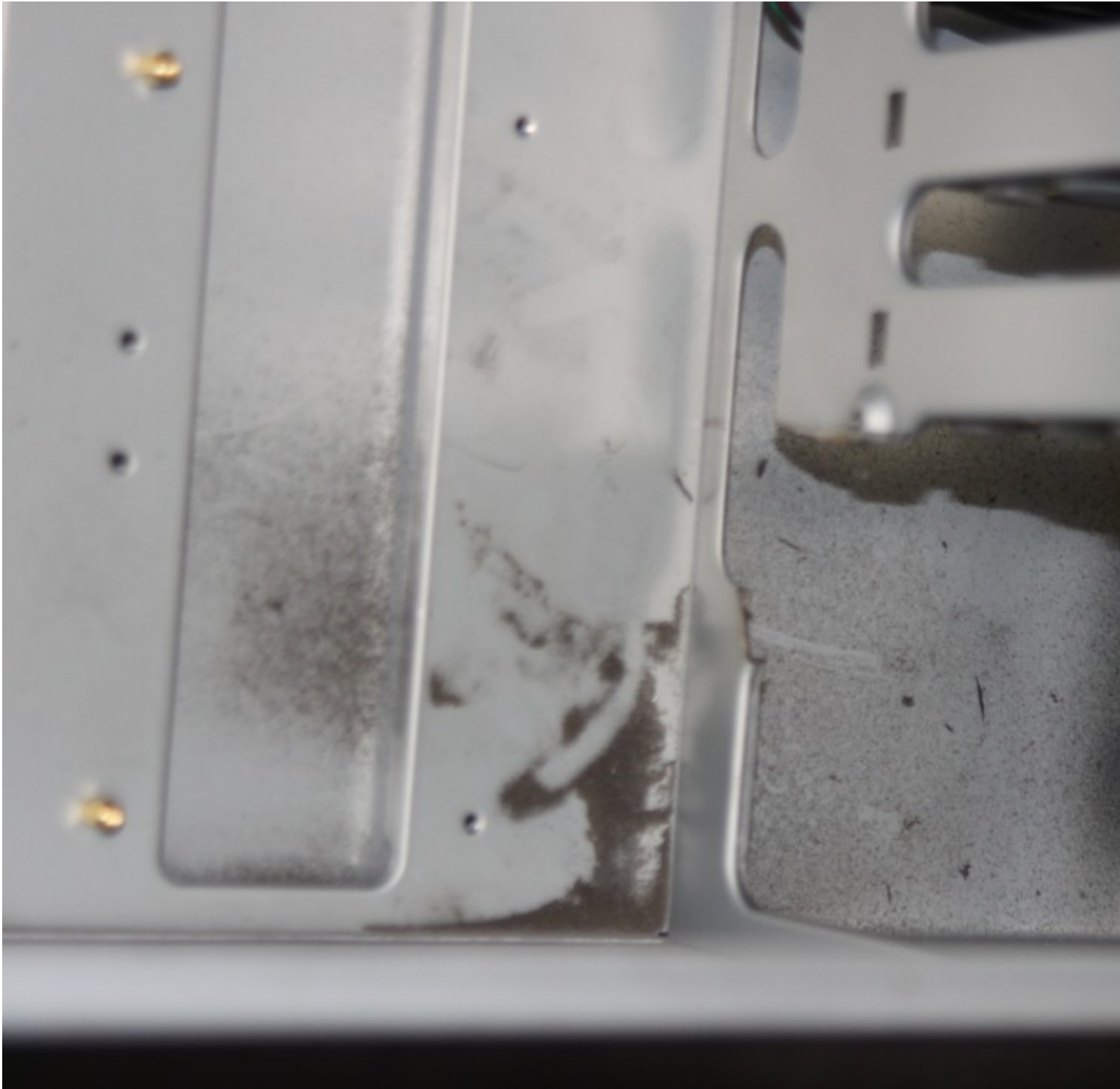
Robert A

File Attachments

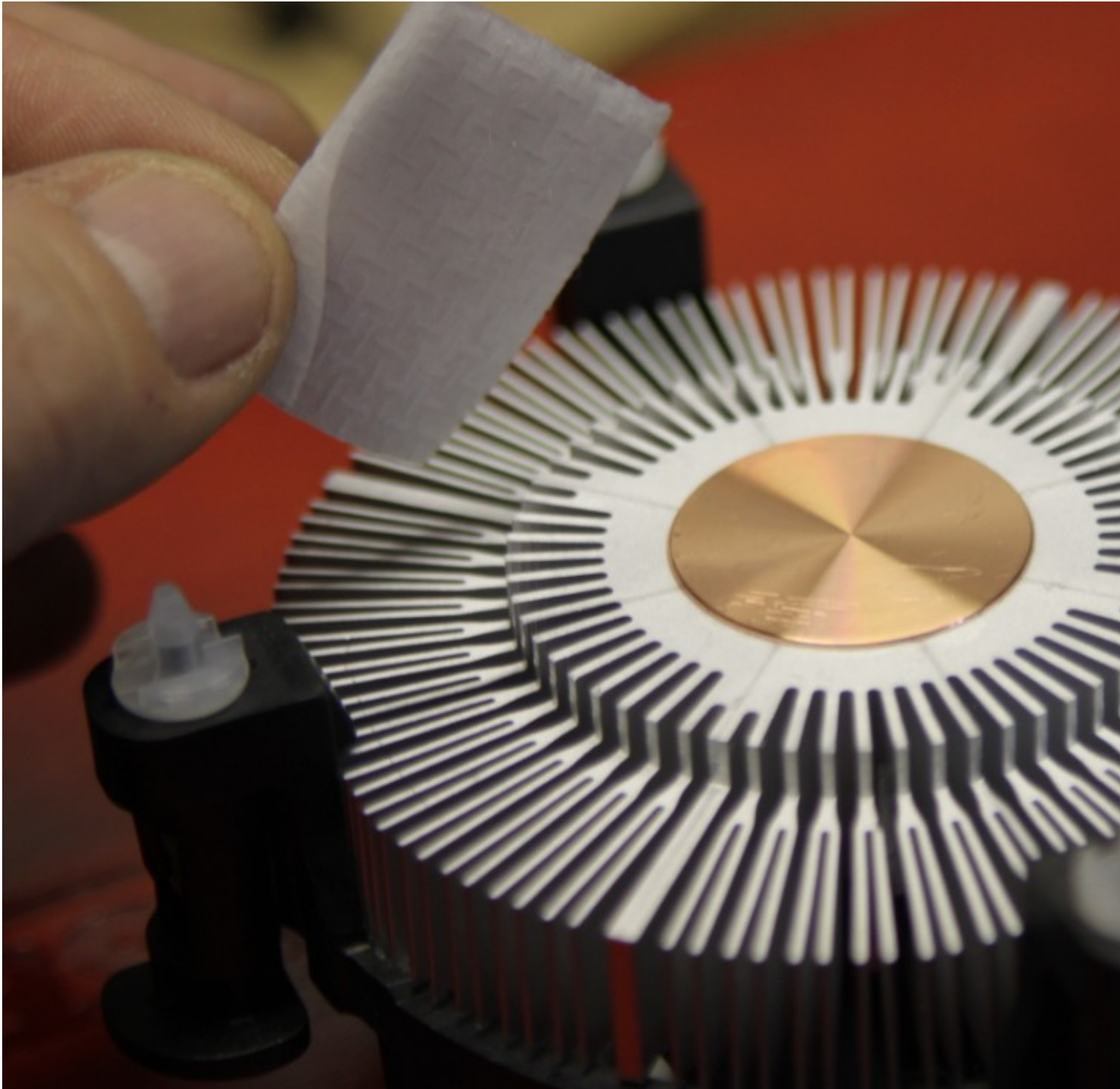
1) [IMG_3388.jpg](#), downloaded 719 times



2) [IMG_3389.jpg](#), downloaded 714 times



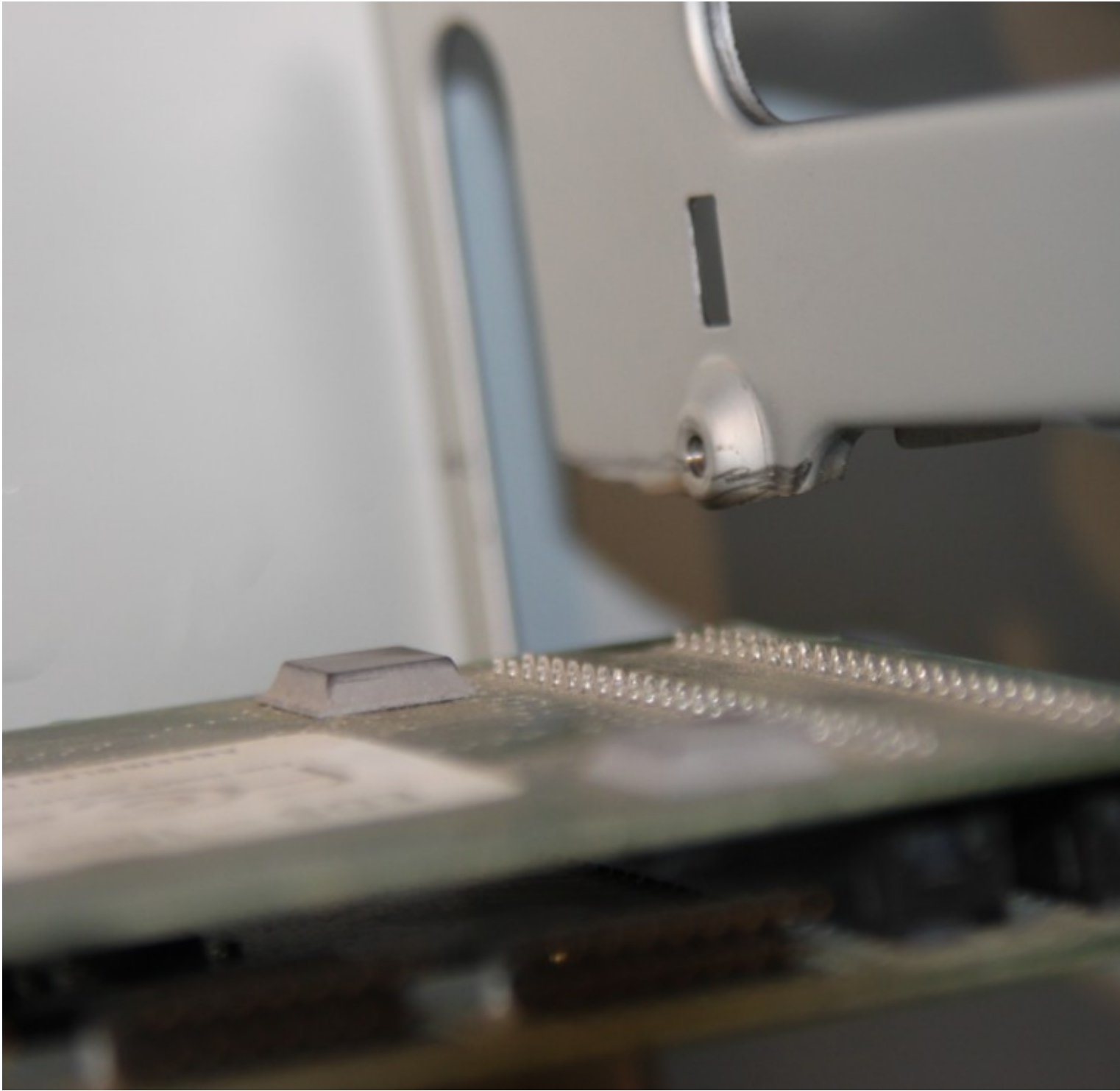
3) [IMG_3394.jpg](#), downloaded 713 times



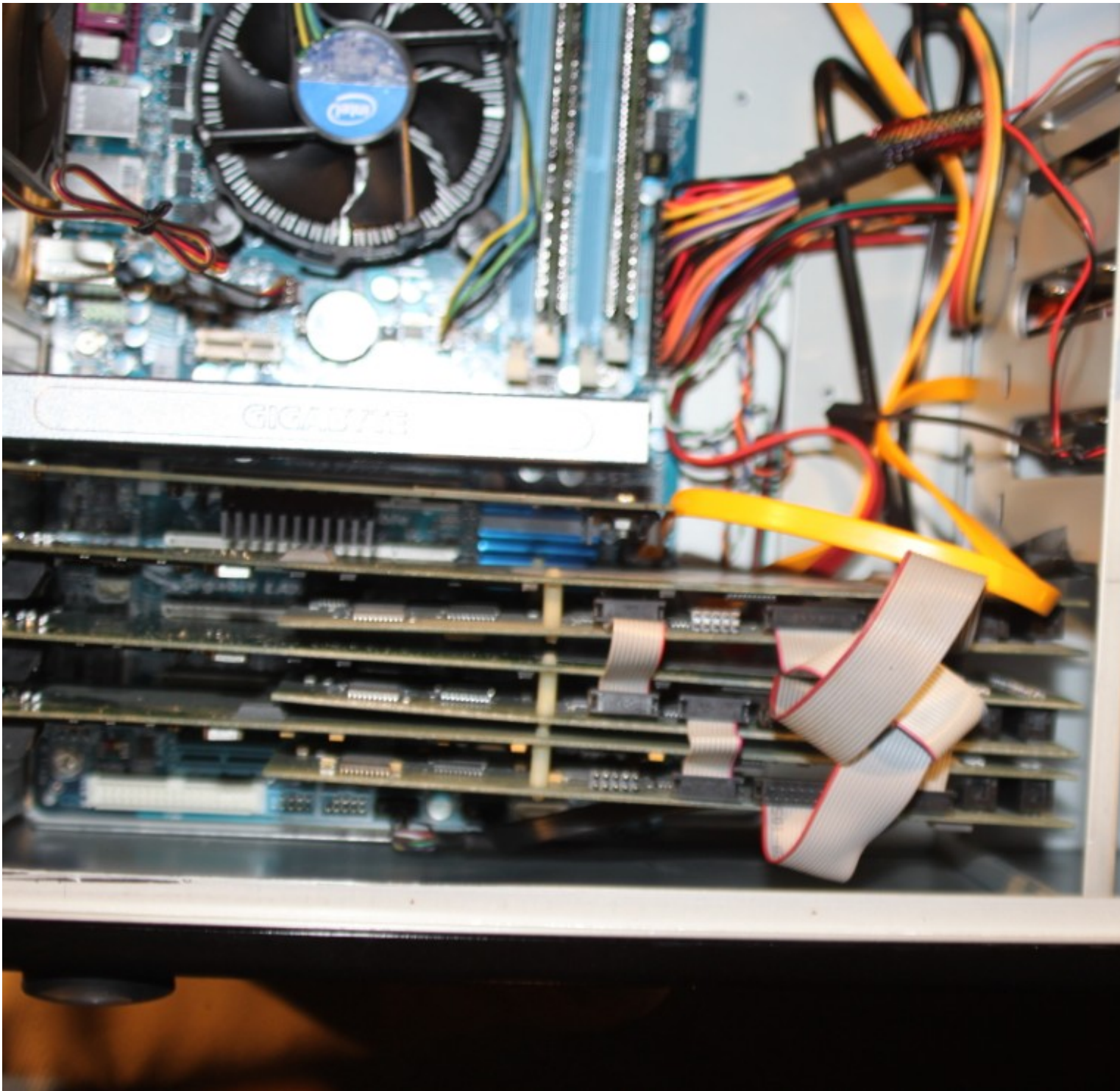
4) [IMG_3396.jpg](#), downloaded 716 times



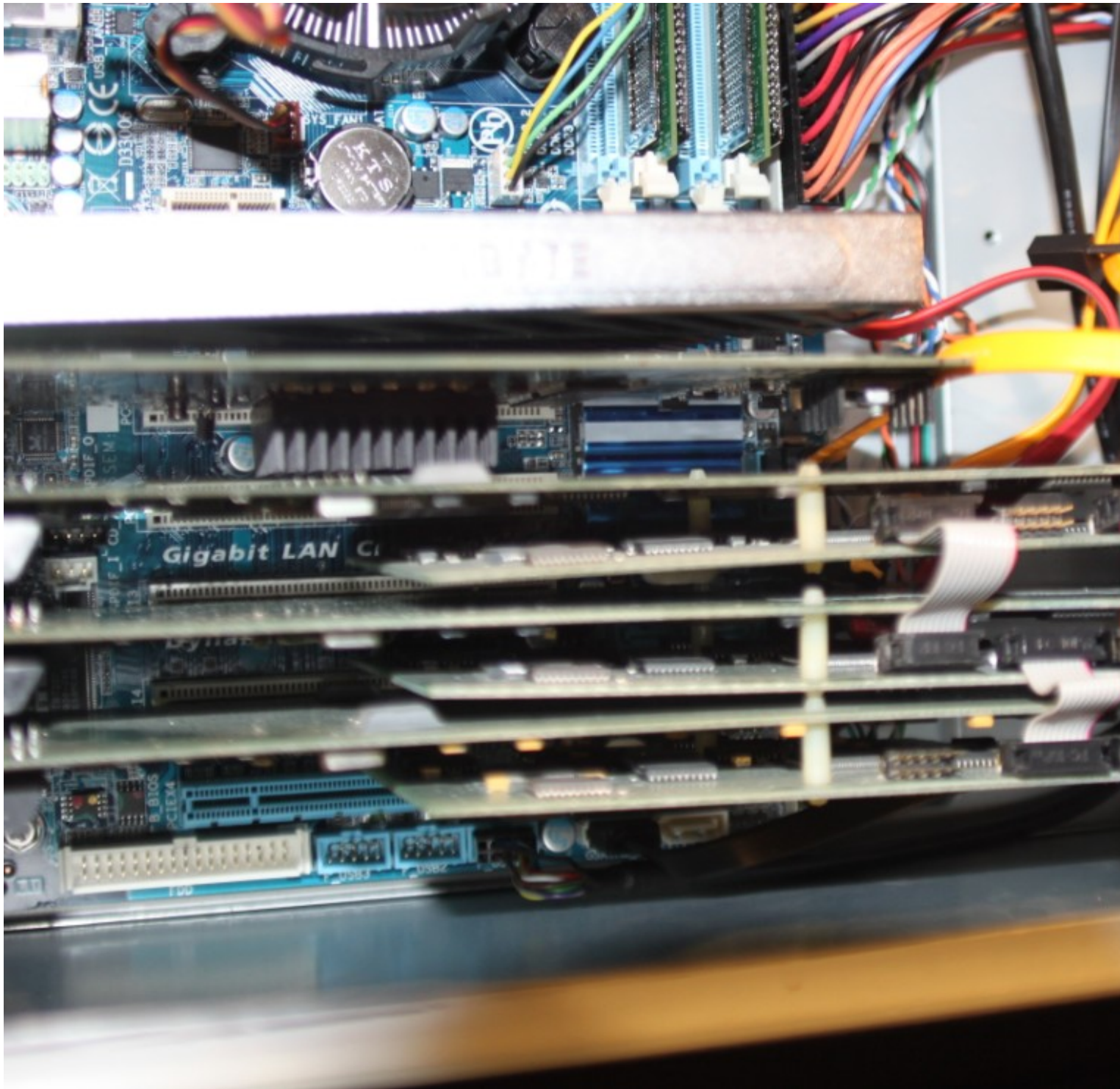
5) [IMG_3397.jpg](#), downloaded 718 times



6) [IMG_3400.jpg](#), downloaded 755 times



7) [IMG_3404.jpg](#), downloaded 706 times



Subject: Re: New DAW build
Posted by [mani1147](#) on Wed, 17 Feb 2010 20:41:17 GMT
[View Forum Message](#) <> [Reply to Message](#)

Was getting some dropouts in wavelab and also Paris was acting a bit funky with "ASSERTION FAILED: aGDIWin.c:376 cp" every now and then. After a couple hours of googling/reading, I found

that there are some advance bios/CPU settings that limit the voltage to the CPU to save energy during idle, I think it was called C1E in my bios but also goes by Speedstep, after disabling this, the box is working like a dream, 3 hours in and not 1 dropout.

Just thought I'd share in case I can help out some other poor soul who has even less hair than I do....!!!

Rob_A

Subject: Re: New DAW build
Posted by [kerryg](#) on Wed, 17 Feb 2010 20:50:48 GMT
[View Forum Message](#) <> [Reply to Message](#)

Congrats, you made the Wiki

When we get insights like that, we ain't *never* letting them go.

Subject: Re: New DAW build
Posted by [drfrankencopter](#) on Wed, 17 Feb 2010 22:08:39 GMT
[View Forum Message](#) <> [Reply to Message](#)

I'm building a new Paris DAW using the same Mobo and processor. I just ordered the parts on Monday, and will provide updates on the build. I'm also doing a 3 EDS card system, and might also put in my UAD-1 (not sure yet).

I'm moving from an antiquated Athlon 2100, and I'm expecting some big speed improvements.

Thanks for the BIOS tip!!!

Cheers

KRis

Subject: Re: New DAW build
Posted by [mani1147](#) on Wed, 17 Feb 2010 22:19:13 GMT
[View Forum Message](#) <> [Reply to Message](#)

You're welcom Kris, all is good so far here with the new box. Keep us posted of your build.

Rob_A

Subject: Re: New DAW build

Posted by [rokuez](#) on Thu, 25 Feb 2010 09:45:32 GMT

[View Forum Message](#) <> [Reply to Message](#)

I really like your daw build

I would think of going with a rack mount PC case

any cons anyone can see to this

I'd really like to have FOUR EDS cards , waiting for my friend hungaristan to describe his new Paris rig for win7!
