

---

Subject: Re: ASIO DRIVER current status ?  
Posted by [danielcornelius](#) on Wed, 11 Oct 2023 17:33:31 GMT  
[View Forum Message](#) <> [Reply to Message](#)

---

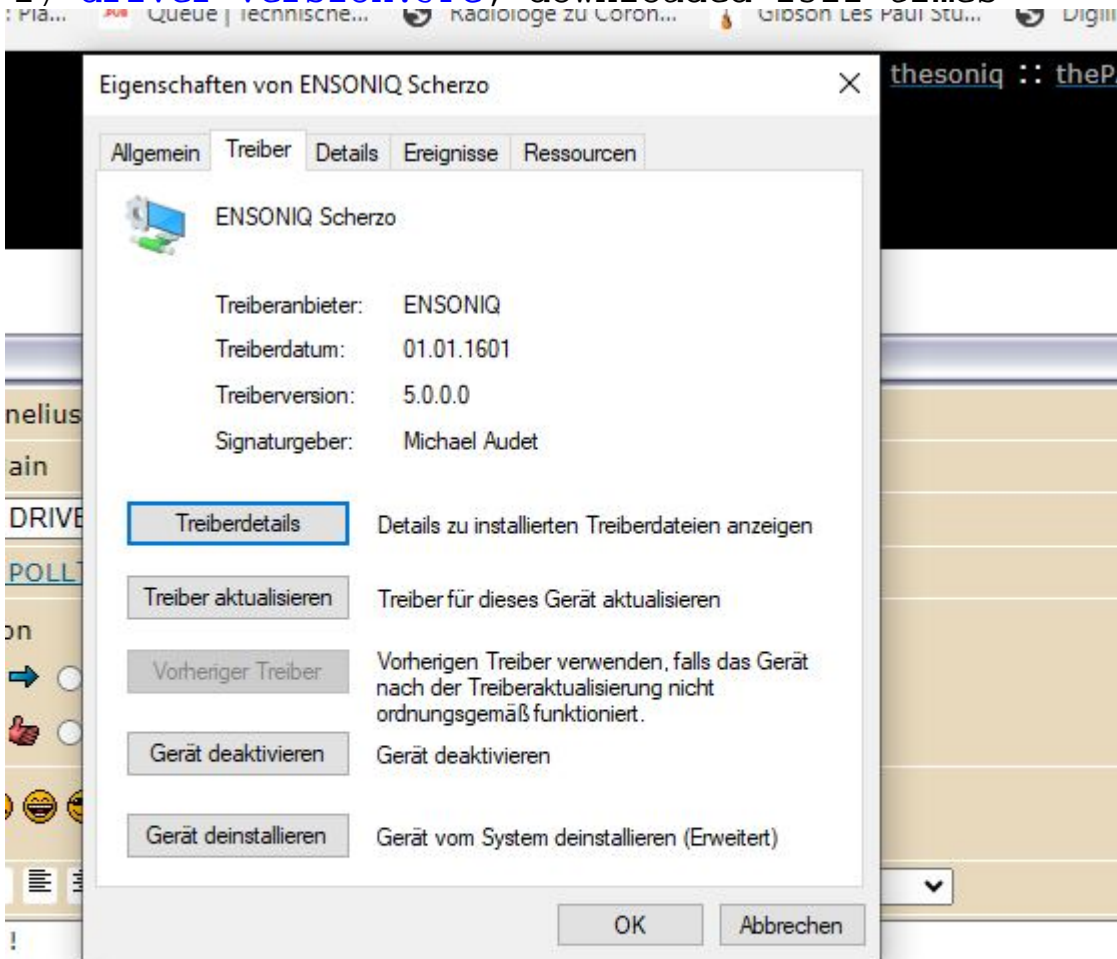
Hi Mike !

I have the version 5.0.0.0 of driver. Is this the one you mean ?

Best regards  
Dan

## File Attachments

1) [driver version.JPG](#), downloaded 2312 times



he version 5.0.0.0 of driver. Is this the one you mean ?

ards