

---

Subject: 8 Output Card do not appears.

Posted by [danielcornelius](#) on Tue, 26 Jun 2012 15:28:56 GMT

[View Forum Message](#) <> [Reply to Message](#)

---

]I connect one 8 Channel Outputcard to second slot of Paris MEC. In which way should it appears in patchbay window ?

I can`t find it there !?

I have an 8 channel Inputcard too. Maybe is it automatically in this Input Interface MEC Modules A connected ? Or Maybe if second slot(B) trouves a card it appears at patchbay window as MEC Modules-B ?

Actually Screenshot of my patch where at first Slot installed 8 Channel Input Card and second slot installed 8 Channel Output card:

The Backside of my MEC Module :

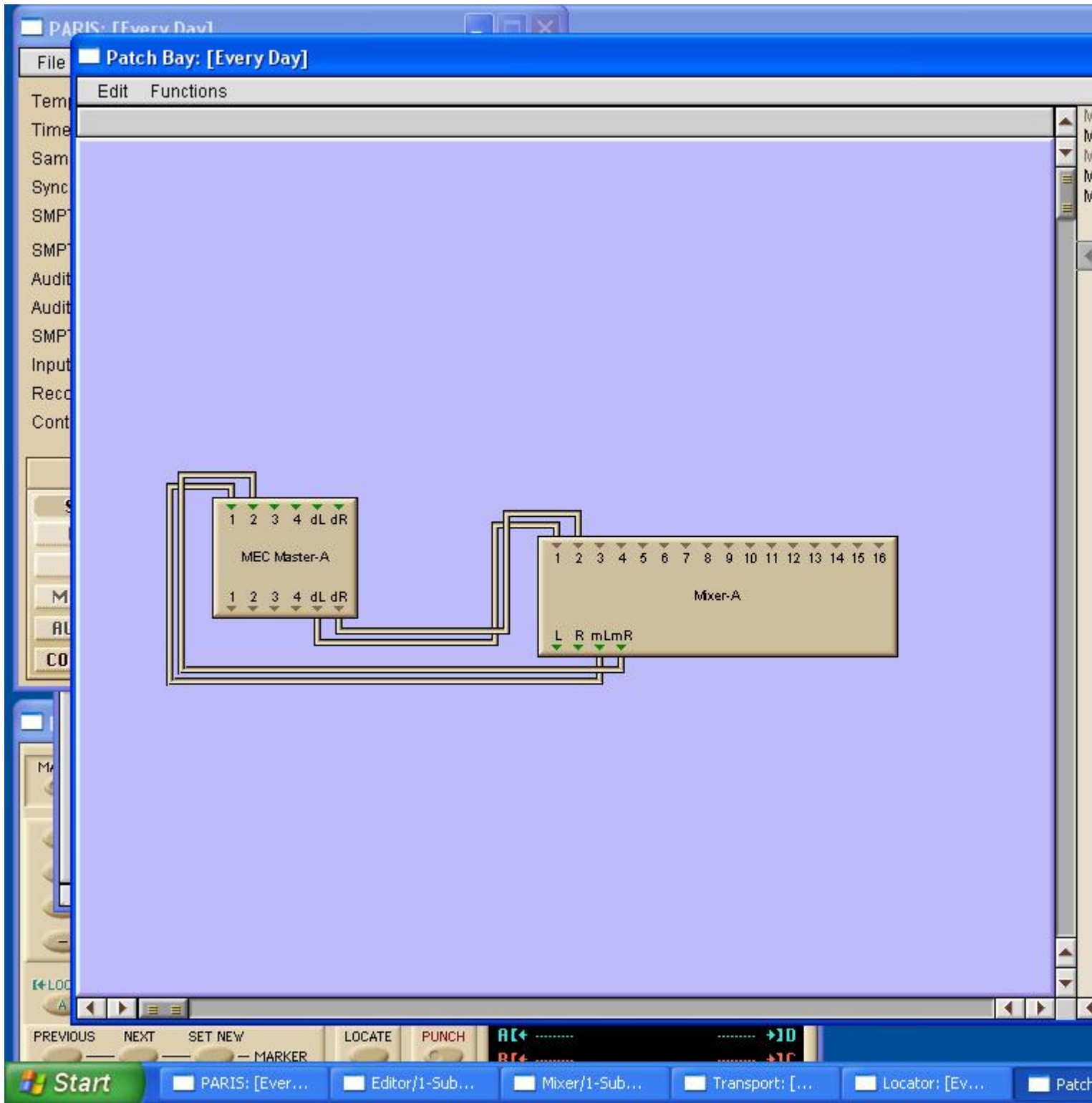
Sorry for bad English hope you can understand and help me.  
THX!

---

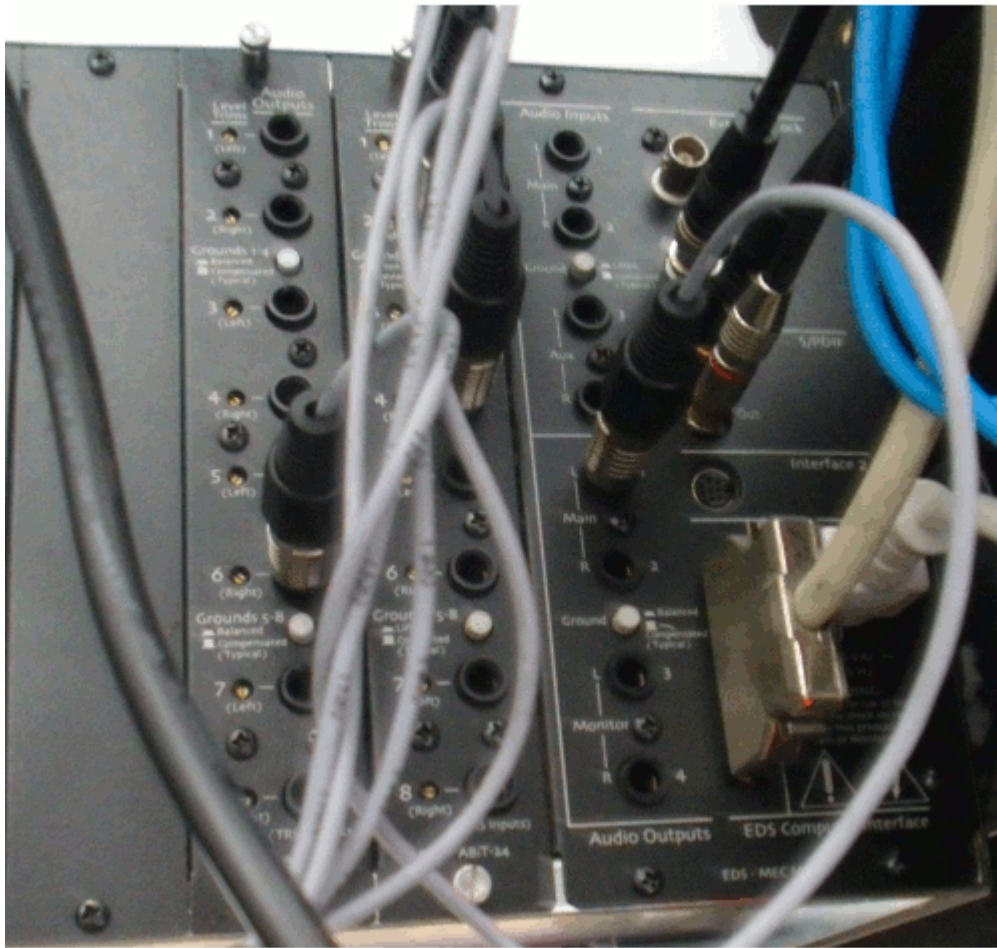
### File Attachments

1) [patcgbay\\_window.JPG](#), downloaded 362 times

---



2) [MEC\\_Backside.gif](#), downloaded 318 times



---

Subject: Re: 8 Output Card do not appears.  
Posted by [Wayne](#) on Tue, 26 Jun 2012 20:31:38 GMT  
[View Forum Message](#) <> [Reply to Message](#)

Hi Dan,

See the MEC-Modules A 16/16. 8 of those are you input and 8 are your outputs.

Drag that module into the patch bay. Double click it. It will open up the module and you'll see both.

Wayne

---

Subject: Re: 8 Output Card do not appears.  
Posted by [danielcornelius](#) on Wed, 27 Jun 2012 14:15:13 GMT  
[View Forum Message](#) <> [Reply to Message](#)

Hi Thx for fast reponse !  
I did see the card now !

Can you tell me in wich way connecting and routing a Hardwarecompressor with both cards. I got a Setup of Microphonepreamp Universal Audio 4-710D. As Compressor I use a 1176 AE from UA.

The 4-710D goes into Toslink/adat by RME Soundcard into Paris 442 Module SPDIF.  
I don't know the right routing into Paris Patchbay to use this Hardwarecompressor after Record.  
I'd like to record clean sound and after record i like for example to compress or something like that with hardware.

---

Subject: Re: 8 Output Card do not appears.  
Posted by [Wayne](#) on Wed, 27 Jun 2012 15:31:38 GMT  
[View Forum Message](#) <> [Reply to Message](#)

I haven't done any patching out to hardware loops so I'm no help here.

---

Subject: Re: 8 Output Card do not appears.  
Posted by [danielcornelius](#) on Wed, 27 Jun 2012 16:17:13 GMT  
[View Forum Message](#) <> [Reply to Message](#)

THX no Problem, i try this first, looking for it all the day and hope will working well !

<http://fanera-minus.narod.ru/paris/faq/faq.htm>

I will response later if it works, to be a good part of a good community!

->Edit<-

I dont like to write another message. Go to postet link at the Top of message. You can find at point 22 a working answear of this thread. If there any problems u can send PM to me ;-)->Edit<-

---

Subject: Re: 8 Output Card do not appears.  
Posted by [danielcornelius](#) on Sat, 12 Apr 2014 19:04:57 GMT  
[View Forum Message](#) <> [Reply to Message](#)

Ok.

I haven't fix this problem these days. Cause I built a new Studio, with my good old Paris.

After renew my Vintagestudio i will try it again !

---