

---

Subject: UAD-1 / Paris issues

Posted by [mani1147](#) on Tue, 09 Mar 2010 15:28:27 GMT

[View Forum Message](#) <> [Reply to Message](#)

---

Hi Guys, I am having a hell of a time trying to get Paris 3.0 and my UAD-1 pci to play nice together. I have a 3 card mix of about 24 tracks total. The sys is my new i7 box, 4 gig ram, xp pro.

All tracks have been rendered, no cross-fades anywhere, I have 55% usage in UAD meter. After powering up the box, I can usually play the song start to end without problem, but on second playback, I get about halfway and the cursor start to jump around a little then playback stops and I get the paris streaming error followed by a UAD (err=21) error. (see screen grab)

I am suspecting an IRQ issue as my 3rd EDS is sharing IRQ 19 with the UAD but I have tried everything I can think of to change the IRQ allocation but the darn box is still greyed out in the device manager.

Could it be a Paris config issue (paris.cfg), here is my current config.

```
-----
*****
*** PARIS Configuration ***
*****
*** ENGINE configuration parameters ***
* Cache Size in MB
CacheSize=172

* Overview cache size in KB
OvwCacheSize=22000

* I/O configuration
IOSize=264

* SubMix Cache Size in KB
SubMixCacheSize=1024
```

```
ManualRecDelay=8192
MidiPlayDisabled=0
RecXFadeLen=20
Use32BitWinMTC=0
DisableDirectX=1
MasterOutputCard=0
ScrubMaxRate=1
WheelSensitivity=20
WheelInertia=68
CSProVersion=DEFGH
ScrubQuality=1
```

MIDIPlayDisabled=1  
VSTDirectory=C:\VSTParis\  
UndoLevelsSaved=10  
RedoLevelsSaved=10

---

Thanks in advance for any help.  
Rob\_A

### File Attachments

---

1) [uad error.JPG](#), downloaded 471 times

**Edit Functions Settings View Grid Go To**

**TOOLS** [Icons for various editing tools]

**SHOW/HIDE:** AUDIO BIPOL LR M TRAX FX [Icons for show/hide options]

**STREAMS** VOLUME PAN MUTE [Icons for stream controls]

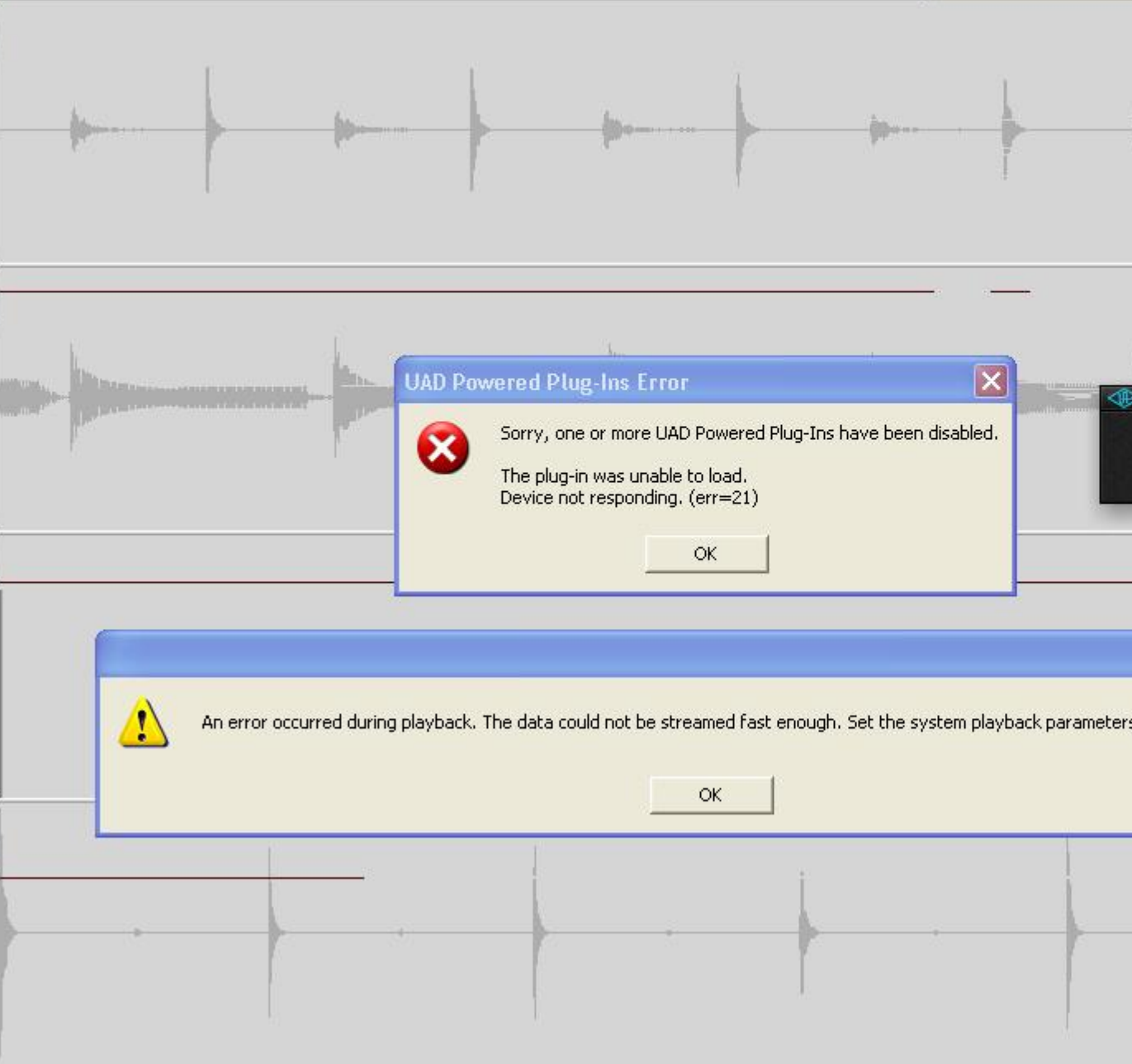
**INFORMATION** Cursor Position: 00:01:43.026 Cursor Value: -73.0 db Automation Value: -6.4 db

S M A E  
0.7

S M A E  
2.3

S M A E  
-6.4

S M A E  
-17.6



**UAD Powered Plug-Ins Error**

Sorry, one or more UAD Powered Plug-Ins have been disabled.  
The plug-in was unable to load.  
Device not responding. (err=21)

OK

An error occurred during playback. The data could not be streamed fast enough. Set the system playback parameters

OK